



Hazelwood Lane, Palmers Green, London, N13
Chain Free £475,000 Leasehold

Anthony Webb
ESTATE AGENTS

Hazelwood Lane, Palmers Green, London, N13

FANTASTIC LOCATION AND FLOOR SPACE.

A well presented two double bedroom, two bath/shower room apartment located on the third floor of this private modern gated purpose built development. This CHAIN FREE property was built in 2008 and offers an impressive and larger than average 997 sq. ft. of bright and airy floor space.

Hazelwood Lane is located off Green Lanes and is a short walk to its wealth of shops, restaurants, bus routes, Broomfield Park and mainline station (Moorgate). Hazelwood primary school is also a short walk away.

The flat consists of a secure communal entrance with video entry phone system, a spacious living/dining area with wood floors opening to fitted kitchen with integrated appliances, water softener and granite work surfaces, utility cupboard, modern bathroom, modern en-suite shower room, double glazing, electric heating, communal gardens with own storage shed and secure gated parking space.

New lease of 125 years.

Service charges-£1200 p.a

Ground rent-£250 p.a

Enfield Council Tax Band D

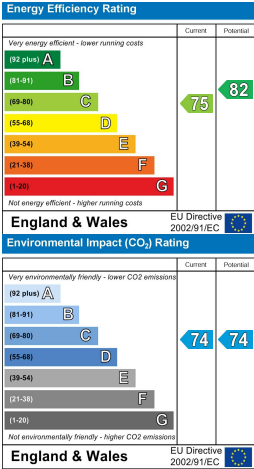
- Two double bedrooms
- Third floor apartment
- Spacious Living/dining space
- Modern fitted kitchen
- Two modern bath/shower rooms
- Double glazing/electric heating
- Communal gardens+storage shed
- Secure gated parking space



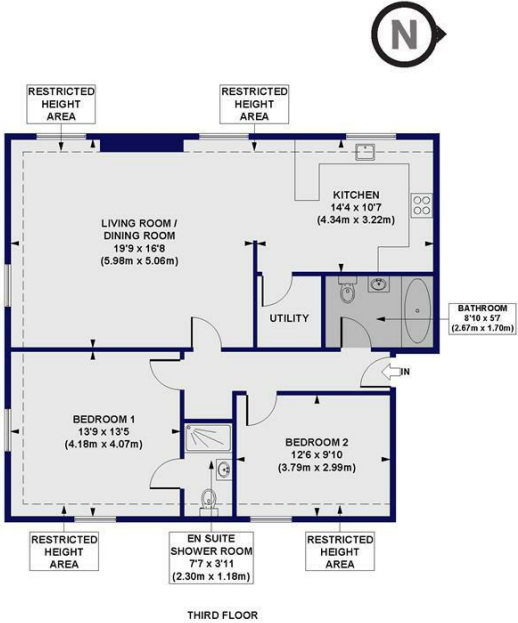


Hazelwood Lane
Palmers Green
London
N13 5EX

Tenure: Leasehold
Gross Internal Area: 1001.00 sq ft



Hazeltree Lodge, Hazelwood Lane, N13
Approx. Gross Internal Floor Area 997 sq. ft / 92.60 sq. m (Including Restricted Height Area)
Approx. Gross Internal Floor Area 905 sq. ft / 84.06 sq. m (Excluding Restricted Height Area)



All measurements of walls, doors, windows, fittings and appliances, including their size and location, are shown as standard sizes and do not constitute any warranty or representation by the seller, their agent or CP Creative. Any intending purchaser must satisfy himself by inspection or otherwise as to the correctness of the information contained in these plans.

Property particulars as supplied by Anthony Webb Estate Agents are set out as a general outline in accordance with the Property Misdescriptions Act (1991) only for the guidance of intending purchasers of lessees, and do not constitute any part of an offer or contract. Details are given without any responsibility, and any intending purchasers, lessees or third parties should not rely on them as inspection or otherwise as to the correctness of each of them. We have not carried out a structural survey and the services, appliances and specific fittings have not been tested. All photographs, measurements, floor plans and distances referred to are given as a guide only and should not be relied upon for the purchase of carpets or any other fixtures statements or representations of fact, but must satisfy themselves by or of fittings, gardens, roof terraces, balconies and communal gardens as well as tenure and lease details cannot have their accuracy guaranteed for intending purchasers. Lease details, service ground rent (where applicable) are given as a guide only and should be checked and confirmed by your solicitor prior to exchange of contracts. no person in the employment of Anthony Webb has any authority to make any representation or warranty whatever in relation to this property.

348 Green Lanes, Palmers Green, London N13 5TJ
020 8882 7888
palmersgreen@anthonywebb.co.uk
anthonywebb.co.uk

