



**Cosgrove Close, Winchmore Hill, London, N21**  
**Offers In Excess Of £275,000 Leasehold**

**Anthony Webb**  
ESTATE AGENTS



# Cosgrove Close, Winchmore Hill, London, N21

Ideal for first time buyers or buy to let investors. A well presented two bedroom, two reception, apartment located on the second floor of this 1988 built development with parking space and garage.

Cosgrove Close is located off Barrowell Green and is within easy walking distance of Winchmore Hill shops, restaurants, bus routes and mainline station into Moorgate. The property has a large green space nearby and is a short walk to Firs Lane Wetland park and public tennis courts. Highfield primary school and Winchmore secondary school are also within a short walk.

Secure communal entrance • Hallway with access to loft space • Living room with large skylight • Dining room • Fitted kitchen • Bathroom • One double bedroom • One single bedroom • Double glazing • Gas central heating • Garage with parking space in front • Communal gardens.

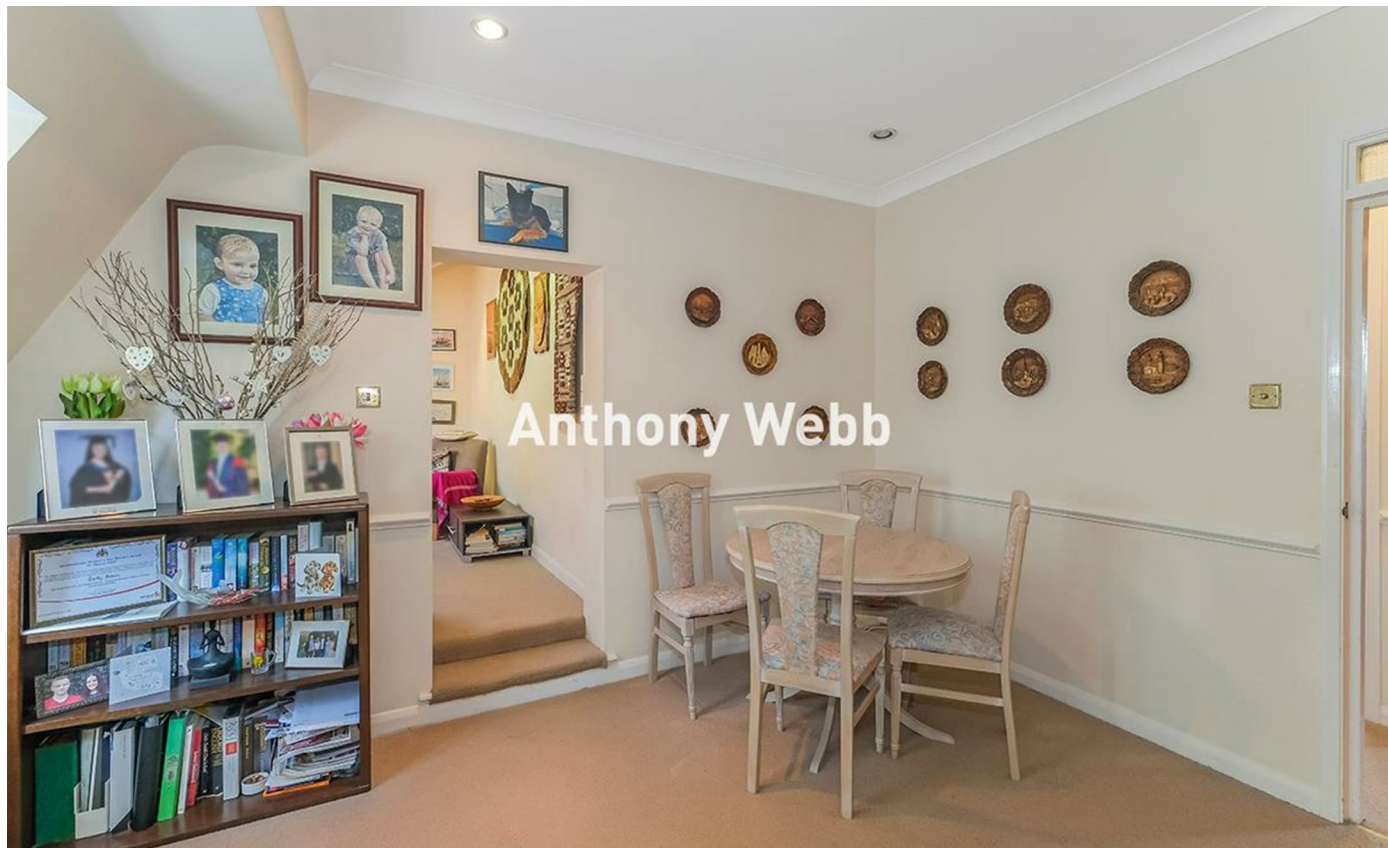
Lease remaining -87 years-lease extension quote is available.

Service charges-£1650 p.a

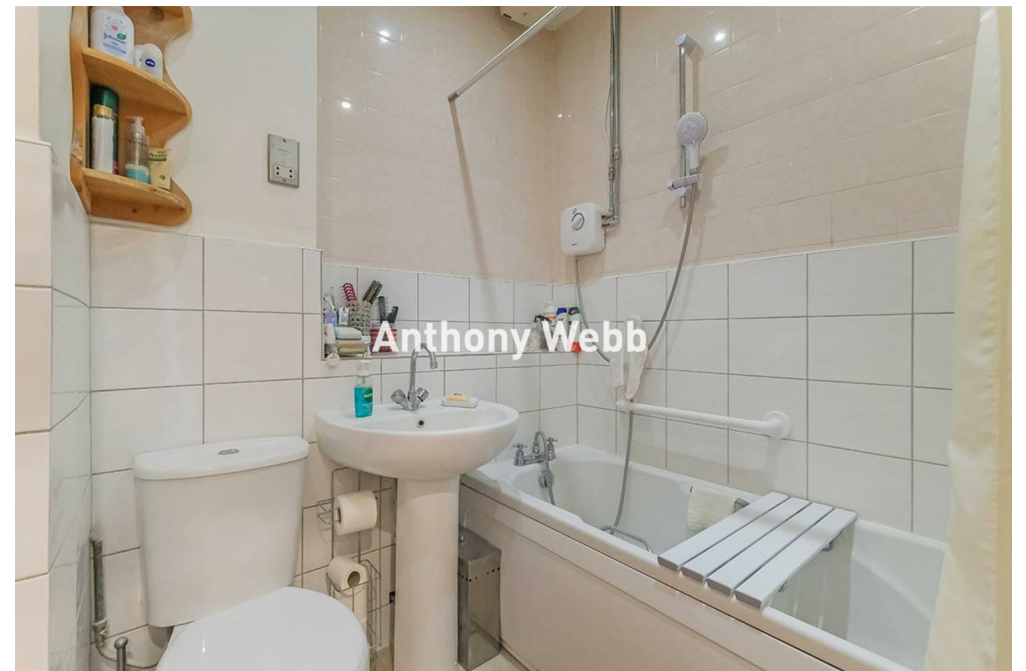
Ground rent-£120 p.a

Enfield Council Tax Band B

- Two bedrooms
- Second floor apartment
- Living room
- Dining room
- Bathroom
- Double glazing/gas central heating
- Secure communal entrance
- Garage and parking space

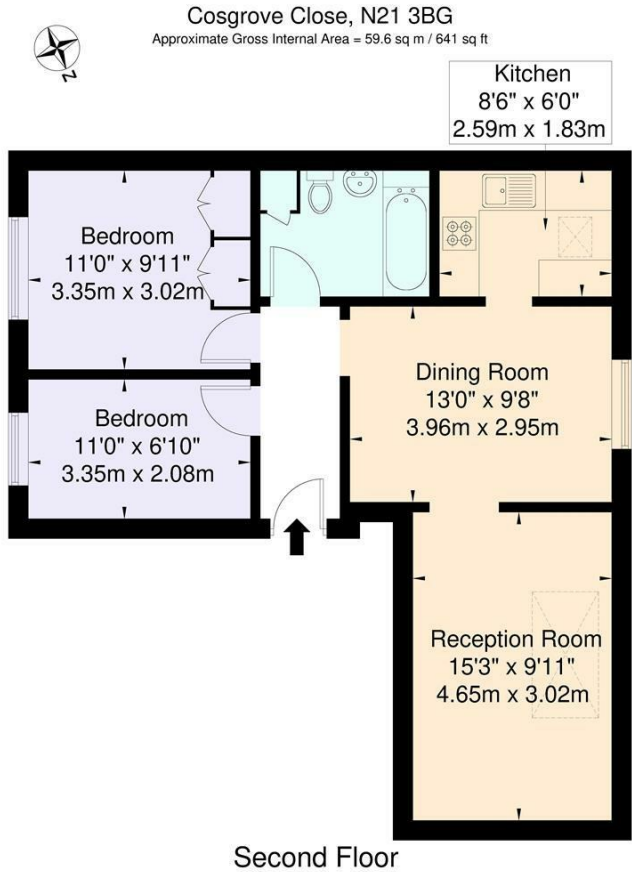
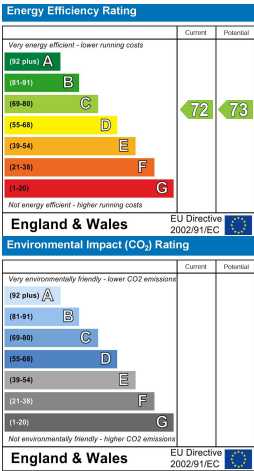






Cosgrove Close  
Winchmore Hill  
London  
N21 3BG

Tenure: Leasehold  
Gross Internal Area: 641.00 sq ft



Property particulars as supplied by Anthony Webb Estate Agents are set out as a general outline in accordance with the Property Misdescriptions Act (1991) only for the guidance of intending purchasers of lessees, and do not constitute any part of an offer or contract. Details are given without any responsibility, and any intending purchasers, lessees or third parties should not rely on them as inspection or otherwise as to the correctness of each of them. We have not carried out a structural survey and the services, appliances and specific fittings have not been tested. All photographs, measurements, floor plans and distances referred to are given as a guide only and should not be relied upon for the purchase of carpets or any other fixtures statements or representations of fact, but must satisfy themselves by or of fittings, gardens, roof terraces, balconies and communal gardens as well as tenure and lease details cannot have their accuracy guaranteed for intending purchasers. Lease details, service ground rent (where applicable) are given as a guide only and should be checked and confirmed by your solicitor prior to exchange of contracts. no person in the employment of Anthony Webb has any authority to make any representation or warranty whatever in relation to this property.

348 Green Lanes, Palmers Green, London N13 5TJ  
020 8882 7888  
palmersgreen@anthonywebb.co.uk  
anthonywebb.co.uk

