



Grovelands Road, Palmers Green, London, N13  
£1,250,000 Freehold



# Grovelands Road, Palmers Green, London, N13

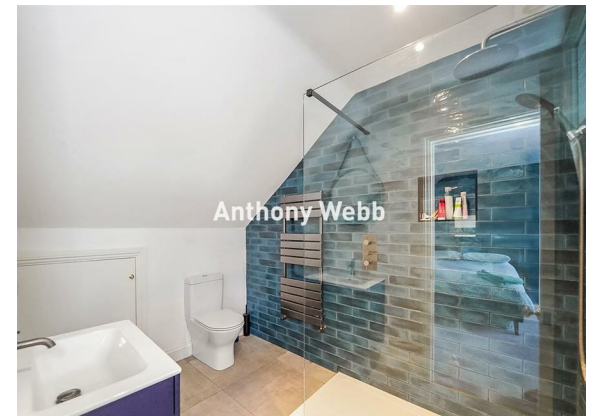
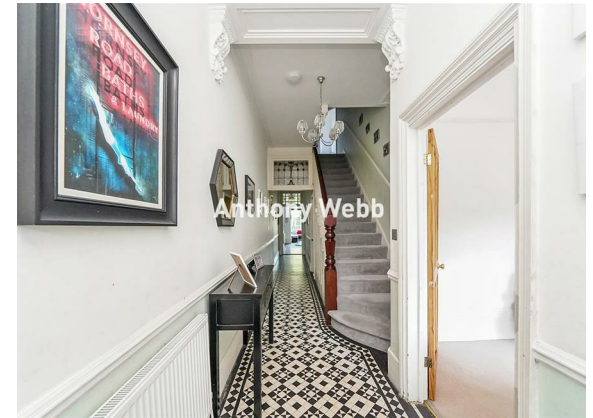
Beautifully presented six bedroom, three bath/shower room Edwardian semi detached house located in the desirable Lakes Estate conservation area offering an impressive 2851 sq ft of well appointed living space over three floors. The property has been extended and refurbished by the current vendors to create a wonderful family home.

Grovelands Road is located between Fox Lane and Aldermans Hill and is within easy walking distance of Palmers Greens shops, restaurants, bus routes and mainline station into Moorgate. Southgate underground station is also a short bus ride away via the W6 bus route. Both Broomfield Park and Grovelands Park are also within easy reach.

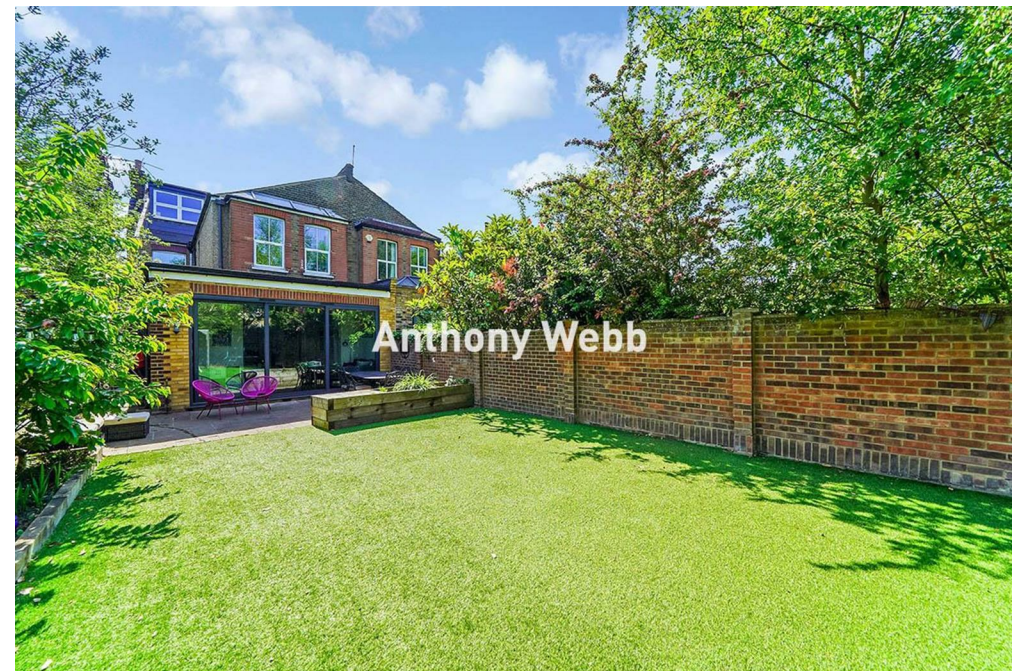
Original storm porch and stained glass front doors • Hallway with original tessellated tiled floor • Front reception with large bay window and feature fireplace • Second reception • Office • Open plan kitchen/diner with extended sitting space opening to rear garden via bi-folding doors • Modern fitted kitchen with breakfast bar • Utility room • Ground floor shower room • The first floor offers a spacious landing with five original bedrooms and a family bathroom • The converted loft space offers a generous principle bedroom with en-suite shower room and plenty of eaves storage space • Off street parking • Private and well maintained rear garden.

Enfield Council Tax Band G

- Six bedrooms
- Edwardian semi-detached house
- Two receptions+office
- Extended modern kitchen/diner
- Three bath/shower rooms
- Many period features
- Off street parking
- West facing rear garden



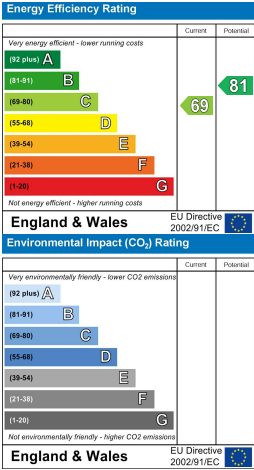






Grovelands Road  
Palmers Green  
London  
N13 4RJ

Tenure: Freehold  
Gross Internal Area: 2851.00 sq ft



Grovelands Road, N13 4RJ  
Approximate Gross Internal Area = 264.9 sq m / 2851 sq ft



For Illustration Purposes Only - Not To Scale  
This floor plan should be used as a general outline for guidance only and does not constitute in whole or in part an offer or contract. Any intending purchaser or lessee should satisfy themselves by inspection, enquiries and full survey as to the correctness of each statement. Any areas, measurements or distances quoted are approximate and should not be used to value a property or be the basis of any sale or let.

Property particulars as supplied by Anthony Webb Estate Agents are set out as a general outline in accordance with the Property Misdescriptions Act (1991) only for the guidance of intending purchasers of lessees, and do not constitute any part of an offer or contract. Details are given without any responsibility, and any intending purchasers, lessees or third parties should not rely on them as inspection or otherwise as to the correctness of each of them. We have not carried out a structural survey and the services, appliances and specific fittings have not been tested. All photographs, measurements, floor plans and distances referred to are given as a guide only and should not be relied upon for the purchase of carpets or any other fixtures statements or representations of fact, but must satisfy themselves by or of fittings, gardens, roof terraces, balconies and communal gardens as well as tenure and lease details cannot have their accuracy guaranteed for intending purchasers. Lease details, service ground rent (where applicable) are given as a guide only and should be checked and confirmed by your solicitor prior to exchange of contracts. no person in the employment of Anthony Webb has any authority to make any representation or warranty whatever in relation to this property.

348 Green Lanes, Palmers Green, London N13 5TJ  
020 8882 7888  
palmersgreen@anthonywebb.co.uk  
anthonywebb.co.uk

