

TO LET



Lodge Drive, Palmers Green, London, N13
£1,300 Per Calendar Month

Anthony Webb
ESTATE AGENTS

Lodge Drive, Palmers Green, London, N13

GREAT LOCATION IN THE HEART OF PALMERS GREEN.

Split level FURNISHED one bedroom flat situated over the first and second floors of this Edwardian building a few minutes' walk to Palmers Green's shops, restaurants and mainline station (Moorgate).

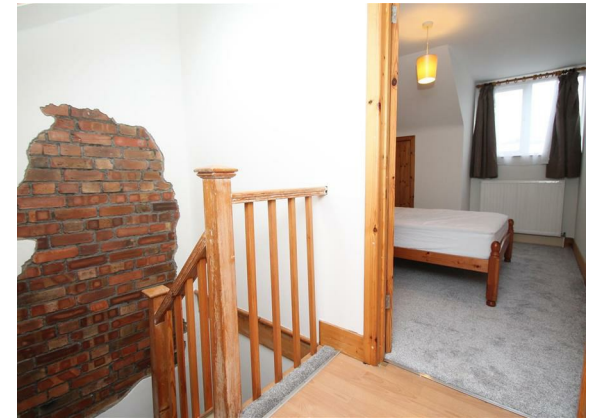
The flat which has been decorated throughout with new carpets consists of a bathroom on the 1st floor. The second floor offers a living/kitchen area with breakfast bar and laminate floor, a double bedroom with carpet, eaves storage space, gas central heating, double glazing and a secure communal front door with entry phone system.

Enfield Council Band C

5 weeks deposit £1,500.00

Minimum annual household income to meet referencing criteria £39,000

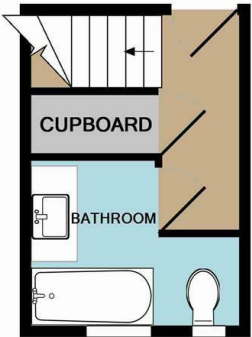
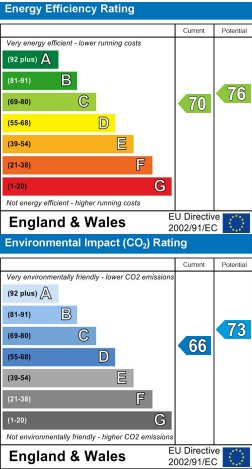
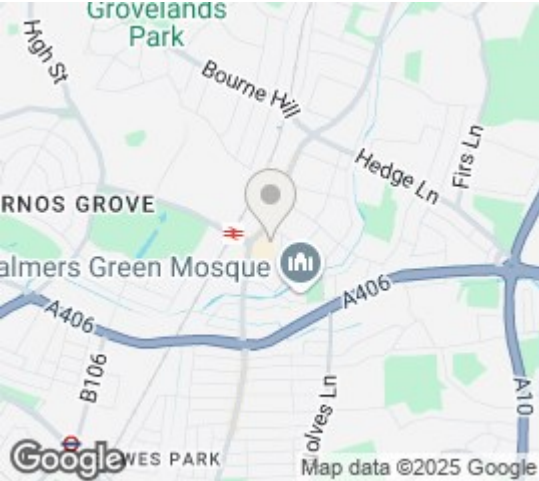
- Split level 1st & 2nd floor flat
- One double bedroom
- Living/kitchen area
- Bathroom
- Offered furnished
- Double glazing/gas central heating
- Newly decorated
- Close to shops/buses/station



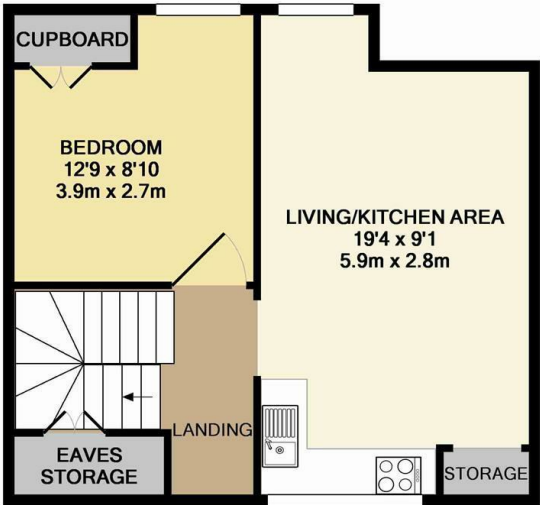


Lodge Drive
Palmers Green
London
N13 5LB

Tenure:
Gross Internal Area: 431.00 sq ft



1ST FLOOR



2ND FLOOR

TOTAL APPROX. FLOOR AREA 431 SQ.FT. (40.0 SQ.M.)

Whilst every attempt has been made to ensure the accuracy of the floor plan contained here, measurements of doors, windows, rooms and any other items are approximate and no responsibility is taken for any error, omission, or mis-statement. This plan is for illustrative purposes only and should be used as such by any prospective purchaser. The services, systems and appliances shown have not been tested and no guarantee as to their operability or efficiency can be given
Made with Metropix ©2014

Property particulars as supplied by Anthony Webb Estate Agents are set out as a general outline in accordance with the Property Misdescriptions Act (1991) only for the guidance of intending purchasers of lessees, and do not constitute any part of an offer or contract. Details are given without any responsibility, and any intending purchasers, lessees or third parties should not rely on them as inspection or otherwise as to the correctness of each of them. We have not carried out a structural survey and the services, appliances and specific fittings have not been tested. All photographs, measurements, floor plans and distances referred to are given as a guide only and should not be relied upon for the purchase of carpets or any other fixtures statements or representations of fact, but must satisfy themselves by or of fittings, gardens, roof terraces, balconies and communal gardens as well as tenure and lease details cannot have their accuracy guaranteed for intending purchasers. Lease details, service ground rent (where applicable) are given as a guide only and should be checked and confirmed by your solicitor prior to exchange of contracts. no person in the employment of Anthony Webb has any authority to make any representation or warranty whatever in relation to this property.

348 Green Lanes, Palmers Green, London N13 5TJ
020 8882 7888
palmersgreen@anthonywebb.co.uk
anthonywebb.co.uk

