

TO LET



Bayswater Close, Palmers Green, London, N13
£1,400 Per Calendar Month

Anthony Webb
ESTATE AGENTS

Bayswater Close, Palmers Green, London, N13

A beautifully presented FURNISHED one bedroom first floor modern apartment with a spacious open plan living/ kitchen space, modern shower room, secure communal entrance and an allocated parking space.

Bayswater Close is a quiet gated development built in 2012 located off New River Crescent and ideally located for Palmers Greens shops, restaurants, bus routes and mainline station into Moorgate. The New River and Hazelwood recreation ground area are a short walk away.

Benefits include Lift to all floors • Secure communal entrance with entry phone system • Open plan living/kitchen space with bay window • Modern fitted kitchen with quartz work surface • Modern shower room • Double bedroom with fitted wardrobe • Large storage/utility cupboard • Double glazing • Gas central heating • Allocated parking space.

Enfield Council tax band E

5 weeks deposit £1,615.00

Minimum annual household income to meet referencing criteria £42,000

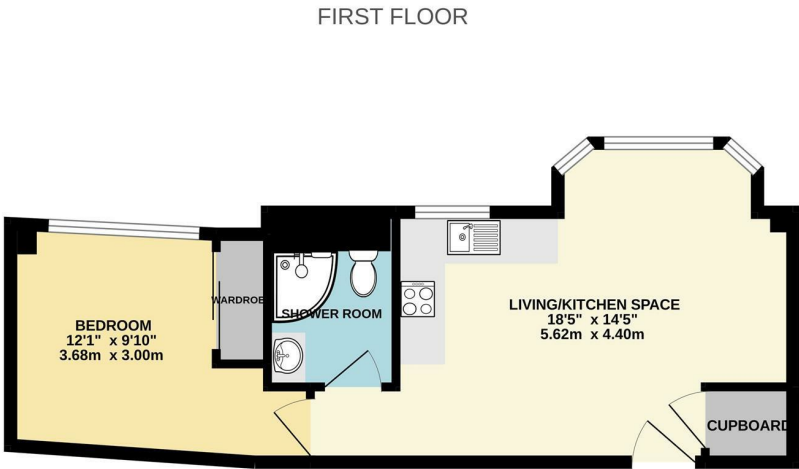
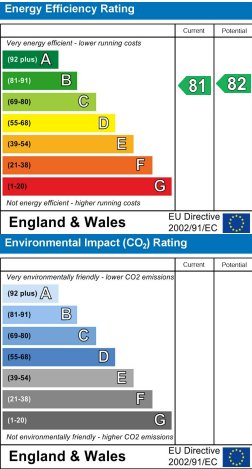
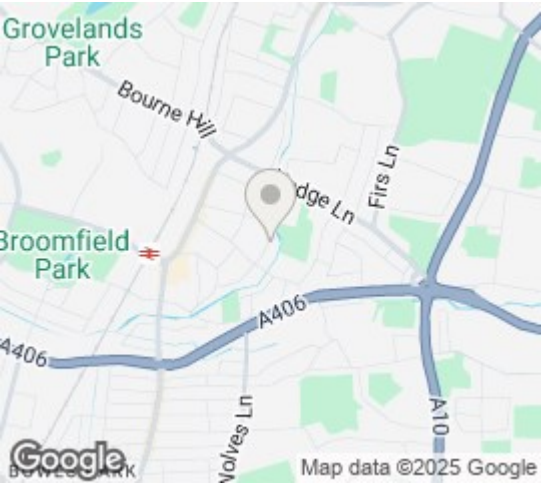
- One bedroom
- First floor apartment
- Modern gated development
- Open plan living/kitchen space
- Modern shower room
- Double glazing/gas central heating
- Secure communal entrance
- Allocated parking space





Bayswater Close
Palmers Green
London
N13 5BF

Tenure:
Gross Internal Area: 431.00 sq ft



TOTAL FLOOR AREA: 431sq.ft. (40.0 sq.m.) approx.
Whilst every attempt has been made to ensure the accuracy of the floorplan contained here, measurements of doors, windows, rooms and any other items are approximate and no responsibility is taken for any error, omission or mis-statement. This plan is for illustrative purposes only and should be used as such by any prospective purchaser. The services, systems and appliances shown have not been tested and no guarantee as to their operability or efficiency can be given.
Made with Metaphor 10/2022

Property particulars as supplied by Anthony Webb Estate Agents are set out as a general outline in accordance with the Property Misdescriptions Act (1991) only for the guidance of intending purchasers of lessees, and do not constitute any part of an offer or contract. Details are given without any responsibility, and any intending purchasers, lessees or third parties should not rely on them as inspection or otherwise as to the correctness of each of them. We have not carried out a structural survey and the services, appliances and specific fittings have not been tested. All photographs, measurements, floor plans and distances referred to are given as a guide only and should not be relied upon for the purchase of carpets or any other fixtures statements or representations of fact, but must satisfy themselves by or of fittings, gardens, roof terraces, balconies and communal gardens as well as tenure and lease details cannot have their accuracy guaranteed for intending purchasers. Lease details, service ground rent (where applicable) are given as a guide only and should be checked and confirmed by your solicitor prior to exchange of contracts. no person in the employment of Anthony Webb has any authority to make any representation or warranty whatever in relation to this property.

348 Green Lanes, Palms Green, London N13 5TJ
020 8882 7888
palmsgreen@anthonywebb.co.uk
anthonywebb.co.uk

