

A bright, spacious living room with a large bay window on the left, featuring white frames and cream-colored curtains. A black leather sofa is positioned in the foreground on the left. In the center, a large black television sits on a stand. To the right, a white fireplace with a black interior is flanked by a black glass coffee table and a wooden sideboard. A black leather sofa is also on the right, with a floral patterned cushion. The room has light-colored walls, a white ceiling with a chandelier, and a wooden floor. A clock and a small framed picture are on the wall above the fireplace. A potted plant sits on a small table near the window.

Hamilton Crescent, Palmers Green, London, N13
£2,500 Per Calendar Month

Anthony Webb
ESTATE AGENTS

Hamilton Crescent, Palmers Green, London, N13
£2,500 Per Calendar Month

Anthony Webb
ESTATE AGENTS

Hamilton Crescent, Palmers Green, London, N13

FOUR BED, TWO BATH/SHOWER ROOM HOUSE TO LET IN N13.

A well presented and extended end of terrace house located in this most popular residential turning close to Palmers Greens shops, restaurants, bus routes and mainline station into Moorgate. Both Wood Green and Southgate tube stations are a short bus ride away.

The property consists on the ground floor of a spacious through lounge with wood floors, an extended kitchen/diner with doors to garden and a ground floor shower room. The first floor offers two good size double bedrooms, a single bedroom and a bathroom. There is another double bedroom in the converted loft space. Further benefits include double glazing, gas central heating, a summer house/gym, off street parking and a well maintained rear garden. The property is offered PART FURNISHED and Available 5th of July .

Enfield Council Band E

5 weeks deposit £2,884.00

Minimum annual household income to meet referencing criteria £75,000

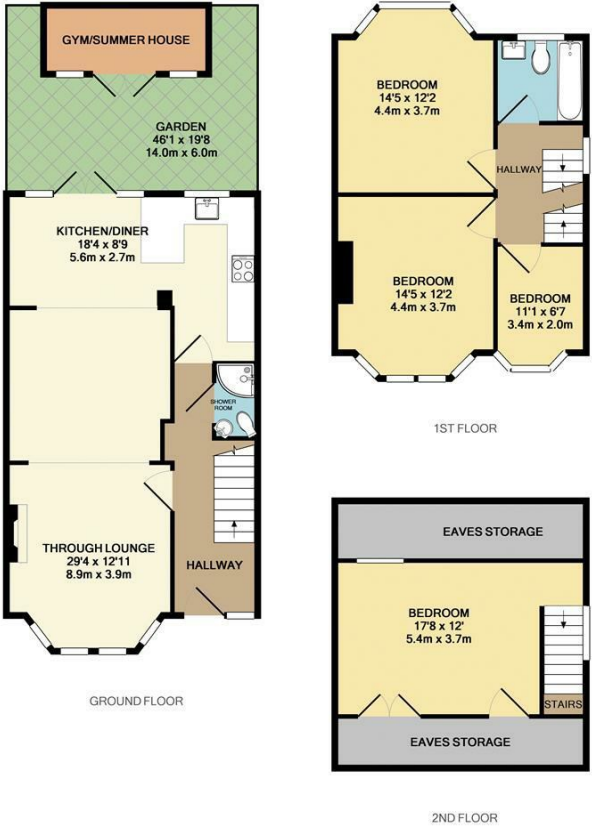
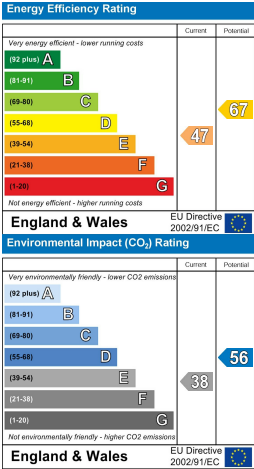
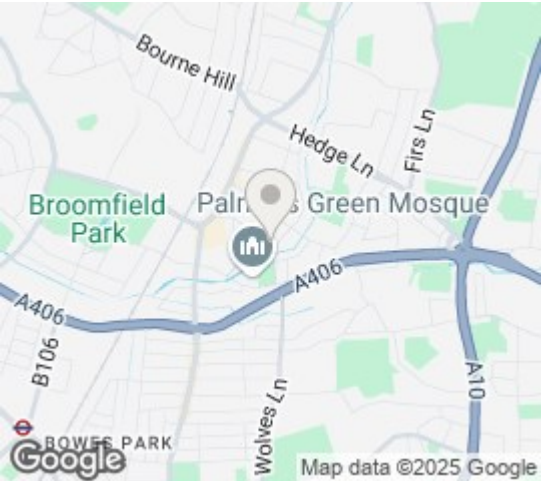
- Four bedrooms
- End of terrace house
- Spacious through lounge
- Extended kitchen/diner
- Two bath/shower rooms
- Popular location
- Off street parking
- Rear garden





Hamilton Crescent
Palmers Green
London
N13 5LN

Tenure:
Gross Internal Area: 1399.00 sq ft



Property particulars as supplied by Anthony Webb Estate Agents are set out as a general outline in accordance with the Property Misdescriptions Act (1991) only for the guidance of intending purchasers of lessees, and do not constitute any part of an offer or contract. Details are given without any responsibility, and any intending purchasers, lessees or third parties should not rely on them as inspection or otherwise as to the correctness of each of them. We have not carried out a structural survey and the services, appliances and specific fittings have not been tested. All photographs, measurements, floor plans and distances referred to are given as a guide only and should not be relied upon for the purchase of carpets or any other fixtures statements or representations of fact, but must satisfy themselves by or of fittings, gardens, roof terraces, balconies and communal gardens as well as tenure and lease details cannot have their accuracy guaranteed for intending purchasers. Lease details, service ground rent (where applicable) are given as a guide only and should be checked and confirmed by your solicitor prior to exchange of contracts. no person in the employment of Anthony Webb has any authority to make any representation or warranty whatever in relation to this property.

348 Green Lanes, Palmer's Green, London N13 5TJ
020 8882 7888
palmersgreen@anthonywebb.co.uk
anthonywebb.co.uk

