



New River Crescent, Palmers Green, London, N13
Chain Free £419,995 Leasehold

Anthony Webb
ESTATE AGENTS

New River Crescent, Palmers Green, London, N13

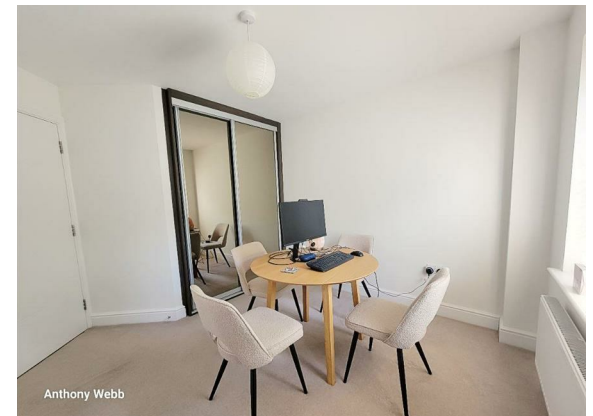
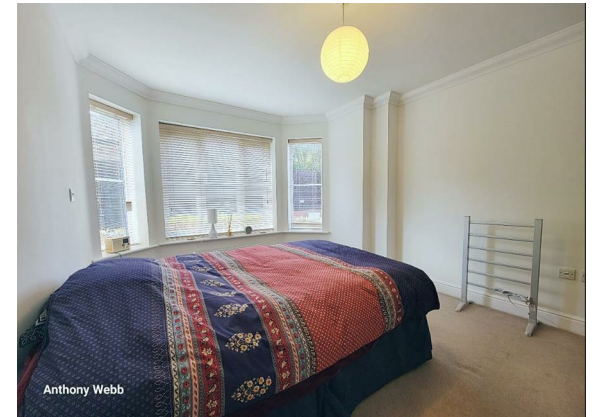
A modern and well presented two bedroom, two bath/shower room ground floor apartment offering close to 800sq ft of bright and airy living space with own private garden looking onto the New River.

Bayswater Close is a quiet gated development built in 2012 located off New River Crescent and ideally located for Palmers Greens shops, restaurants, bus routes and mainline station into Moorgate. The New River and Hazelwood recreation ground area are a short walk away.

Secure communal entrance with video entry phone system • Good size hallway • Spacious open plan living/dining room with door to garden • Modern fitted kitchen with quartz work surface and integrated appliances • Modern bathroom • Main bedroom with bay window and en-suite shower room • Second double bedroom • Double glazing • Gas central heating • Allocated parking space.

111 years lease remaining
Service charge £3066 p.a
Ground rent £277.85
Ground rent review in 2032
Enfield Council tax band D

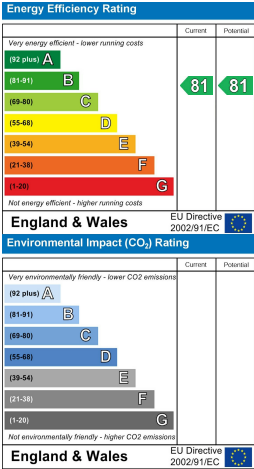
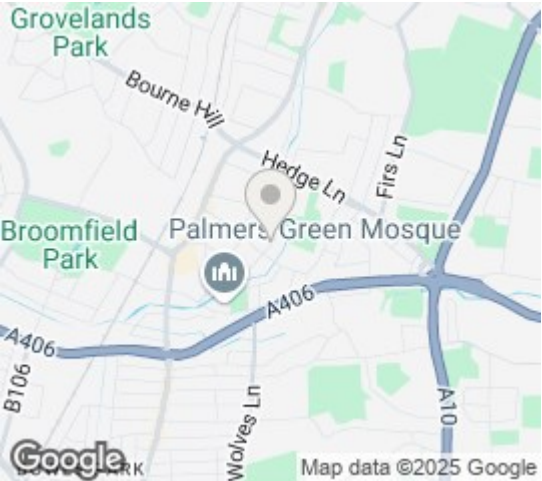
- Two bedrooms
- Ground floor apartment
- Spacious living room
- Modern fitted kitchen
- Two bath/shower rooms
- Double glazing/gas central heating
- Allocated parking space
- Own private rear garden
- Secure communal entrance
- Within gated development





New River Crescent
Palmers Green
London
N13 5BF

Tenure: Leasehold
Gross Internal Area: 786.00 sq ft



Property particulars as supplied by Anthony Webb Estate Agents are set out as a general outline in accordance with the Property Misdescriptions Act (1991) only for the guidance of intending purchasers of lessees, and do not constitute any part of an offer or contract. Details are given without any responsibility, and any intending purchasers, lessees or third parties should not rely on them as inspection or otherwise as to the correctness of each of them. We have not carried out a structural survey and the services, appliances and specific fittings have not been tested. All photographs, measurements, floor plans and distances referred to are given as a guide only and should not be relied upon for the purchase of carpets or any other fixtures statements or representations of fact, but must satisfy themselves by or of fittings, gardens, roof terraces, balconies and communal gardens as well as tenure and lease details cannot have their accuracy guaranteed for intending purchasers. Lease details, service ground rent (where applicable) are given as a guide only and should be checked and confirmed by your solicitor prior to exchange of contracts. no person in the employment of Anthony Webb has any authority to make any representation or warranty whatever in relation to this property.

348 Green Lanes, Palmers Green, London N13 5TJ
020 8882 7888
palmersgreen@anthonywebb.co.uk
anthonywebb.co.uk

