



Connaught Gardens, Palmers Green, London, N13
Chain Free £635,000 Freehold

Anthony Webb
ESTATE AGENTS

Connaught Gardens, Palmers Green, London, N13

A chain free and well presented 1930s built three bedroom end of terrace house located in a popular residential turning off Hazelwood Lane.

The property is ideally located for Palmers Greens shops, restaurants and mainline station into Moorgate. Bounds Green and Wood Green tube stations are also within easy reach via bus. The A10 and A406 provide excellent road links into London and beyond.

The accommodation consists of a good size hallway, a bright and spacious 30ft through lounge, a modern fitted kitchen, modern shower room, two double bedrooms, one good size single bedroom and loft space with potential to convert. Further benefits include double glazing, gas central heating, external utility room with a w.c and plumbing for washing machine, garage to rear, paved parking to front and rear garden. The property is also within a few minutes walk of the Hazelwood recreation ground, the New River and the ever popular Hazelwood primary school.

Enfield council tax band E

- Three bedrooms
- 1930s built end of terrace house
- Through Lounge
- Fitted kitchen
- Modern shower room
- Double glazing/gas central heating
- Off street parking/garage to rear
- Rear garden

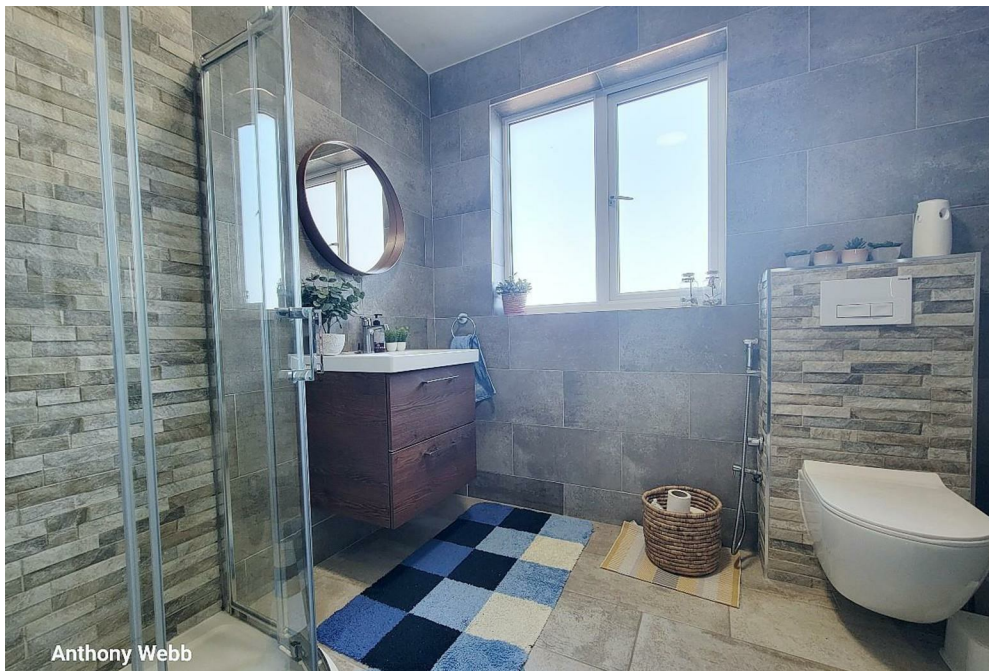




Anthony Webb



Anthony Webb



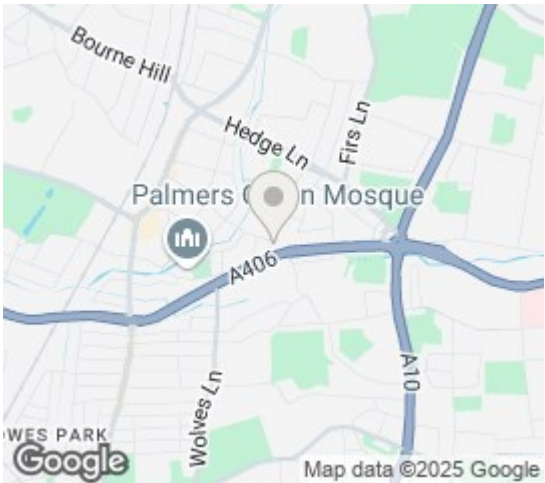
Anthony Webb



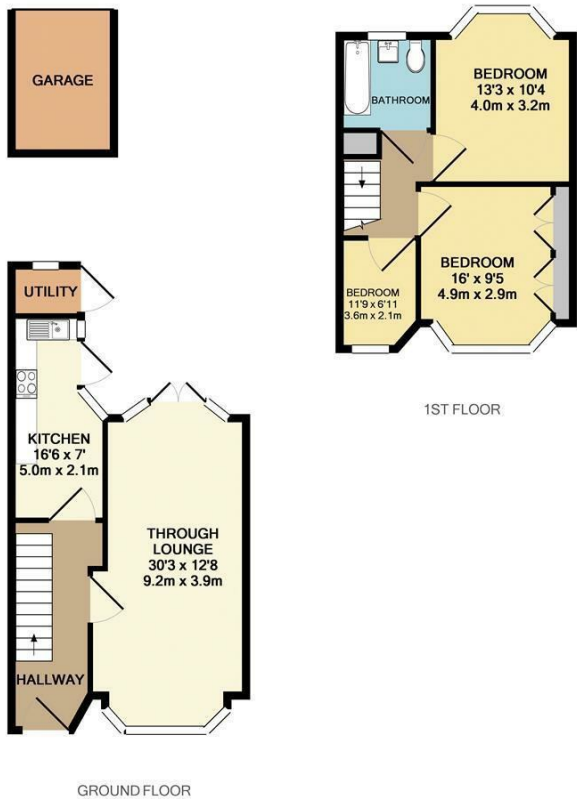
Anthony Webb

Connaught Gardens
Palmers Green
London
N13 5BP

Tenure: Freehold
Gross Internal Area: 1076.00 sq ft



Energy Efficiency Rating		
	Current	Potential
Very energy efficient - lower running costs		
(92 plus) A		85
(81-91) B		
(69-80) C	71	
(55-68) D		
(39-54) E		
(21-38) F		
(1-20) G		
Not energy efficient - higher running costs		
England & Wales EU Directive 2002/91/EC		
Environmental Impact (CO ₂) Rating		
	Current	Potential
Very environmentally friendly - lower CO ₂ emissions		
(82 plus) A		
(61-81) B		
(39-60) C		
(15-38) D		
(1-14) E		
(1-14) F		
(1-14) G		
Not environmentally friendly - higher CO ₂ emissions		
England & Wales EU Directive 2002/91/EC		



TOTAL APPROX. FLOOR AREA 1076 SQ.FT. (100.0 SQ.M.)
Whilst every attempt has been made to ensure the accuracy of the floor plan contained here, measurements of doors, windows, rooms and any other items are approximate and no responsibility is taken for any error, omission, or mis-statement. This plan is for illustrative purposes only and should be used as such by any prospective purchaser. The services, systems and appliances shown have not been tested and no guarantee as to their operability or efficiency can be given.
Made with Metropix ©2018

Property particulars as supplied by Anthony Webb Estate Agents are set out as a general outline in accordance with the Property Misdescriptions Act (1991) only for the guidance of intending purchasers of lessees, and do not constitute any part of an offer or contract. Details are given without any responsibility, and any intending purchasers, lessees or third parties should not rely on them as inspection or otherwise as to the correctness of each of them. We have not carried out a structural survey and the services, appliances and specific fittings have not been tested. All photographs, measurements, floor plans and distances referred to are given as a guide only and should not be relied upon for the purchase of carpets or any other fixtures statements or representations of fact, but must satisfy themselves by or of fittings, gardens, roof terraces, balconies and communal gardens as well as tenure and lease details cannot have their accuracy guaranteed for intending purchasers. Lease details, service ground rent (where applicable) are given as a guide only and should be checked and confirmed by your solicitor prior to exchange of contracts. no person in the employment of Anthony Webb has any authority to make any representation or warranty whatever in relation to this property.

348 Green Lanes, Palmers Green, London N13 5TJ
020 8882 7888
palmersgreen@anthonywebb.co.uk
anthonywebb.co.uk

Anthony Webb
ESTATE AGENTS