



Kingsley Road, Palmers Green, London, N13  
£725,000 Freehold

**Anthony Webb**  
ESTATE AGENTS



# Kingsley Road, Palmers Green, London, N13

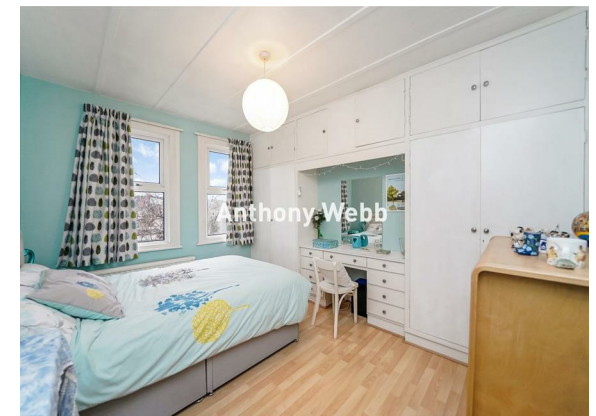
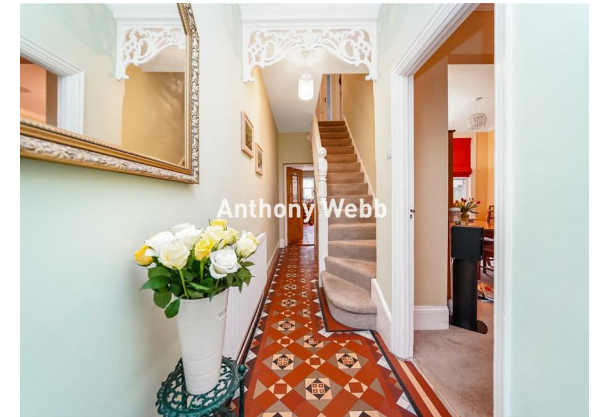
A well-presented three double bedroom Edwardian terrace house with beautiful original tiled hallway, through lounge, kitchen/diner and well-maintained rear garden. The property offers a generous 1,203 square feet of well-appointed living space and also offers great potential to extend to the rear/side and into the loft space.

Located between Hazelwood Lane and Park Avenue in the sought-after area of Palmers Green, residents will benefit from a vibrant community with excellent local amenities, including shops, restaurants, Broomfield Park, and popular schools including Hazelwood Primary and nursery. The property is also well-connected to public transport, making it easy to commute to central London and beyond via Palmers Green mainline station and various bus routes.

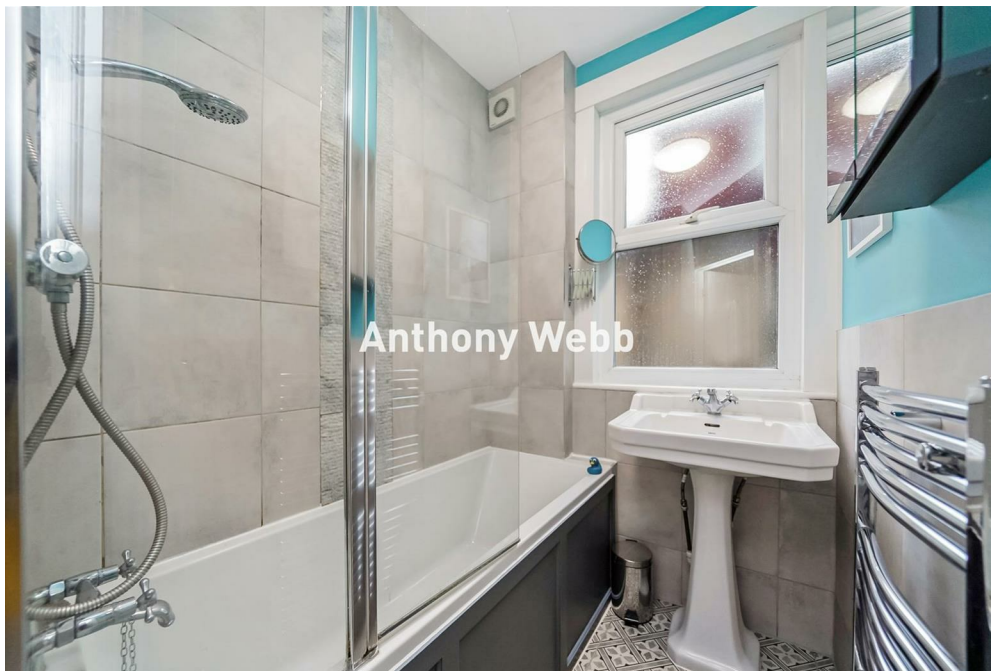
Original front garden wall and tiled path to front door • Hallway with original tessellated tiled floor and ceiling features • Spacious through lounge with bay window • Fitted kitchen/diner with door to side return and garden • First floor landing with access to loft space • Modern first floor family bathroom and separate w.c • Fitted wardrobes to all bedrooms • Double glazing • Gas central heating • South East facing rear garden measuring 82ft x 18ft mostly laid to lawn with mature shrubs/trees and potting shed to rear.

Enfield Council tax band E

- Three double bedrooms
- Edwardian terrace house
- Through Lounge
- Kitchen/diner
- Modern bathroom + separate w.c
- Double glazing/gas central heating
- Catchment for Hazelwood Primary School
- Front and rear gardens









Kingsley Road  
Palmers Green  
London  
N13 5PL

Tenure: Freehold  
Gross Internal Area: 1203.00 sq ft



Energy Efficiency Rating		
	Current	Potential
Very energy efficient - lower running costs		
(92 plus) <b>A</b>		<b>87</b>
(81-91) <b>B</b>		
(69-80) <b>C</b>	<b>69</b>	
(55-68) <b>D</b>		
(39-54) <b>E</b>		
(21-38) <b>F</b>		
(1-20) <b>G</b>		
Not energy efficient - higher running costs		
England & Wales EU Directive 2002/91/EC		
Environmental Impact (CO <sub>2</sub> ) Rating		
	Current	Potential
Very environmentally friendly - lower CO <sub>2</sub> emissions		
(82 plus) <b>A</b>		
(61-81) <b>B</b>		
(39-60) <b>C</b>		
(15-38) <b>D</b>		
(9-14) <b>E</b>		
(1-8) <b>F</b>		
(1-20) <b>G</b>		
Not environmentally friendly - higher CO <sub>2</sub> emissions		
England & Wales EU Directive 2002/91/EC		



Property particulars as supplied by Anthony Webb Estate Agents are set out as a general outline in accordance with the Property Misdescriptions Act (1991) only for the guidance of intending purchasers of lessees, and do not constitute any part of an offer or contract. Details are given without any responsibility, and any intending purchasers, lessees or third parties should not rely on them as inspection or otherwise as to the correctness of each of them. We have not carried out a structural survey and the services, appliances and specific fittings have not been tested. All photographs, measurements, floor plans and distances referred to are given as a guide only and should not be relied upon for the purchase of carpets or any other fixtures statements or representations of fact, but must satisfy themselves by or of fittings, gardens, roof terraces, balconies and communal gardens as well as tenure and lease details cannot have their accuracy guaranteed for intending purchasers. Lease details, service ground rent (where applicable) are given as a guide only and should be checked and confirmed by your solicitor prior to exchange of contracts. no person in the employment of Anthony Webb has any authority to make any representation or warranty whatever in relation to this property.

348 Green Lanes, Palmers Green, London N13 5TJ  
020 8882 7888  
palmersgreen@anthonywebb.co.uk  
anthonywebb.co.uk

Anthony Webb  
ESTATE AGENTS