



Hazelwood Lane, Palmers Green, London, N13  
£749,995 Freehold

**Anthony Webb**  
ESTATE AGENTS



# Hazelwood Lane, Palmers Green, London, N13

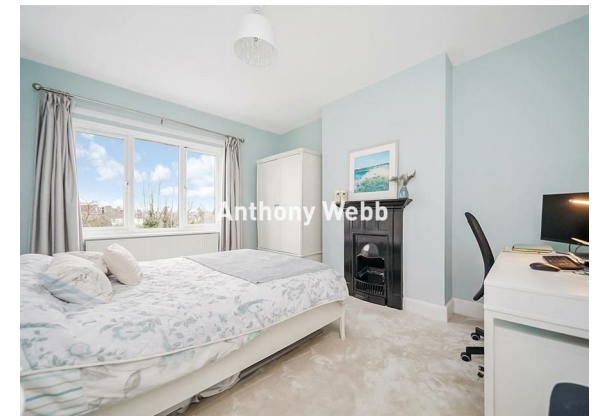
Stunning extended terrace house offering a perfect blend of period charm and modern convenience. Spanning an impressive 1,268 square feet, the property boasts three bedrooms, an extended kitchen diner and south facing rear garden making it an ideal family home.

Hazelwood lane is located off Green Lanes and is ideally located for Palmers Green's shops, restaurants, bus routes and mainline station into Moorgate. Hazelwood primary school, Broomfield Park, The New River and Hazelwood recreation ground area are also a short walk away.

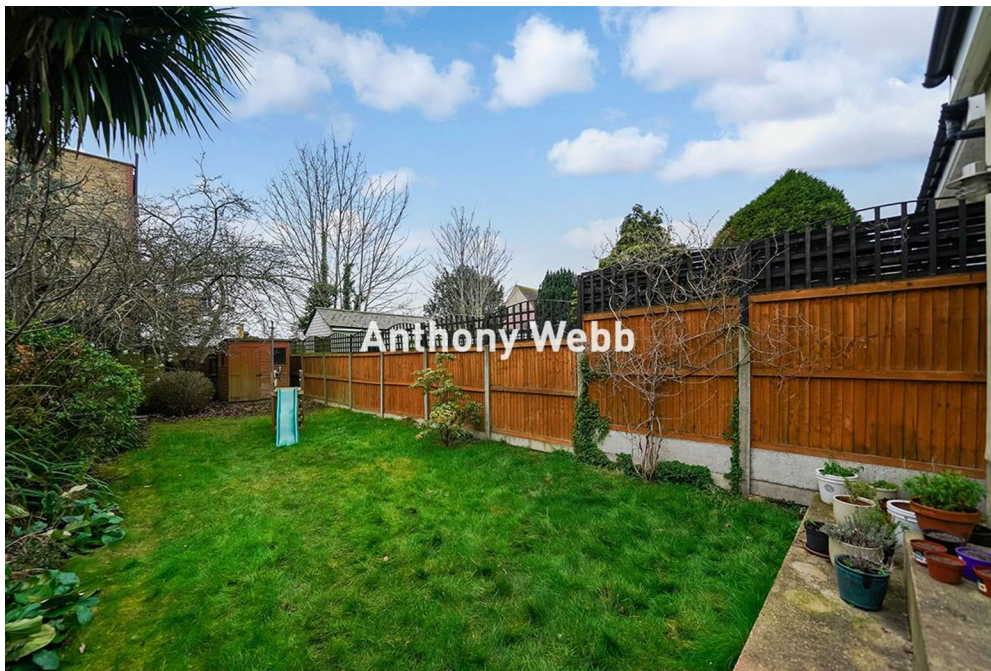
Front garden and path to front door • Hallway with tiled floor • Ground floor cloakroom • Spacious reception with feature fire surround and gas "log" burner • Extended open plan kitchen/dining/living space with bi-folding doors to garden • Modern fitted kitchen with breakfast bar and granite work surfaces • First floor landing with access to loft space which offers the potential to extend into • Beautiful family bathroom with roll top bath and separate shower cubicle • Two double bedrooms (one with fitted wardrobes) • Single third bedroom • Wood/tiled floors on ground floor • Gas central heating • Mostly double glazed • South facing rear garden measuring 55ft x 20ft.

Enfield Council Tax Band E

- Potential to convert loft space
- Three bedrooms
- Extended family home
- Living room
- Open plan modern kitchen/diner/living space
- Ground floor cloakroom
- Modern family bath/shower room
- Front and rear gardens
- Close to shops/station and Hazelwood Primary School



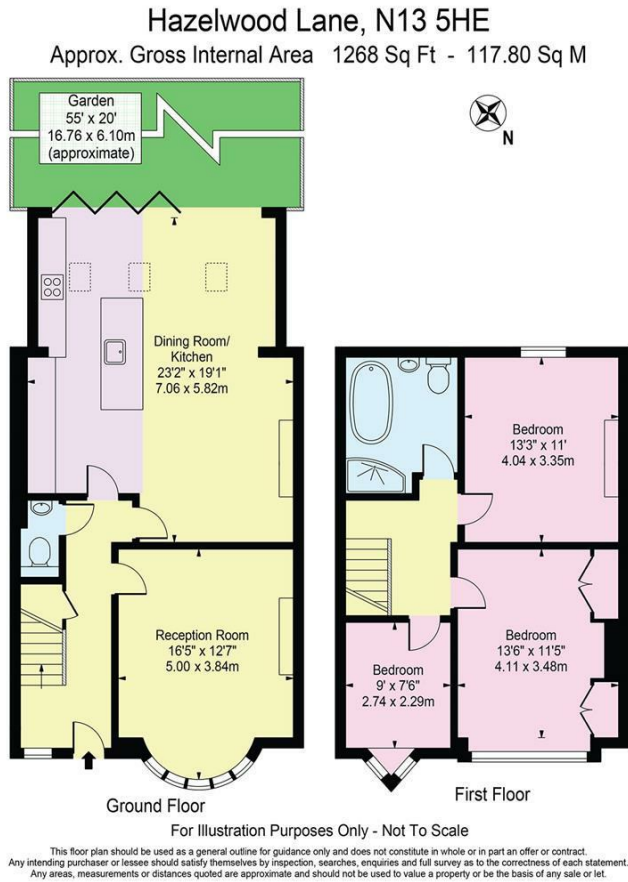
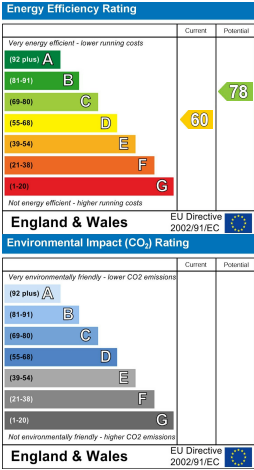






Hazelwood Lane  
Palmers Green  
London  
N13 5HE

Tenure: Freehold  
Gross Internal Area: 1268.00 sq ft



Property particulars as supplied by Anthony Webb Estate Agents are set out as a general outline in accordance with the Property Misdescriptions Act (1991) only for the guidance of intending purchasers of lessees, and do not constitute any part of an offer or contract. Details are given without any responsibility, and any intending purchasers, lessees or third parties should not rely on them as inspection or otherwise as to the correctness of each of them. We have not carried out a structural survey and the services, appliances and specific fittings have not been tested. All photographs, measurements, floor plans and distances referred to are given as a guide only and should not be relied upon for the purchase of carpets or any other fixtures statements or representations of fact, but must satisfy themselves by or of fittings, gardens, roof terraces, balconies and communal gardens as well as tenure and lease details cannot have their accuracy guaranteed for intending purchasers. Lease details, service ground rent (where applicable) are given as a guide only and should be checked and confirmed by your solicitor prior to exchange of contracts. no person in the employment of Anthony Webb has any authority to make any representation or warranty whatever in relation to this property.

348 Green Lanes, Palmers Green, London N13 5TJ  
020 8882 7888  
palmersgreen@anthonywebb.co.uk  
anthonywebb.co.uk

