



Lightcliffe Road, Palmers Green, London, N13
Chain Free £775,000 Freehold

Anthony Webb
ESTATE AGENTS

Lightcliffe Road, Palmers Green, London, N13

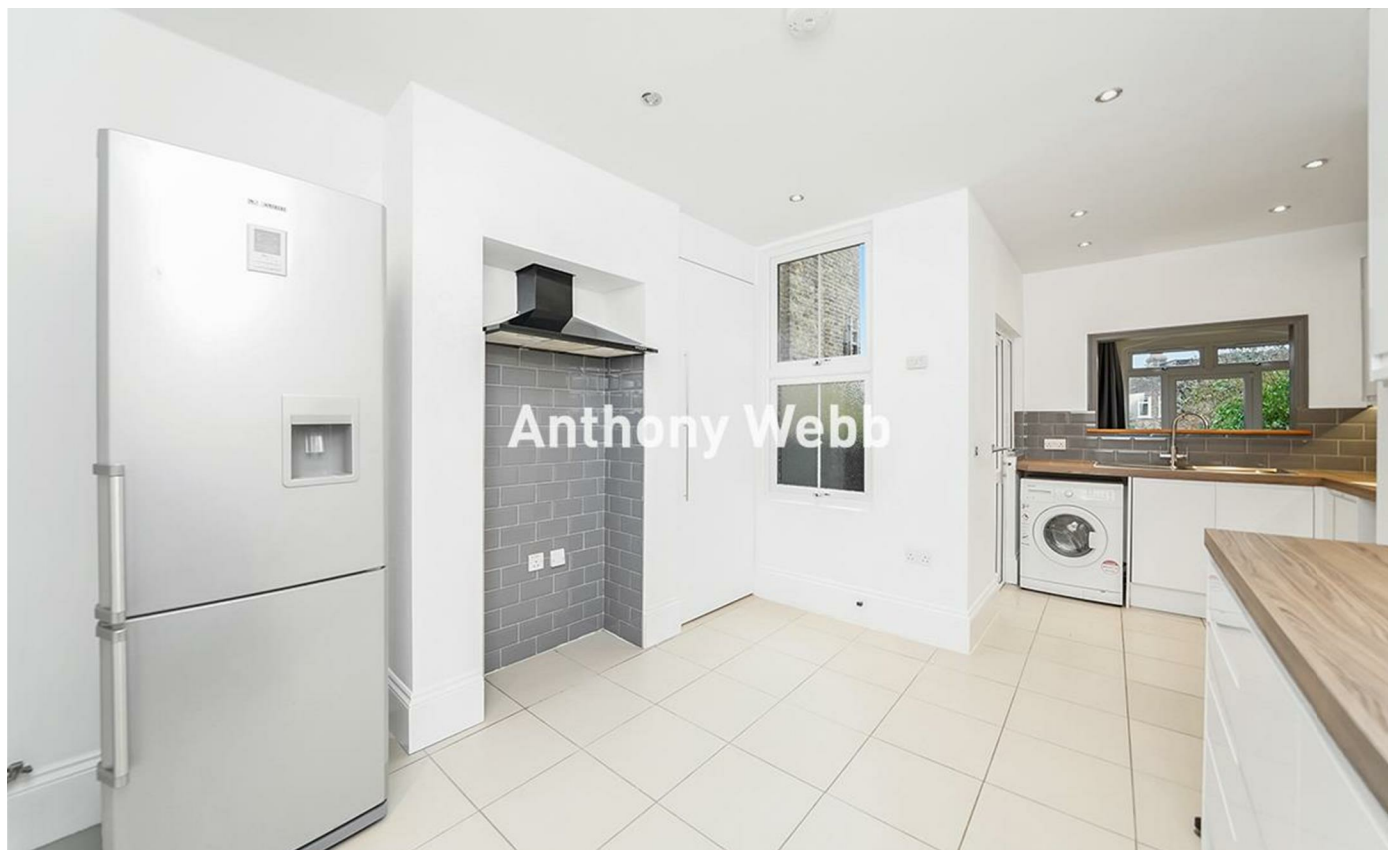
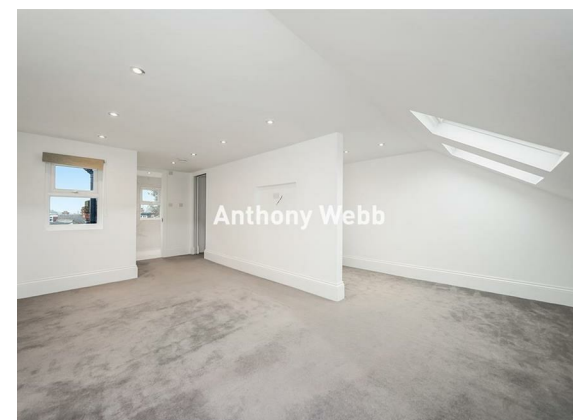
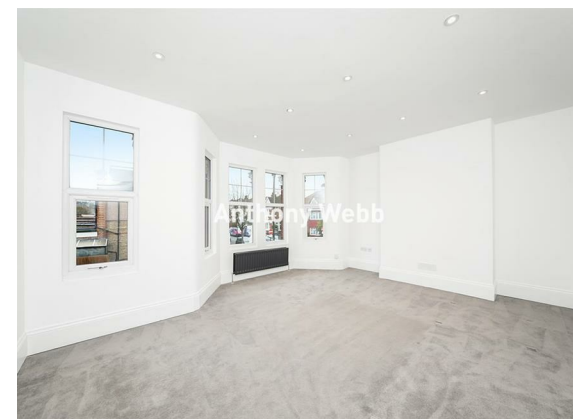
A well presented CHAIN FREE four bedroom Edwardian family house which has been renovated top to bottom in the last few years by the current vendors. The property offers an impressive 1,541 square feet of well appointed living space over three floors.

Located in the sought-after area of Palmers Green, residents will benefit from a vibrant community with excellent local amenities, including shops, restaurants, parks, and schools. The property is also well-connected to public transport, making it easy to commute to central London and beyond via Palmers Green mainline station and various bus routes.

Two good size receptions • Modern kitchen/diner • Family first floor bathroom • Four double bedrooms • En-suite shower room to main bedroom in converted loft space • Double glazing • Gas central heating • Front garden with original Edwardian wall and front door • South East facing rear garden measuring 63ft x 17ft.

Enfield Council tax band E

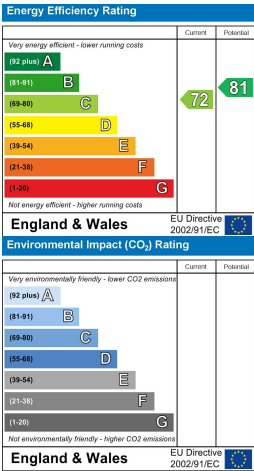
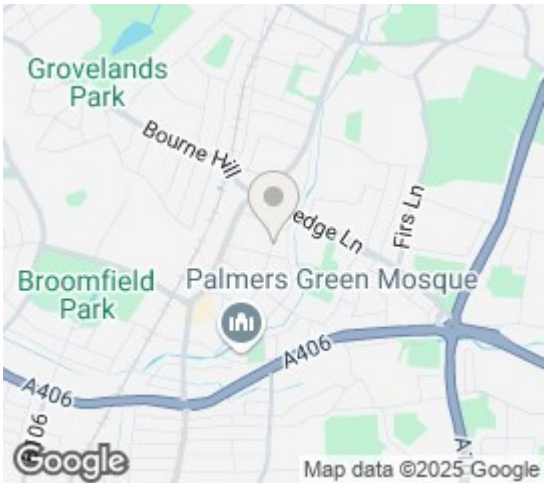
- Four double bedrooms
- Edwardian terrace house
- Two receptions
- Modern kitchen/diner
- Two bath/shower rooms
- Renovated from top to bottom
- Double glazing/gas central heating
- Front and rear gardens





Lightcliffe Road
Palmers Green
London
N13 5PW

Tenure: Freehold
Gross Internal Area: 1541.00 sq ft



Property particulars as supplied by Anthony Webb Estate Agents are set out as a general outline in accordance with the Property Misdescriptions Act (1991) only for the guidance of intending purchasers of lessees, and do not constitute any part of an offer or contract. Details are given without any responsibility, and any intending purchasers, lessees or third parties should not rely on them as inspection or otherwise as to the correctness of each of them. We have not carried out a structural survey and the services, appliances and specific fittings have not been tested. All photographs, measurements, floor plans and distances referred to are given as a guide only and should not be relied upon for the purchase of carpets or any other fixtures statements or representations of fact, but must satisfy themselves by or of fittings, gardens, roof terraces, balconies and communal gardens as well as tenure and lease details cannot have their accuracy guaranteed for intending purchasers. Lease details, service ground rent (where applicable) are given as a guide only and should be checked and confirmed by your solicitor prior to exchange of contracts. no person in the employment of Anthony Webb has any authority to make any representation or warranty whatever in relation to this property.

348 Green Lanes, Palmers Green, London N13 5TJ
020 8882 7888
palmersgreen@anthonywebb.co.uk
anthonywebb.co.uk

