



Hamilton Crescent, Palmers Green, London, N13
£899,000 Freehold

Anthony Webb
ESTATE AGENTS

Hamilton Crescent, Palmers Green, London, N13

A unique and stunning original four bedroom double fronted end of terrace Edwardian house offering in excess of 1400sq. ft of bright and well appointed living space. The current vendors have lovingly refurbished the property and blended the period features and contemporary fittings to create a wonderful family home

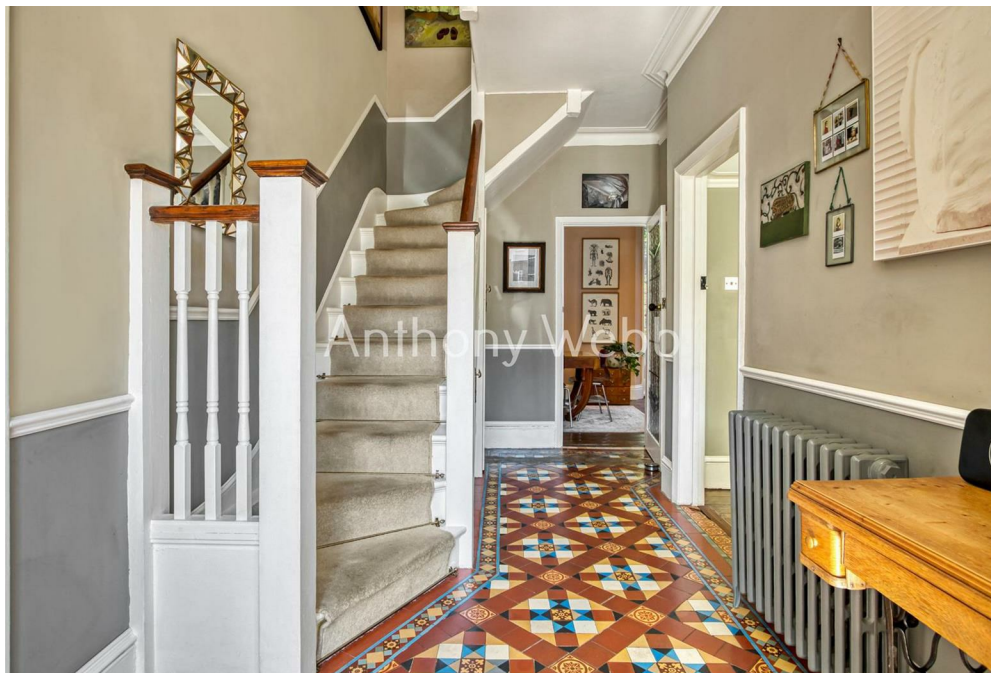
Hamilton Crescent is a popular residential turning off Hazelwood Lane within a few minutes walk of Green Lanes shops, restaurants, bus routes and Palmers Green mainline station into Moorgate. There are numerous green spaces/walks within easy reach including The New River, Hazelwood recreation ground and Broomfield Park. Hazelwood primary school and Palmers Green Mosque are also a short walk away.

Block paved gated drive • Front garden with tiled path to original storm porch and front door • Spacious hallway with original tessellated tiled floor and staircase • Two generous receptions both with bay windows and feature fireplace/log burner • Modern family kitchen/diner with utility cupboard, marble work surfaces and original stained glass French doors to garden • First floor landing with access to loft space with potential to convert subject to usual consents • Main double bedroom with bay window and modern en-suite shower room • Two further double bedrooms with bay windows and feature fireplaces • A good size single bedroom • Family bathroom • Double glazing • Gas central heating • West facing private rear garden with paved patio area and lawn • Insulated summer house/office garden with power and light

Enfield Council Tax Band F

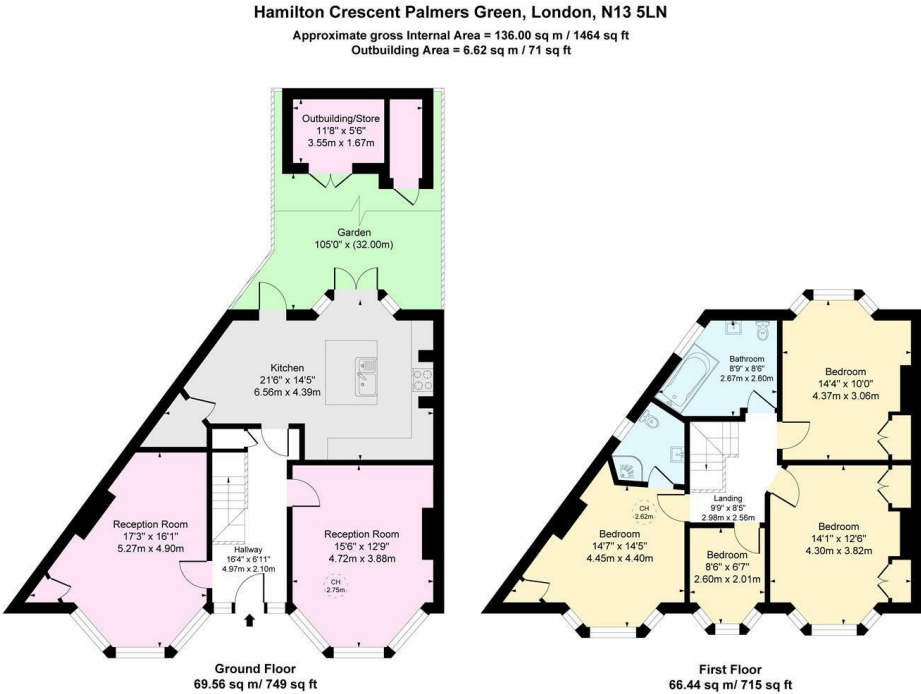
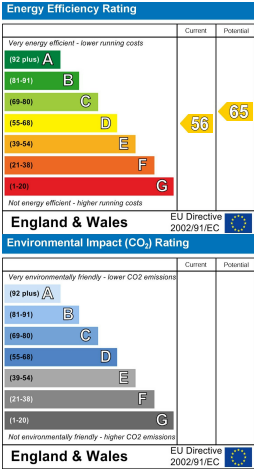
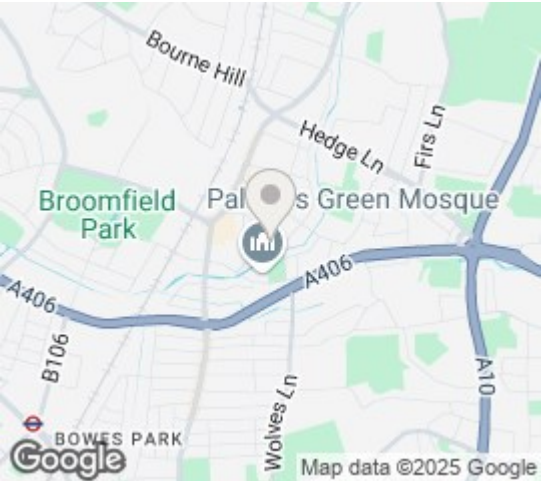
- Four original bedrooms
- Edwardian end of terrace house
- Two receptions
- Modern kitchen/diner
- Two bath/shower rooms
- Many period features
- Off street parking
- Front and rear gardens





Hamilton Crescent
Palmers Green
London
N13 5LN

Tenure: Freehold
Gross Internal Area: 1464.00 sq ft



This floor plan is for illustrative purposes only
and must not be relied upon as a statement of fact.

Property particulars as supplied by Anthony Webb Estate Agents are set out as a general outline in accordance with the Property Misdescriptions Act (1991) only for the guidance of intending purchasers of lessees, and do not constitute any part of an offer or contract. Details are given without any responsibility, and any intending purchasers, lessees or third parties should not rely on them as inspection or otherwise as to the correctness of each of them. We have not carried out a structural survey and the services, appliances and specific fittings have not been tested. All photographs, measurements, floor plans and distances referred to are given as a guide only and should not be relied upon for the purchase of carpets or any other fixtures statements or representations of fact, but must satisfy themselves by or of fittings, gardens, roof terraces, balconies and communal gardens as well as tenure and lease details cannot have their accuracy guaranteed for intending purchasers. Lease details, service ground rent (where applicable) are given as a guide only and should be checked and confirmed by your solicitor prior to exchange of contracts. no person in the employment of Anthony Webb has any authority to make any representation or warranty whatever in relation to this property.

348 Green Lanes, Palmer's Green, London N13 5TJ
020 8882 7888
palmersgreen@anthonywebb.co.uk
anthonywebb.co.uk

