



**Madeira Road, Palmers Green, London, N13**  
**Chain Free £600,000 Freehold**

**Anthony Webb**  
ESTATE AGENTS

# Madeira Road, Palmers Green, London, N13

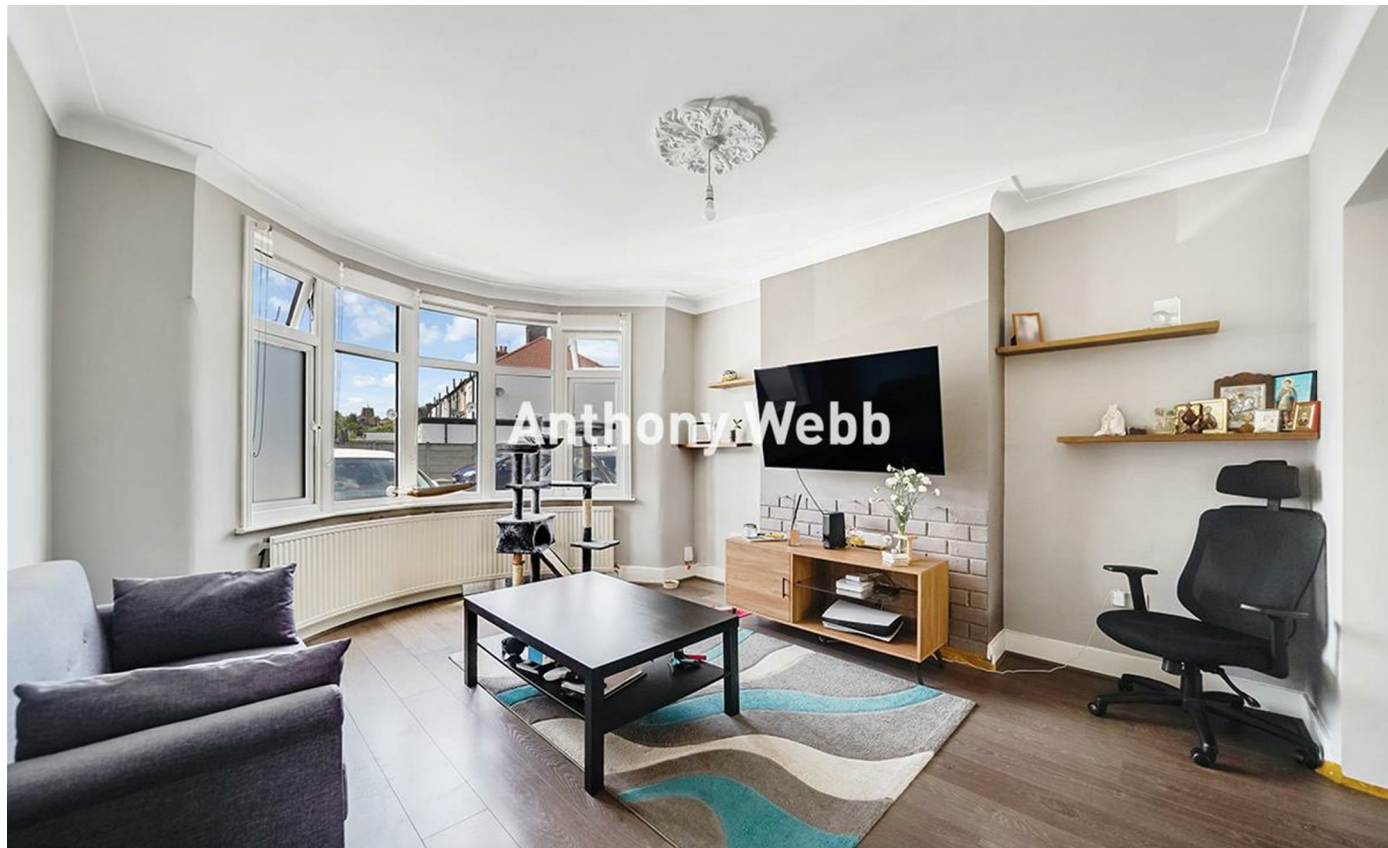
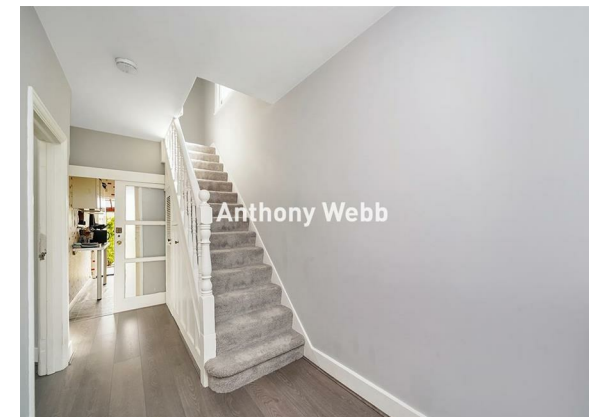
Chain free 1930s built three bedroom end of terrace house. The property offers over 1200sq ft of living space over two floors and has great potential to create a wonderful family home.

Madeira Road is a quiet residential cul-de-sac located off Hedge Lane within easy walking distance of Palmers Greens shops, restaurants, bus routes and mainline station into Moorgate. Southgate underground station is a short ride away via the W6 bus route. There are various green spaces within easy walking distance including Hazelwood recreation ground, The New River and Broomfield Park.

Original stained glass front door to hallway • Spacious through lounge • Rear lean-to • Kitchen • First floor landing with access to loft space with potential to convert subject to usual consents • Two double bedrooms • One single bedroom • Modern Family bathroom • Round bay windows • Gas central heating • Off street parking • Rear garden measuring 75ft x 20ft approx.

Enfield council tax band E

- CHAIN FREE
- Three bedroom end of Terrace house
- Modern Through lounge
- Fitted kitchen
- Loft space with potential to convert (sspp)
- Modern Family bathroom
- Rear garden measuring 75ft
- quiet residential cul-de-sac location
- Green spaces within easy walking distance





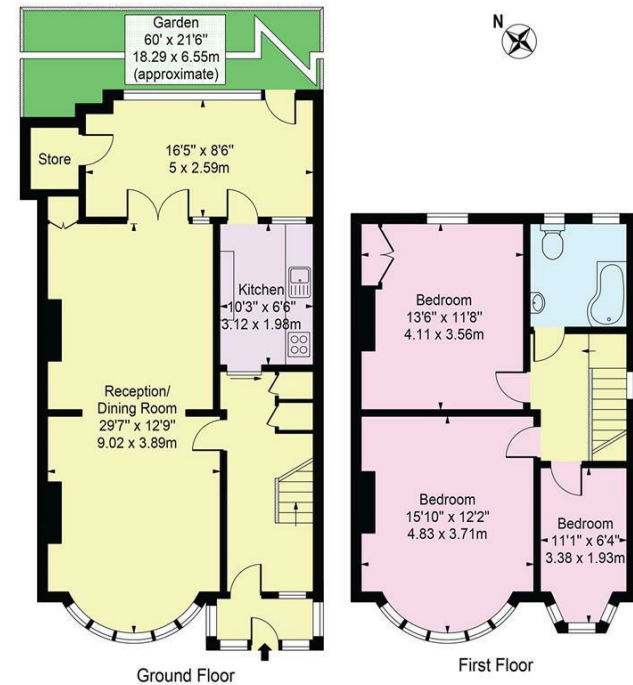
**Madeira Road  
Palmers Green  
London  
N13 5SS**

Tenure: Freehold  
Gross Internal Area: 1274.00 sq ft



Energy Efficiency Rating		Current	Potential
Very energy efficient - lower running costs			
(92 plus) A			
(81-91) B			
(69-80) C			
(55-68) D			
(39-54) E			
(21-38) F			
(1-20) G			
Not energy efficient - higher running costs			
England & Wales		EU Directive 2002/91/EC	
Environmental Impact (CO <sub>2</sub> ) Rating		Current	Potential
Very environmentally friendly - lower CO <sub>2</sub> emissions			
(92 plus) A			
(81-91) B			
(69-80) C			
(55-68) D			
(39-54) E			
(21-38) F			
(1-20) G			
Not environmentally friendly - higher CO <sub>2</sub> emissions			
England & Wales		EU Directive 2002/91/EC	

**Madeira Road, N13 5SS**  
Approx. Gross Internal Area 1274 Sq Ft - 118.36 Sq M



For Illustration Purposes Only - Not To Scale

This floor plan should be used as a general outline for guidance only and does not constitute in whole or in part an offer or contract. Any intending purchaser or lessee should satisfy themselves by inspection, searches, enquiries and full survey as to the correctness of each statement. Any areas, measurements or distances quoted are approximate and should not be used to value a property or be the basis of any sale or let.

Property particulars as supplied by Anthony Webb Estate Agents are set out as a general outline in accordance with the Property Misdescriptions Act (1991) only for the guidance of intending purchasers of lessees, and do not constitute any part of an offer or contract. Details are given without any responsibility, and any intending purchasers, lessees or third parties should not rely on them as inspection or otherwise as to the correctness of each of them. We have not carried out a structural survey and the services, appliances and specific fittings have not been tested. All photographs, measurements, floor plans and distances referred to are given as a guide only and should not be relied upon for the purchase of carpets or any other fixtures statements or representations of fact, but must satisfy themselves by or of fittings, gardens, roof terraces, balconies and communal gardens as well as tenure and lease details cannot have their accuracy guaranteed for intending purchasers. Lease details, service ground rent (where applicable) are given as a guide only and should be checked and confirmed by your solicitor prior to exchange of contracts. No person in the employment of Anthony Webb has any authority to make any representation or warranty whatever in relation to this property.

**348 Green Lanes, Palmers Green, London N13 5TJ**  
**020 8882 7888**  
**palmersgreen@anthonywebb.co.uk**  
**anthonywebb.co.uk**