



**Hawthorn Avenue, Palmers Green, London, N13**  
**£850,000 Freehold**

**Anthony Webb**  
ESTATE AGENTS

# Hawthorn Avenue, Palmers Green, London, N13

Stunning five bedroom extended terrace family home with has been completely refurbished to a very high standard throughout. The property offers over 1600sq ft of living space over three bright and airy floors.

Hawthorn Avenue is a popular residential turning in the heart of Palmers Green within easy walking distance of Aldermans Hill and Green Lanes shops, restaurants, Broomfield Park and mainline station into Moorgate. Arnos Grove and Bounds Green underground stations are also within easy reach.

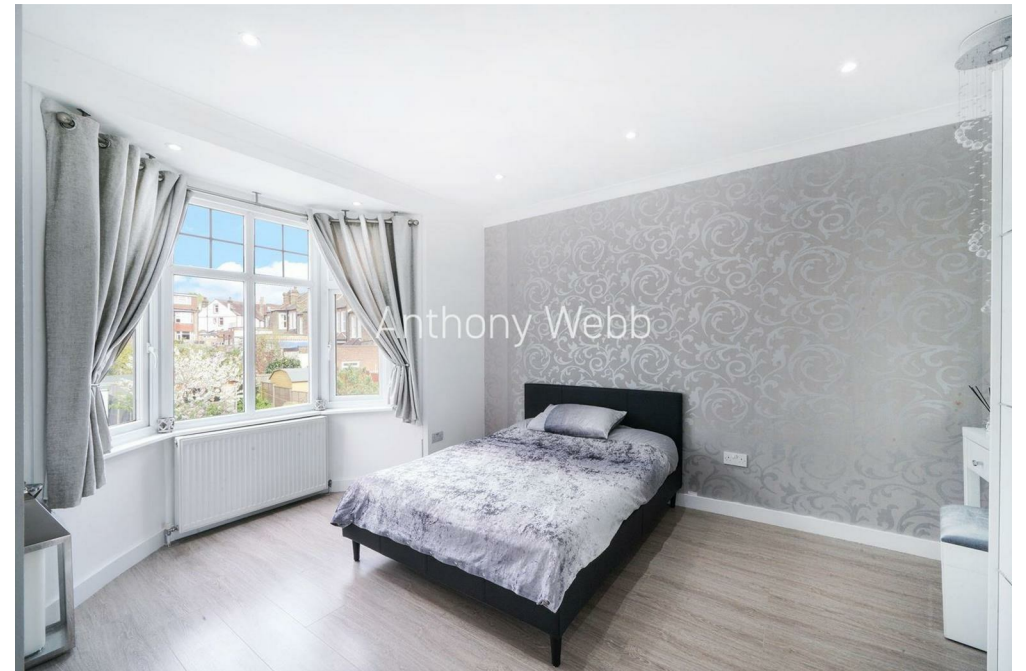
Good size hallway with storage cupboard and tiled floor • Front reception with bay window • Rear reception opening to extended kitchen/diner • Fully fitted contemporary kitchen with tiled floor, solid work surfaces and folding doors to garden • The first floor offers two good size double bedrooms with bay windows • Single bedroom with bay window • Modern family bath/shower room • The converted loft consists of two double bedrooms (one currently used a dressing room with eaves storage space) and a modern shower room • Gas central heating • Double glazing • Well maintained rear garden measuring approx 45ft x 20ft with outbuilding/shed.

Enfield Council Tax band E

- Five bedrooms
- Extended terrace family home
- Two receptions
- Kitchen/diner
- Two bath/shower rooms
- Guest ground floor w.c
- Double glazing/gas central heating
- Landscaped rear garden









# Hawthorn Avenue Palmers Green London N13 4JX

Tenure: Freehold  
Gross Internal Area: 1636.00 sq ft



Energy Efficiency Rating		Current	Potential
Very energy efficient - lower running costs			
(92 plus) A			
(81-91) B			
(69-80) C			
(55-68) D			
(39-54) E			
(21-38) F			
(1-20) G			
Not energy efficient - higher running costs			
England & Wales		EU Directive 2002/91/EC	
Environmental Impact (CO <sub>2</sub> ) Rating		Current	Potential
Very environmentally friendly - lower CO <sub>2</sub> emissions			
(92 plus) A			
(81-91) B			
(69-80) C			
(55-68) D			
(39-54) E			
(21-38) F			
(1-20) G			
Not environmentally friendly - higher CO <sub>2</sub> emissions			
England & Wales		EU Directive 2002/91/EC	

## Palmers Green, N13 4JX

Approx Gross Internal Area = 152 sq m / 1636 sq ft  
Outbuilding = 9 sq m / 99 sq ft  
Patio = 85 sq m / 914 sq ft  
Garden = 81 sq m / 872 sq ft  
Total = 327 sq m / 3521 sq ft



The Floor plan is not to scale and measurements and areas shown are approximate and therefore should be used for illustrative purposes only. The plan has been prepared in accordance with the RICS code of Measuring Practice and whilst we have confidence in the information produced it must not be relied on. Maximum lengths and widths are represented on the floor plan. If there is any aspect of particular importance, you should carry out or commission your own inspection of the property.

Property particulars as supplied by Anthony Webb Estate Agents are set out as a general outline in accordance with the Property Misdescriptions Act (1991) only for the guidance of intending purchasers of lessees, and do not constitute any part of an offer or contract. Details are given without any responsibility, and any intending purchasers, lessees or third parties should not rely on them as inspection or otherwise as to the correctness of each of them. We have not carried out a structural survey and the services, appliances and specific fittings have not been tested. All photographs, measurements, floor plans and distances referred to are given as a guide only and should not be relied upon for the purchase of carpets or any other fixtures statements or representations of fact, but must satisfy themselves by or of fittings, gardens, roof terraces, balconies and communal gardens as well as tenure and lease details cannot have their accuracy guaranteed for intending purchasers. Lease details, service ground rent (where applicable) are given as a guide only and should be checked and confirmed by your solicitor prior to exchange of contracts. no person in the employment of Anthony Webb has any authority to make any representation or warranty whatever in relation to this property.

348 Green Lanes, Palmers Green, London N13 5TJ  
020 8882 7888  
palmersgreen@anthonywebb.co.uk  
anthonywebb.co.uk

**Anthony Webb**  
ESTATE AGENTS