



Rochester Road , Aylesford ME20 7BS

- GUIDE PRICE: £550,000-£575,000
 - Downstairs Cloakroom
- Master Bedroom With En Suite
 - Separate Utility Room
 - Large Family Bathroom
- Two Sizeable Reception Rooms
 - Private Driveway
- Open Plan Kitchen / Breakfast Room
 - Conservatory
 - South East Facing Rear Garden

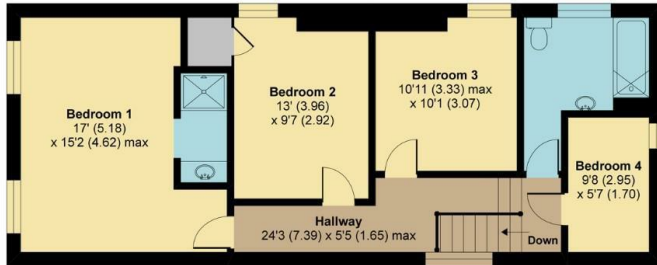
Guide Price £550,000 Freehold



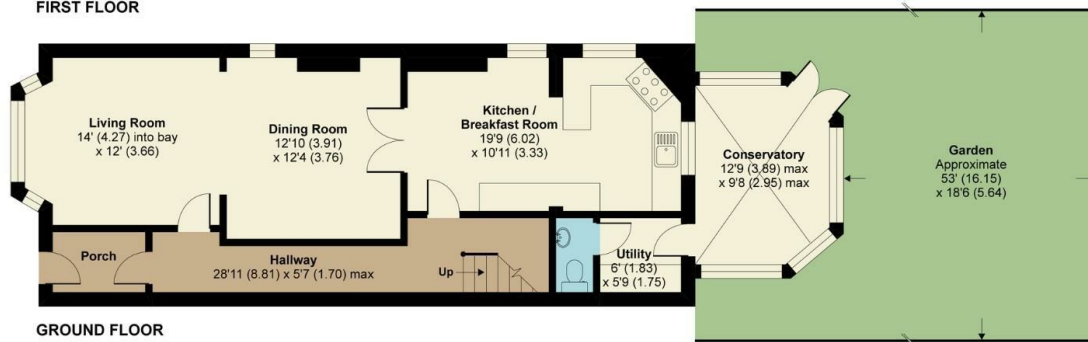
Local Authority
Council Tax Band E
EPC Rating D

Rochester Road, Aylesford, ME20

Approximate Area = 1658 sq ft / 154 sq m
For identification only - Not to scale



FIRST FLOOR



GROUND FLOOR



Floor plan produced in accordance with RICS Property Measurement Standards incorporating International Property Measurement Standards (IPMS2 Residential). © richcom 2021. Produced for Simon Miller & Company. REF: 697804

Malling Office

777 London Road, Larkfield, Aylesford,
Kent, ME20 6DE

Contact

01732 875706
larkfieldsales@simonmiller.co.uk
<https://simonmiller.co.uk/>

Agents Note: Whilst every care has been taken to prepare these particulars, they are for guidance purposes only. All measurements are approximate and for general guidance purposes only and whilst every care has been taken to ensure accuracy, they should not be relied upon and potential buyers/tenants are advised to recheck the measurements.