



## Holborough Road

, Snodland ME6 5NJ

- A Two Bedroom End of Terrace House
- Vacant Possession Available
- Centrally positioned house within walking distance to all amenities
- Does require some modernising
- Enclosed rear garden
- This home is available to over 54's only.

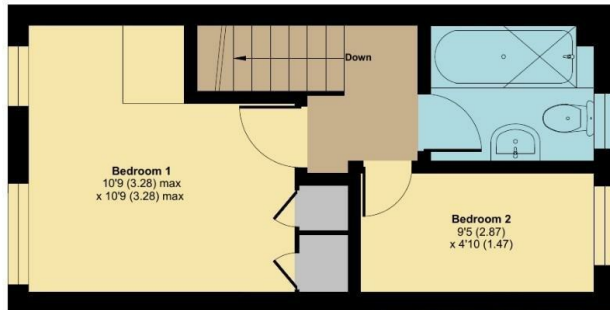
**Offers In The Region Of £175,000 Freehold**



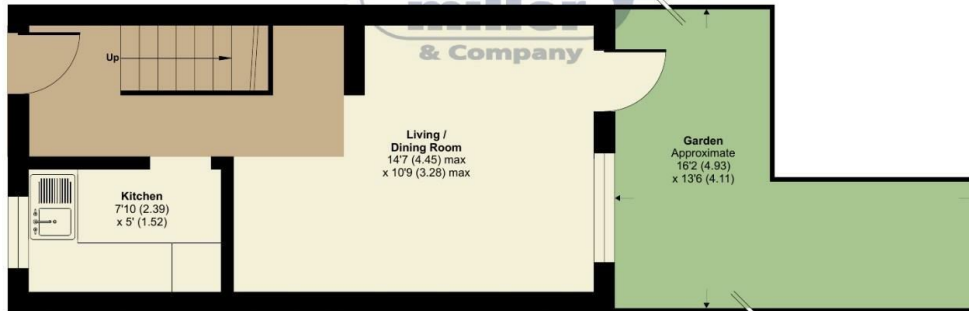
Local Authority  
Council Tax Band B  
EPC Rating C

## Holborough Road, Snodland, ME6

Approximate Area = 498 sq ft / 46.2 sq m  
For identification only - Not to scale



FIRST FLOOR



GROUND FLOOR



Floor plan produced in accordance with RICS Property Measurement Standards incorporating International Property Measurement Standards (IPMS2 Residential). © nichecom 2024. Produced for Simon Miller & Company. REF: 1117013



**Malling Office**  
777 London Road, Larkfield, Aylesford,  
Kent, ME20 6DE

**Contact**  
01732 875706  
larkfieldsales@simonmiller.co.uk  
<https://simonmiller.co.uk/>

Agents Note: Whilst every care has been taken to prepare these particulars, they are for guidance purposes only. All measurements are approximate and for general guidance purposes only and whilst every care has been taken to ensure accuracy, they should not be relied upon and potential buyers/tenants are advised to recheck the measurements.