



## 15 Twelve Acres Road

, Snodland ME6 5FQ

- Ground Floor
- West Facing 'L' Shaped Balcony
- Two Double Bedrooms
- Allocated Parking
- Open Plan Layout
- Views Of The Lakes
- Master Bedroom With En Suite And Built In Wardrobe
- CHAIN FREE

**£290,000 Leasehold**

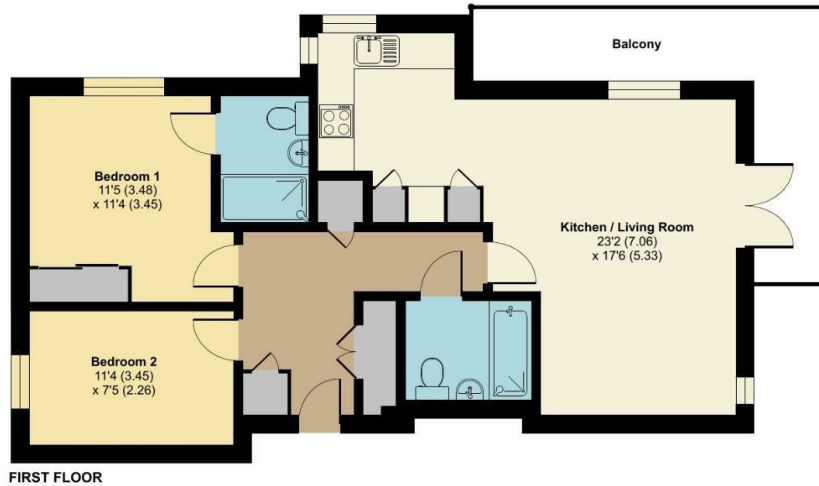


Local Authority  
Council Tax Band C  
EPC Rating

## Twelve Acres Road, Snodland, ME6

Approximate Area = 728 sq ft / 67.6 sq m

For identification only - Not to scale



Floor plan produced in accordance with RICS Property Measurement Standards incorporating International Property Measurement Standards (IPMS2 Residential). © nichecom 2024. Produced for Simon Miller & Company. REF: 1179070

### Malling Office

777 London Road, Larkfield, Aylesford,  
Kent, ME20 6DE

### Contact

01732 875706  
larkfieldsales@simonmiller.co.uk  
<https://simonmiller.co.uk/>

Agents Note: Whilst every care has been taken to prepare these particulars, they are for guidance purposes only. All measurements are approximate and for general guidance purposes only and whilst every care has been taken to ensure accuracy, they should not be relied upon and potential buyers/tenants are advised to recheck the measurements.