



## Kiln Barn Road

, Ditton ME20 6AH

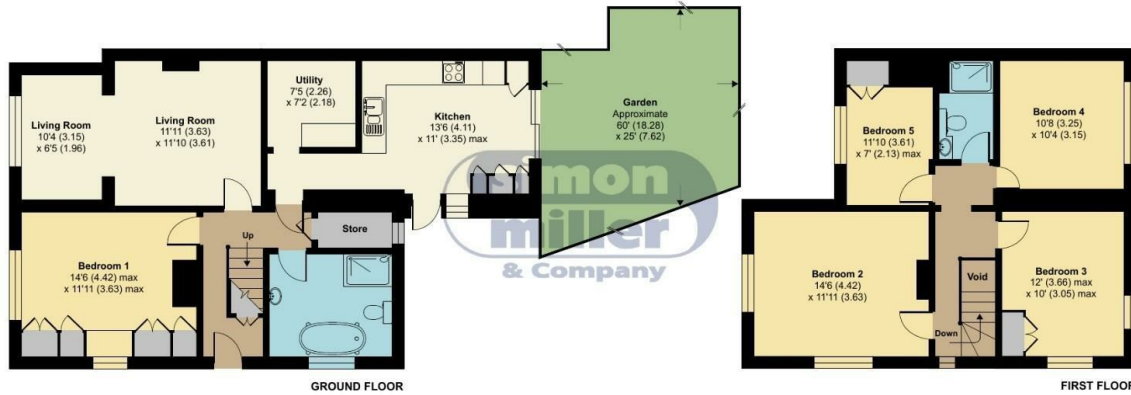
- END OF CHAIN
- Great Condition Throughout
- Four/Five Double Bedrooms
- Downstairs & Upstairs Bathroom
- Large Driveway
- Well Maintained Rear Garden
- Separate Utility Room

**£499,950 Freehold**

Local Authority  
Council Tax Band E  
EPC Rating D

## Kiln Barn Road, Ditton, Aylesford, ME20

Approximate Area = 1514 sq ft / 140.6 sq m  
For identification only - Not to scale



Floor plan produced in accordance with RICS Property Measurement Standards incorporating International Property Measurement Standards (IPMS2 Residential). © richecom 2024. Produced for Simon Miller & Company. REF: 1164106

### Malling Office

777 London Road, Larkfield, Aylesford,  
Kent, ME20 6DE

### Contact

01732 875706  
larkfieldsales@simonmiller.co.uk  
<https://simonmiller.co.uk/>

Agents Note: Whilst every care has been taken to prepare these particulars, they are for guidance purposes only. All measurements are approximate and for general guidance purposes only and whilst every care has been taken to ensure accuracy, they should not be relied upon and potential buyers/tenants are advised to recheck the measurements.