



## Rochester Road , Aylesford ME20 7BN

- CHAIN FREE!
- South Facing 60Ft Rear Garden
- Large Driveway
- Flexible Family Accommodation
- Potential To Extend Further
- Four Reception Rooms
- Recently Fitted Bathroom AND En Suite
- All Double Bedrooms
- Master Bedroom With En Suite And Walk In Wardrobe
- Ready To View NOW

**£850,000 Freehold**



Local Authority  
Council Tax Band G  
EPC Rating D

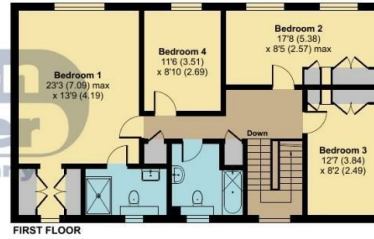
## Rochester Road, Aylesford, ME20

Approximate Area = 2490 sq ft / 231.3 sq m

Garage = 190 sq ft / 17.6 sq m

Total = 2680 sq ft / 248.9 sq m

For identification only - Not to scale



Floor plan produced in accordance with RICS Property Measurement Standards incorporating International Property Measurement Standards (IPMS2 Residential). © nichecom 2024. Produced for Simon Miller & Company. REF: 1139330

### Mailing Office

777 London Road, Larkfield, Aylesford,  
Kent, ME20 6DE

### Contact

01732 875706  
larkfieldsales@simonmiller.co.uk  
<https://simonmiller.co.uk/>

Agents Note: Whilst every care has been taken to prepare these particulars, they are for guidance purposes only. All measurements are approximate and for general guidance purposes only and whilst every care has been taken to ensure accuracy, they should not be relied upon and potential buyers/tenants are advised to recheck the measurements.

