



Holborough Road

, Snodland ME6 5PD

- GUIDE PRICE: £300,000-£325,000
- Two Reception Rooms
- Over 1100 SqFt Of Accommodation
- Ready To View NOW
- West Facing Rear Garden
- Within Walking Distance Of Amenities
- Modern And Contemporary Throughout
- Walking Distance To High Speed Snodland Train Station

Guide Price £300,000 Freehold

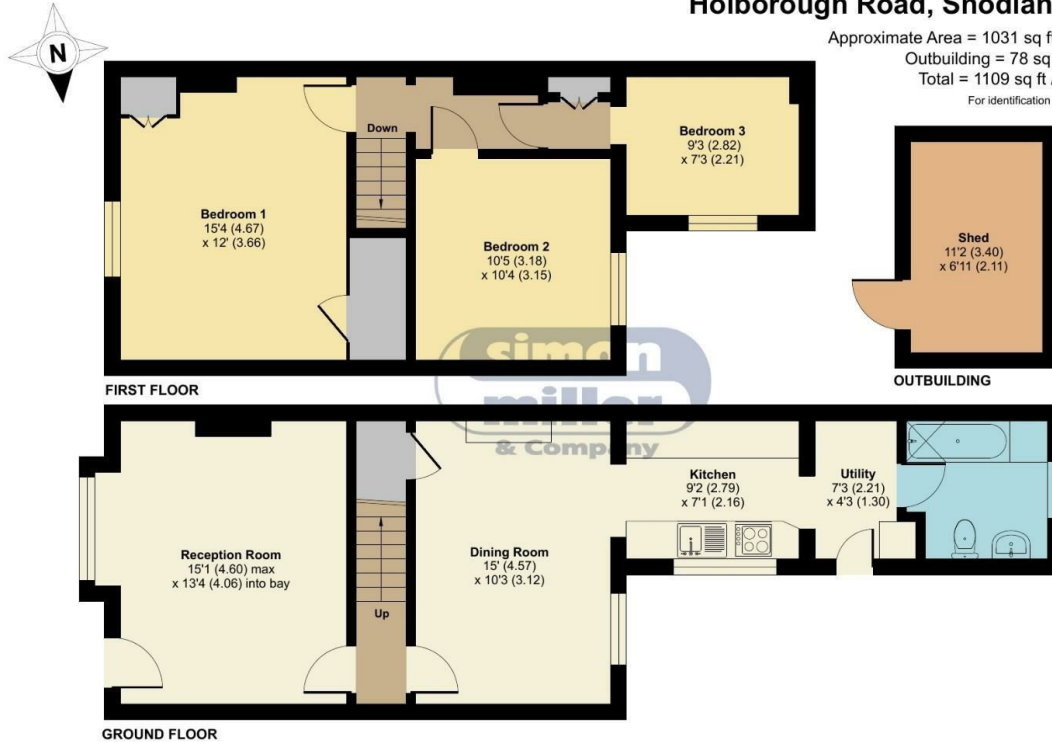


Local Authority
Council Tax Band C
EPC Rating D

Holborough Road, Snodland, ME6

Approximate Area = 1031 sq ft / 95.7 sq m
Outbuilding = 78 sq ft / 7.2 sq m
Total = 1109 sq ft / 102.9 sq m

For identification only - Not to scale



Floor plan produced in accordance with RICS Property Measurement Standards incorporating International Property Measurement Standards (IPMS2 Residential). © nichecom 2024. Produced for Simon Miller & Company. REF: 1130923



Malling Office

777 London Road, Larkfield, Aylesford,
Kent, ME20 6DE

Contact

01732 875706
larkfieldsales@simonmiller.co.uk
<https://simonmiller.co.uk/>

Agents Note: Whilst every care has been taken to prepare these particulars, they are for guidance purposes only. All measurements are approximate and for general guidance purposes only and whilst every care has been taken to ensure accuracy, they should not be relied upon and potential buyers/tenants are advised to recheck the measurements.