

## The Croft

Leybourne, West Malling ME19 5QD

- READY TO VIEW NOW!
- Modern And Contemporary Throughout
- Immaculately Presented Bathroom
- Three Good Sized Bedrooms
- Corner Plot Three Bedroom Semi Detached Family Home
- Recently Completed Garage Conversion
- Two Reception Rooms
- New External Windows And Front Door

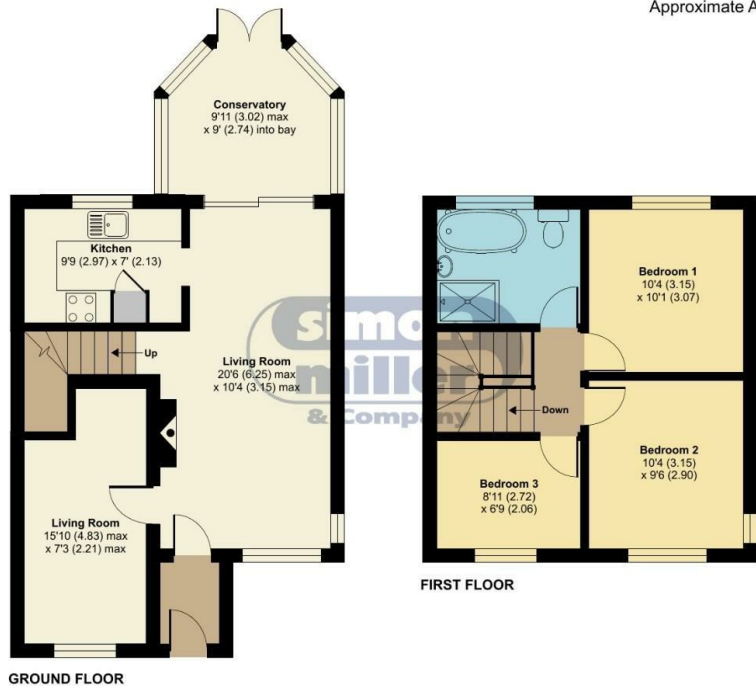
**£400,000 Freehold**

Local Authority  
Council Tax Band D  
EPC Rating C

## The Croft, Leybourne, West Malling, ME19

Approximate Area = 944 sq ft / 87.7 sq m

For identification only - Not to scale



Floor plan produced in accordance with RICS Property Measurement Standards incorporating International Property Measurement Standards (IPMS2 Residential). © nichecom 2024. Produced for Simon Miller & Company. REF: 1118629

**Malling Office**  
777 London Road, Larkfield, Aylesford,  
Kent, ME20 6DE

**Contact**  
01732 875706  
larkfieldsales@simonmiller.co.uk  
<https://simonmiller.co.uk/>

Agents Note: Whilst every care has been taken to prepare these particulars, they are for guidance purposes only. All measurements are approximate and for general guidance purposes only and whilst every care has been taken to ensure accuracy, they should not be relied upon and potential buyers/tenants are advised to recheck the measurements.

