

The Croft

Leybourne, West Malling ME19 5QD

- GUIDE PRICE £425,000 - £450,000
- Modern And Contemporary Throughout
- Immaculately Presented Bathroom
- Three Good Sized Bedrooms
- Corner Plot Three Bedroom Semi Detached Family Home
- Recently Completed Garage Conversion
- Two Reception Rooms
- New External Windows And Front Door

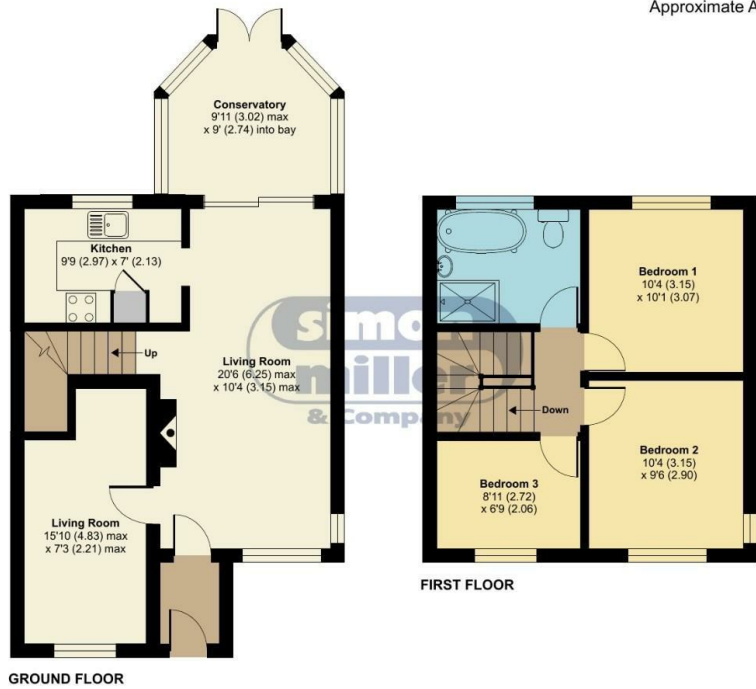
Price Guide £425,000 Freehold

Local Authority
Council Tax Band D
EPC Rating C

The Croft, Leybourne, West Malling, ME19

Approximate Area = 944 sq ft / 87.7 sq m

For identification only - Not to scale



Floor plan produced in accordance with RICS Property Measurement Standards incorporating International Property Measurement Standards (IPMS2 Residential). © richcom 2024. Produced for Simon Miller & Company. REF: 1118629

Malling Office

777 London Road, Larkfield, Aylesford,
Kent, ME20 6DE

Contact

01732 875706
larkfieldsales@simonmiller.co.uk
<https://simonmiller.co.uk/>

Agents Note: Whilst every care has been taken to prepare these particulars, they are for guidance purposes only. All measurements are approximate and for general guidance purposes only and whilst every care has been taken to ensure accuracy, they should not be relied upon and potential buyers/tenants are advised to recheck the measurements.

