



High Street

East Malling, West Malling ME19 6AJ

- GUIDE PRICE: £400,000-£425,000
- Amazing Gardens to rear with a Natural Stream & Summer House
- Ground Floor & First Floor Bathrooms
- Bedroom three is accessed via bedroom two
- A Three Bedroom Bay Fronted Home
- Immaculate Presentation Throughout
- Walking Distance to the Mainline Train Station

Guide Price £400,000 Freehold



Local Authority
Council Tax Band D
EPC Rating D

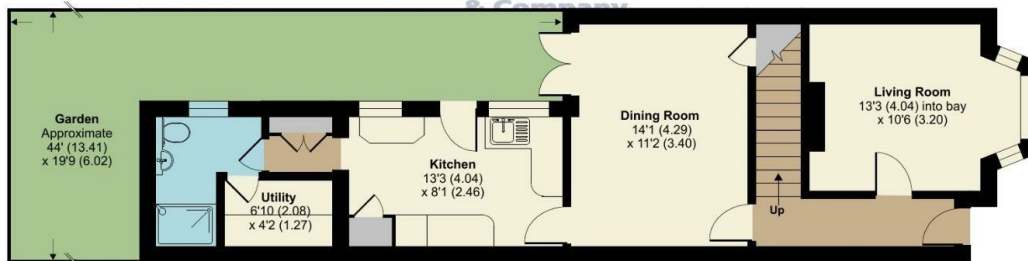
High Street, East Malling, West Malling, ME19

Approximate Area = 1053 sq ft / 97.8 sq m

For identification only - Not to scale



FIRST FLOOR



GROUND FLOOR



Floor plan produced in accordance with RICS Property Measurement Standards incorporating International Property Measurement Standards (IPMS2 Residential). © nichecom 2024. Produced for Simon Miller & Company. REF: 1104863

Malling Office

777 London Road, Larkfield, Aylesford,
Kent, ME20 6DE

Contact

01732 875706
larkfieldsales@simonmiller.co.uk
<https://simonmiller.co.uk/>

Agents Note: Whilst every care has been taken to prepare these particulars, they are for guidance purposes only. All measurements are approximate and for general guidance purposes only and whilst every care has been taken to ensure accuracy, they should not be relied upon and potential buyers/tenants are advised to recheck the measurements.

