



Greenfield Close

Eccles, Aylesford ME20 7HU

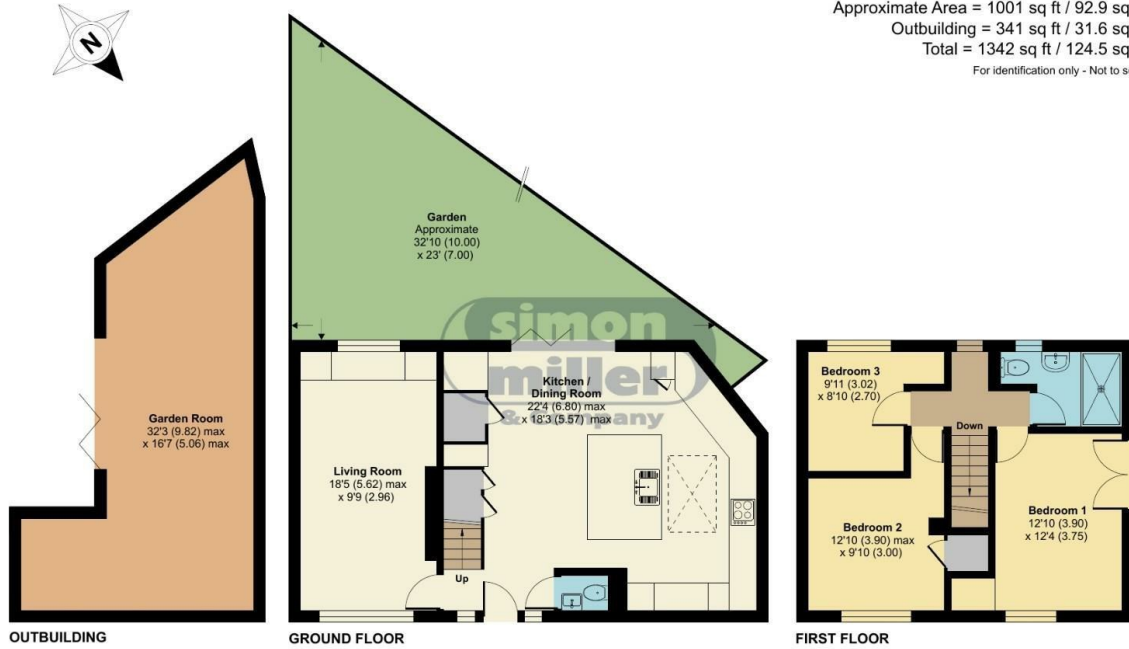
- CHAIN FREE
- Open Plan High Spec Kitchen / Diner
- Log Burning Stove In Lounge
- Ready To View NOW!
- Modern And Contemporary Throughout
- Master Bedroom With Juliet Balcony Offering Fantastic Views
- Bi Fold Doors Leading Out To Recently Landscaped Rear Garden
- South Facing Rear Garden

Offers Over £390,000 Freehold

Local Authority
Council Tax Band C
EPC Rating C

Greenfield Close, Eccles, Aylesford, ME20

Approximate Area = 1001 sq ft / 92.9 sq m
Outbuilding = 341 sq ft / 31.6 sq m
Total = 1342 sq ft / 124.5 sq m
For identification only - Not to scale



 Floor plan produced in accordance with RICS Property Measurement Standards incorporating International Property Measurement Standards (IPMS2 Residential). © nichecom 2024. Produced for Simon Miller & Company. REF: 1087688

Mailing Office
777 London Road, Larkfield, Aylesford,
Kent, ME20 6DE

Contact
01732 875706
larkfieldsales@simonmiller.co.uk
<https://simonmiller.co.uk/>

Agents Note: Whilst every care has been taken to prepare these particulars, they are for guidance purposes only. All measurements are approximate and for general guidance purposes only and whilst every care has been taken to ensure accuracy, they should not be relied upon and potential buyers/tenants are advised to recheck the measurements.