

Chestnut Close

Kings Hill, West Malling ME19 4FP

- A Bryant Designed Four Bedroom Detached Family Home
- Situated on the Popular PHASE 1 part of Kings Hill
- Detached Double Garage with Extra Parking/Driveway
- Corner Plot Position
- Front and Rear Gardens
- Close to local Amenities
- GUIDE PRICE: £650,000-£675,000

Guide Price £650,000 Freehold

Local Authority
Council Tax Band G
EPC Rating C



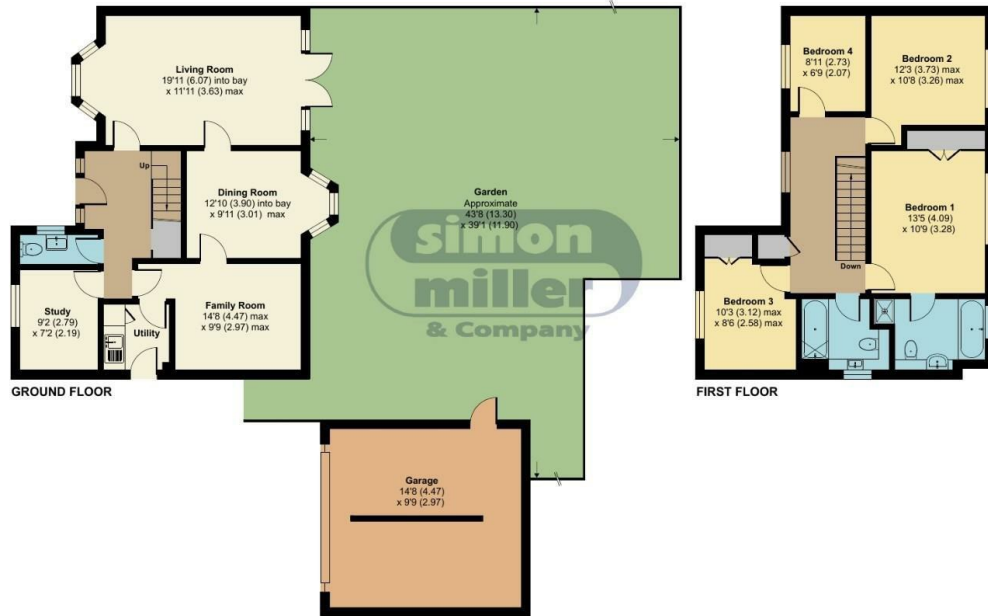
Chestnut Close, Kings Hill, West Malling, ME19

Approximate Area = 1394 sq ft / 129.5 sq m

Garage = 291 sq ft / 27 sq m

Total = 1685 sq ft / 156.5 sq m

For identification only - Not to scale



Floor plan produced in accordance with RICS Property Measurement Standards incorporating International Property Measurement Standards (IPMS2 Residential). © rnichecom 2024. Produced for Simon Miller & Company. REF: 1082728

Malling Office

777 London Road, Larkfield, Aylesford,
Kent, ME20 6DE

Contact

01732 875706
larkfieldsales@simonmiller.co.uk
<https://simonmiller.co.uk/>

Agents Note: Whilst every care has been taken to prepare these particulars, they are for guidance purposes only. All measurements are approximate and for general guidance purposes only and whilst every care has been taken to ensure accuracy, they should not be relied upon and potential buyers/tenants are advised to recheck the measurements.

