



## Swallow Road

Larkfield, Aylesford ME20 6PZ

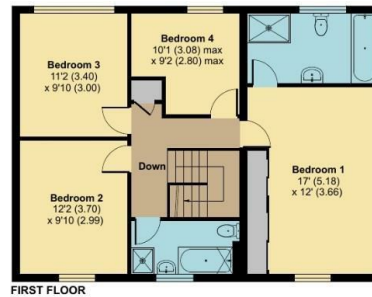
- Extended Four Bedroom Family Home
- SOUTH Facing Rear Garden
- Recently Fitted Modern Open Plan Kitchen / Diner
- All Double Bedrooms
- Over 1900 SqFt Of Accommodation
- Three Reception Rooms
- Double Garage
- Master Bedroom With En Suite

**Offers In Excess Of £480,000 Freehold**

Local Authority  
Council Tax Band D  
EPC Rating D

## Swallow Road, Larkfield, Aylesford, ME20

Approximate Area = 1633 sq ft / 151.7 sq m  
Garage = 304 sq ft / 28.2 sq m  
Total = 1937 sq ft / 179.9 sq m  
For identification only - Not to scale



Floor plan produced in accordance with RICS Property Measurement Standards incorporating International Property Measurement Standards (IPMS2 Residential). © nichecom 2024. Produced for Simon Miller & Company. REF: 1078305

### Mailing Office

777 London Road, Larkfield, Aylesford,  
Kent, ME20 6DE

### Contact

01732 875706  
larkfieldsales@simonmiller.co.uk  
<https://simonmiller.co.uk/>

Agents Note: Whilst every care has been taken to prepare these particulars, they are for guidance purposes only. All measurements are approximate and for general guidance purposes only and whilst every care has been taken to ensure accuracy, they should not be relied upon and potential buyers/tenants are advised to recheck the measurements.

