



Lunsford Lane

Larkfield, Aylesford ME20 6HP

- Extended Four Bedroom Semi Detached Family Home
- 100Ft Rear Garden
- Potential To Extend STPP
- GUIDE PRICE £400,000 - £425,000
- Well Appointed Living Room
- Large Private Driveway And Garage
- FOUR Double Bedrooms

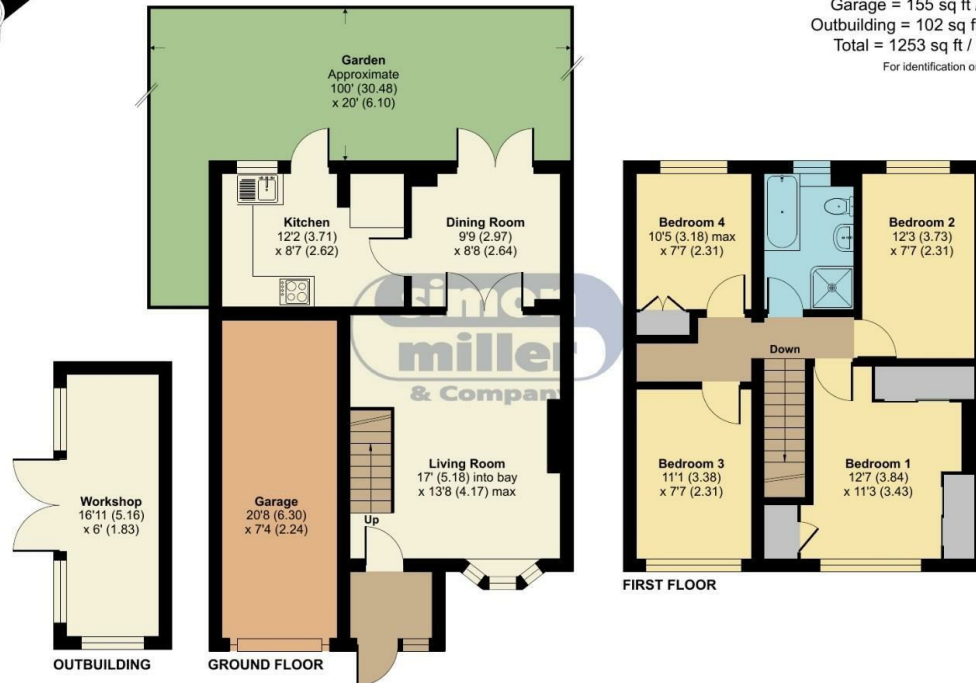
Price Guide £400,000 Freehold

Local Authority
Council Tax Band E
EPC Rating D



Lunsford Lane, Larkfield, Aylesford, ME20

Approximate Area = 996 sq ft / 92.5 sq m
Garage = 155 sq ft / 14.3 sq m
Outbuilding = 102 sq ft / 9.4 sq m
Total = 1253 sq ft / 116.2 sq m
For identification only - Not to scale



 Floor plan produced in accordance with RICS Property Measurement Standards incorporating International Property Measurement Standards (IPMS2 Residential). © nichecom 2024. Produced for Simon Miller & Company. REF: 1075917

Mailing Office

777 London Road, Larkfield, Aylesford,
Kent, ME20 6DE

Contact

01732 875706
larkfieldsales@simonmiller.co.uk
<https://simonmiller.co.uk/>

Agents Note: Whilst every care has been taken to prepare these particulars, they are for guidance purposes only. All measurements are approximate and for general guidance purposes only and whilst every care has been taken to ensure accuracy, they should not be relied upon and potential buyers/tenants are advised to recheck the measurements.

