



Heron Road

Larkfield, Aylesford ME20 6JF

- Large Corner Plot
- Four Good Sized Bedrooms
- Garage And Driveway
- Within Close Proximity Of Amenities
- Two Reception Rooms
- Conservatory
- Popular 'Birds' Development
- Ready To View NOW

O.I.R.O £385,000 Freehold

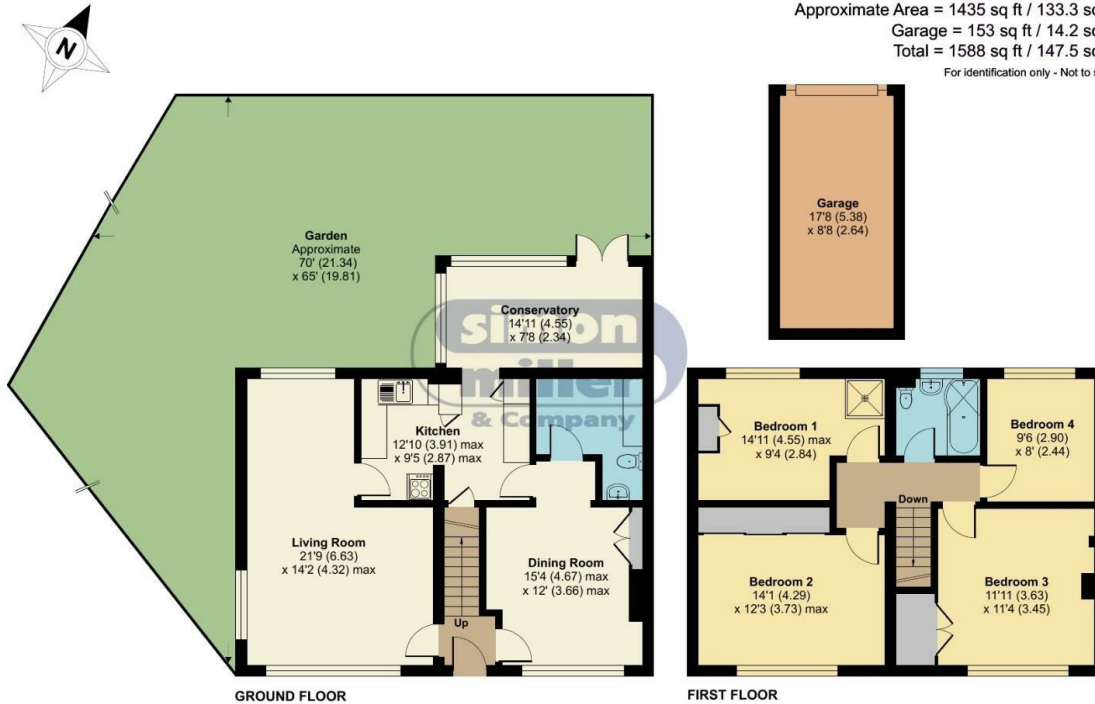


Local Authority
Council Tax Band D
EPC Rating D

Heron Road, Larkfield, Aylesford, ME20

Approximate Area = 1435 sq ft / 133.3 sq m
Garage = 153 sq ft / 14.2 sq m
Total = 1588 sq ft / 147.5 sq m

For identification only - Not to scale



Floor plan produced in accordance with RICS Property Measurement Standards incorporating International Property Measurement Standards (IPMS2 Residential). © nichecom 2023. Produced for Simon Miller & Company. REF: 1003063

Malling Office

777 London Road, Larkfield, Aylesford,
Kent, ME20 6DE

Contact

01732 875706
larkfieldsales@simonmiller.co.uk
<https://simonmiller.co.uk/>

Agents Note: Whilst every care has been taken to prepare these particulars, they are for guidance purposes only. All measurements are approximate and for general guidance purposes only and whilst every care has been taken to ensure accuracy, they should not be relied upon and potential buyers/tenants are advised to recheck the measurements.

