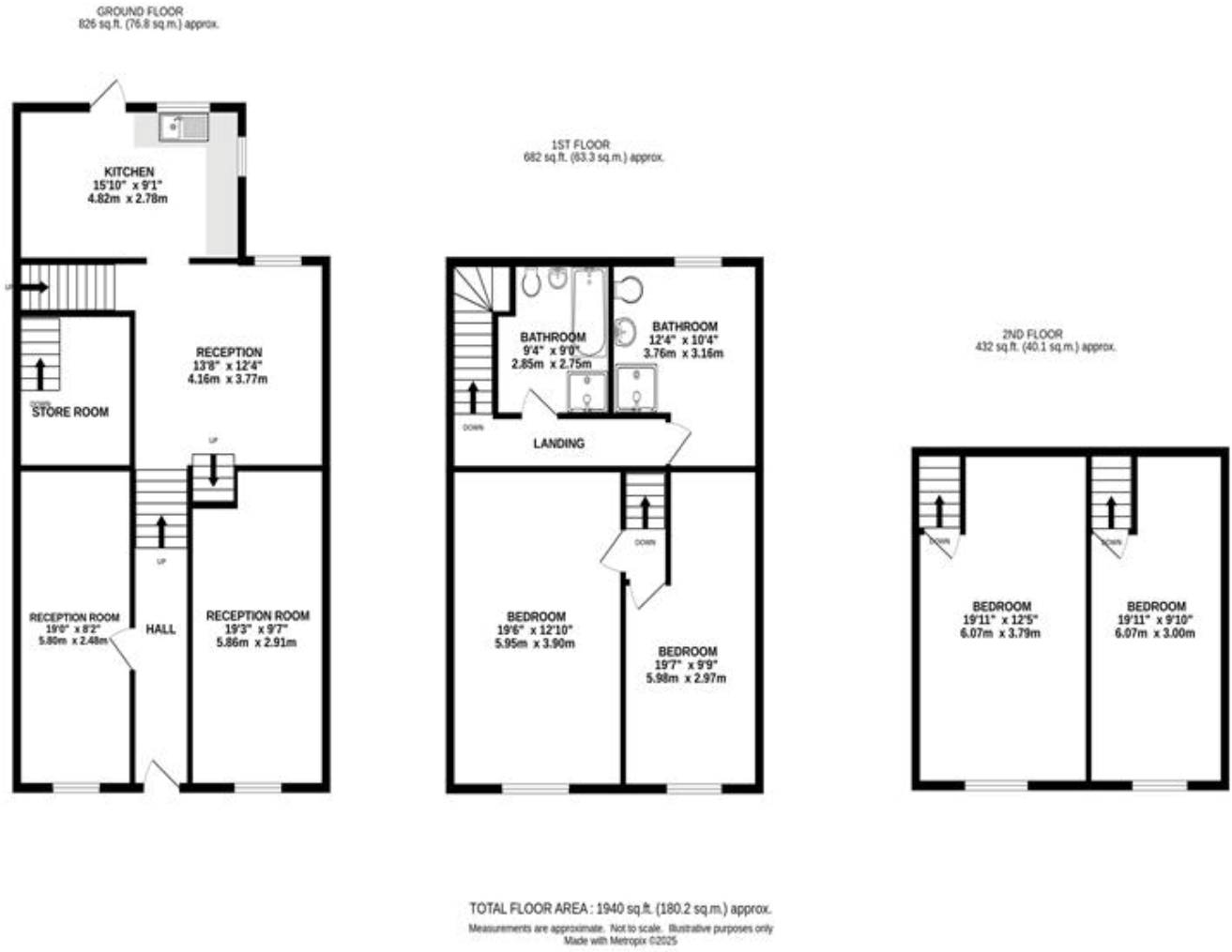


**143 MARKET STREET**  
Chapel-En-Le-Frith  
**£180,000**



**NOTICE**  
Gascoigne Halman for themselves and for the vendors or lessors of this property whose agents they are give notice that: (i) the particulars are set out as a general outline only for the guidance of intending purchasers or lessees, and do not constitute, nor constitute part of, an offer or contract; (ii) all descriptions, dimensions, references to condition and necessary permissions for use and occupation, and other details are given in good faith and are believed to be correct but any intending purchasers or tenants should not rely on them as statements or representations of fact but must satisfy themselves by inspection or otherwise as to the correctness of each of them; (iii) no person in the employment of Gascoigne Halman has any authority to make or give any representation or warranty whatever in relation to this property.

THE AREAS LEADING ESTATE AGENCY

Chapel-En-Le-Frith  
27 Market Street, CHAPEL-EN-LE-FRITH, High Peak SK23 0HP  
01298 813577 chapel@gascoignehalman.co.uk

gascoignehalman.co.uk



**GASCOIGNE HALMAN**

Situated on Market Street in Chapel-En-Le-Frith. This old-style terraced house boasts a total of 4 bedrooms, 2 bathrooms, and 3 reception rooms, offering ample and versatile space.



- Stone Built Terrace
- Four Bedrooms
- Three Reception Rooms
- Garden to Rear

- Spacious Rooms Throughout
- Two Bathrooms
- Cellars

**£180,000**

**143 MARKET STREET**

Chapel-En-Le-Frith



#### DESCRIPTION

In a little more detail, the accommodation on offer comprises a central entrance hall with a reception room to each side. There are steps up to the third reception room which opens into the kitchen, has two staircases leading to the upper levels and a useful storage room with staircase leading down to the cellar. One upper level has two bedrooms looking out to the front and two separate bathrooms. The other level has two further bedrooms. All bedrooms are comfortable double rooms. Externally there is a garden to the rear with stone paved patio seating area and lawned garden enclosed by timber fencing.

#### LOCATION

Chapel-en-le-Frith, known as 'The Capital of the Peak' nestles in an upland valley in the High Peak and is surrounded by dramatic landscape of gritstone ridges and shapely hills. The town takes its name from a small chapel built in 1225 by the keepers of the Royal Forest that is now the Church of St Thomas Becket, where 1,500 Scottish soldiers were imprisoned during the Civil War. The historic town centre also features a traditional marketplace which still has its original renowned stocks which the local cafe takes its name. A common phrase you here many resident say is "We are so lucky to live here" even after living in the town for decades. That is further, solid evidence, if ever it was needed that Chapel-en-le-Frith and its

surrounding towns and villages are an excellent place to set up home.

#### DIRECTIONS

Sat Nav: SK23 0NT

#### TENURE

FREEHOLD Subject to Verification By Solicitors

#### SERVICES (NOT TESTED)

Not Tested

#### LOCAL AUTHORITY

High Peak Borough Council

#### VIEWING

Strictly By Appointment Via the Agents

TWENTY NETWORKED OFFICES THROUGHOUT CHESHIRE, SOUTH MANCHESTER & THE HIGH PEAK



gascoignehalman.co.uk

**GASCOIGNE HALMAN**