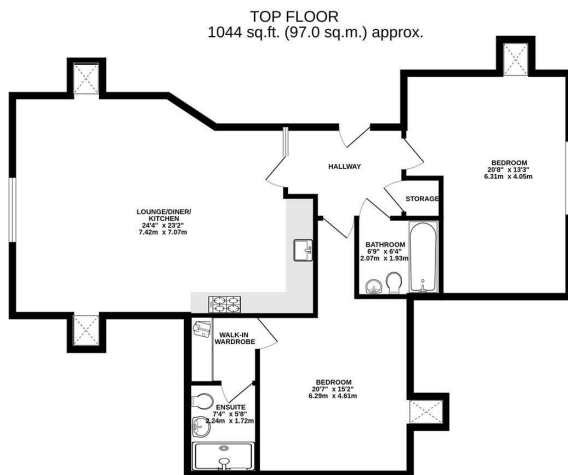




Keith  
Ashton

The Galleries, Warley  
Brentwood





Guide Price £375,000 - £400,000



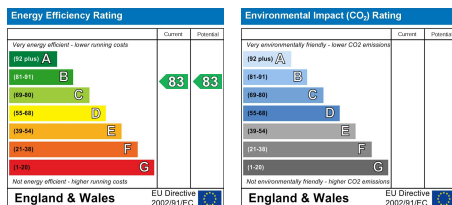
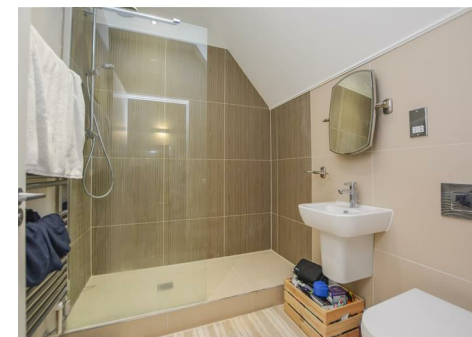
## 7 Rose Court The Galleries, Warley, Brentwood, CM14 5GJ

**\*\*Guide Price £375,000 - £400,000\*\*** We are delighted to present this impressive, unoverlooked top-floor penthouse apartment with skyline views in Rose Court, part of the award-winning Galleries Development, ideally situated within walking distance of Brentwood's Mainline Station and vibrant town centre.

Offered with no onward chain, this beautifully appointed home welcomes you with a spacious hallway leading to a lovely open-plan kitchen and living area. The stylish fitted kitchen features gloss wall and base units complemented by a range of fully integrated appliances, creating a sleek and contemporary feel.

There are two generous double bedrooms, with the principal bedroom boasting a walk-in wardrobe and a luxurious ensuite shower room. A pristine family bathroom with a modern white suite completes the accommodation.

The apartment benefits from a secure entry system and a full concierge service. Externally, Rose Court is surrounded by impeccably maintained communal gardens, and this property enjoys the advantage of two allocated parking spaces conveniently located within 50ft of the front door.



### SERVICES:

Local Authority: Brentwood  
Council tax band: E  
Post code: CM14 5GJ

### VIEWING:

Strictly by prior arrangement with Keith Ashton Estate Agents

### OPENING HOURS:

Monday to Friday: 8.45AM - 6.30PM | Saturdays: 9AM - 5.30PM | Sundays: 10AM - 2PM

**MORTGAGE INFORMATION:** We offer the additional facility of an in-house Independent Financial Adviser who will access all mortgage lenders with the purpose of providing you with the benefit of choice. For quotations or comparables please call 01277 260858 or visit our interactive website at [www.mortgagebusiness.net](http://www.mortgagebusiness.net)



We the Agent have not tested any apparatus, fittings or services for this property. The plot size is intended merely as a guide and has not been officially measured or verified by the Agent. Photographs are for illustration only and may depict items which are not for sale or included in the sale of the property. As part of the service we offer we may recommend ancillary services to you which we believe may help you with your property transaction. We wish to make you aware, that should you decide to use these services we will receive a referral fee. For full and detailed information please visit 'terms and conditions' on our website [www.keithashton.co.uk](http://www.keithashton.co.uk)

Brentwood  
Tel. 01277 260858

Village Office  
Tel. 01277 375757

Lettings Office  
Tel. 01277 202200

Explore more @ [www.keithashton.co.uk](http://www.keithashton.co.uk)

