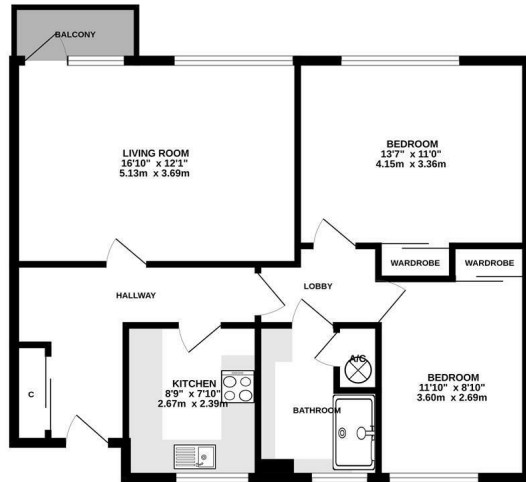




Keith
Ashton

Sawyers Hall Lane,
Brentwood

FIRST FLOOR
739 sq.ft. (68.7 sq.m.) approx.



TOTAL FLOOR AREA: 739 sq.ft. (68.7 sq.m.) approx.
Measurements are approximate. Not to scale. Illustrative purposes only.
(Scale with bearings (N/S/E/W))



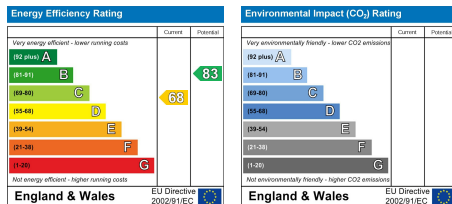
10 Limes Court Sawyers Hall Lane, Brentwood, CM15 9BW

Ideally situated in a sought-after central location, this property offers convenient access to a variety of local shops, restaurants, and amenities—making it an excellent choice for first-time buyers. With superb transport links, commuting to London is effortless, while Brentwood's vibrant community provides an array of leisure facilities, beautiful parks, and well-regarded schools, ensuring an exceptional living environment.

In need of some modernisation, the apartment features two generously sized bedrooms and a bright, airy reception room that opens onto a balcony, perfect for relaxation. The kitchen includes eye and base-level units, ample worktop space, and room for appliances, whilst a bathroom completes this space. Thoughtfully designed to maximise space and natural light, the layout creates a warm and welcoming atmosphere throughout.

Additional benefits include residents' parking, a private garage, and access to well-maintained communal gardens, offering both convenience and outdoor space.

£315,000



SERVICES:

Local Authority: Brentwood
Council tax band: C
Post code: CM15 9BW

VIEWING:

Strictly by prior arrangement with Keith Ashton Estate Agents

OPENING HOURS:

Monday to Friday: 8.45AM - 6.30PM | Saturdays: 9AM - 5.30PM | Sundays: 10AM - 2PM

MORTGAGE INFORMATION:

We offer the additional facility of an in-house Independent Financial Adviser who will access all mortgage lenders with the purpose of providing you with the benefit of choice. For quotations or comparables please call 01277 260858 or visit our interactive website at www.mortgagebusiness.net



We the Agent have not tested any apparatus, fittings or services for this property. The plot size is intended merely as a guide and has not been officially measured or verified by the Agent. Photographs are for illustration only and may depict items which are not for sale or included in the sale of the property. As part of the service we offer we may recommend ancillary services to you which we believe may help you with your property transaction. We wish to make you aware, that should you decide to use these services we will receive a referral fee. For full and detailed information please visit 'terms and conditions' on our website www.keithashton.co.uk

Brentwood
Tel. 01277 260858

Village Office
Tel. 01277 375757

Lettings Office
Tel. 01277 202200

Explore more @ www.keithashton.co.uk

