



**Keith  
Ashton**

Lascelles Close, Pilgrims Hatch  
Brentwood





## I LASCELLES CLOSE

Pilgrims Hatch Brentwood, CM15 9RN

Guide Price £375,000 - £400,000

**\*\*Guide Price £375,000 - £400,000\*\*** We are pleased to present this three-bedroom end-of-terrace home, ideally situated in a quiet cul-de-sac overlooking a charming green in the sought-after area of Pilgrims Hatch. Conveniently located within close reach of local shops and amenities, and just a short drive from Brentwood High Street and train station, this property offers fantastic potential to become your next family home.

- THREE BEDROOM FAMILY HOME
- SPACIOUS LOUNGE
- DETACHED GARAGE
- OVERLOOKING THE GREEN
- CUL-DE-SAC LOCATION
- LOCAL SHOPS & SERVICES NEARBY
- SHORT DRIVE TO BRENTWOOD
- POPULAR PILGRIMS HATCH AREA





## Description

The internal layout begins with a welcoming hallway leading into a spacious lounge, bathed in natural light from large sliding doors that open onto the rear garden. The generously sized kitchen is well-equipped with eye and base level units, ample worktop space, and room for a dining table and chairs. An external door provides convenient access to the side and rear of the property.

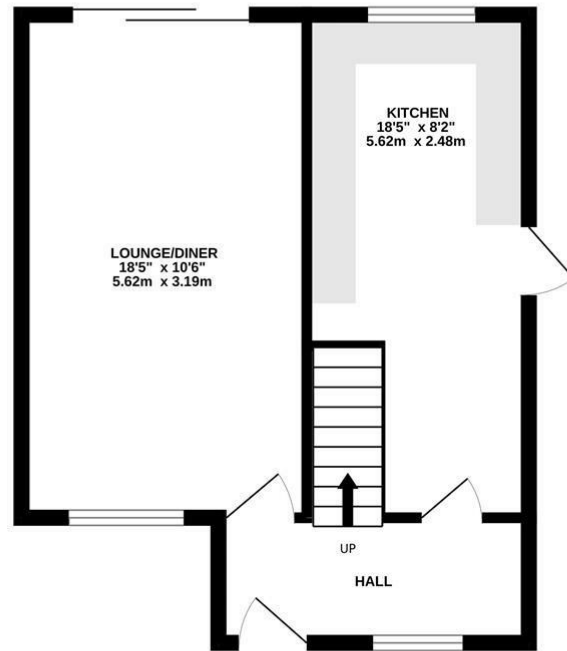
Ascending to the first floor, the principal bedroom is a spacious double, positioned at the front of the home. Two further well-proportioned bedrooms and a modern shower room complete the internal accommodation.

Outside, the rear garden features a block-paved seating area, perfect for outdoor relaxation, with the remainder laid to lawn and bordered by mature shrubs for added privacy. A back gate leads out to the detached garage which is accessed via a service road. To the front, a small garden enhances the property's kerb appeal.

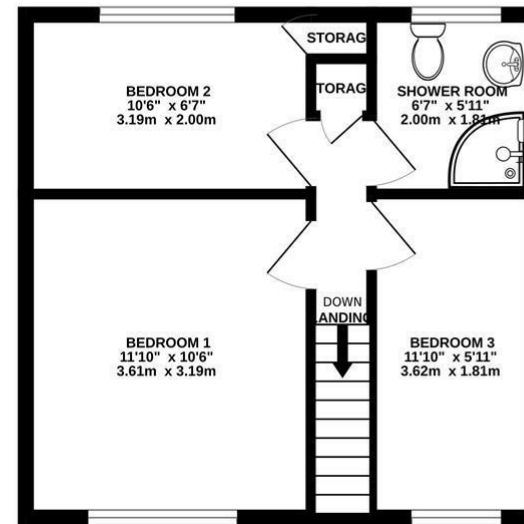




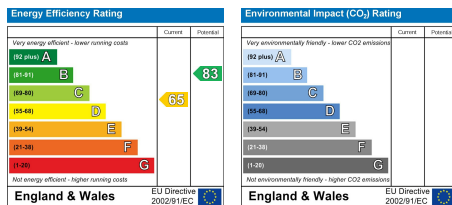
GROUND FLOOR  
395 sq.ft. (36.7 sq.m.) approx.



1ST FLOOR  
343 sq.ft. (31.9 sq.m.) approx.



TOTAL FLOOR AREA : 739 sq.ft. (68.6 sq.m.) approx.  
Measurements are approximate. Not to scale. Illustrative purposes only  
Made with Metropix ©2025



#### SERVICES:

Local Authority: Brentwood  
Council tax band: C  
Post code: CM15 9RN

#### VIEWING:

Strictly by prior arrangement with Keith Ashton Estate Agents

#### OPENING HOURS:

Monday to Friday: 8.45AM - 6.30PM | Saturdays: 9AM - 5.30PM | Sundays: 10AM - 2PM

**MORTGAGE INFORMATION:** We offer the additional facility of an in-house Independent Financial Adviser who will access all mortgage lenders with the purpose of providing you with the benefit of choice. For quotations or comparables please call 01277 260858 or visit our interactive website at [www.mortgagebusiness.net](http://www.mortgagebusiness.net)



We the Agent have not tested any apparatus, fittings or services for this property. The plot size is intended merely as a guide and has not been officially measured or verified by the Agent. Photographs are for illustration only and may depict items which are not for sale or included in the sale of the property. As part of the service we offer we may recommend ancillary services to you which we believe may help you with your property transaction. We wish to make you aware, that should you decide to use these services we will receive a referral fee. For full and detailed information please visit 'terms and conditions' on our website [www.keithashton.co.uk](http://www.keithashton.co.uk)

Brentwood  
Tel. 01277 260858

Village Office  
Tel. 01277 375757

Lettings Office  
Tel. 01277 202200

Explore more @ [www.keithashton.co.uk](http://www.keithashton.co.uk)

