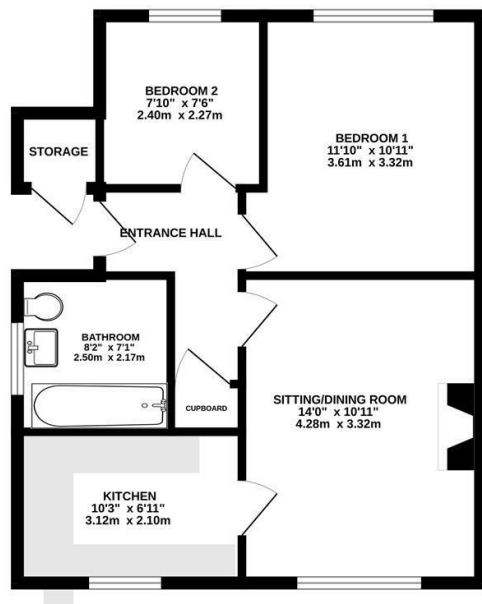




Keith Ashton

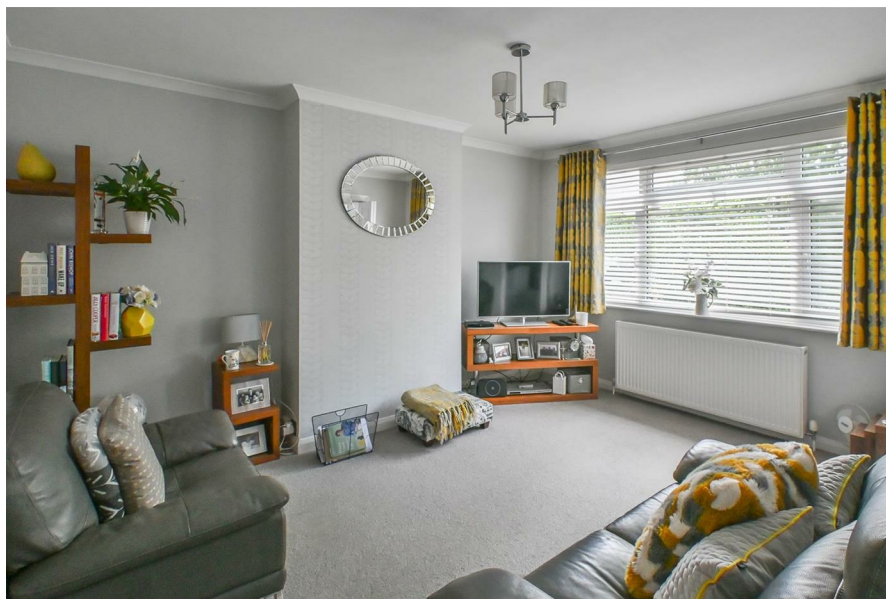
Doddinghurst Road,
Brentwood

GROUND FLOOR
509 sq.ft. (47.3 sq.m.) approx.



TOTAL FLOOR AREA: 509 sq.ft. (47.3 sq.m.) approx.
Measurements are approximate. Not to scale. Illustrative purposes only.
Made with Metreapp 1/2020

Guide Price £290,000

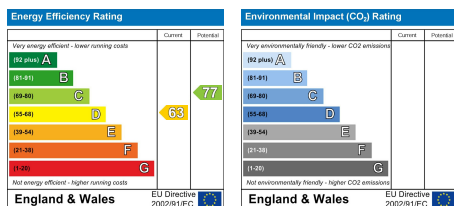


4 Rushdene Court Doddinghurst Road, Brentwood, CM15 9ER

We are delighted to bring to market this well-presented ground-floor maisonette, ideally located less than a mile from Brentwood High Street, with its range of shops, bars, and restaurants.

The internal accommodation comprises a comfortable sitting room, a sleek modern kitchen, two well-proportioned bedrooms, and a contemporary bathroom. Externally, the property enjoys both front and rear gardens, offering private outdoor spaces ideal for relaxation.

With an extremely long lease, no service charges, and just 1.5 miles from Brentwood Station—providing fast and convenient links into London and beyond—this property is perfectly suited to first-time buyers, investors, and commuters alike.



SERVICES:

Local Authority: Brentwood
Council tax band: B
Post code: CM15 9ER

VIEWING:

Strictly by prior arrangement with Keith Ashton Estate Agents

OPENING HOURS:

Monday to Friday: 8.45AM - 6.30PM | Saturdays: 9AM - 5.30PM | Sundays: 10AM - 2PM

MORTGAGE INFORMATION:

We offer the additional facility of an in-house Independent Financial Adviser who will access all mortgage lenders with the purpose of providing you with the benefit of choice. For quotations or comparables please call 01277 260858 or visit our interactive website at www.mortgagebusiness.net



We the Agent have not tested any apparatus, fittings or services for this property. The plot size is intended merely as a guide and has not been officially measured or verified by the Agent. Photographs are for illustration only and may depict items which are not for sale or included in the sale of the property. As part of the service we offer we may recommend ancillary services to you which we believe may help you with your property transaction. We wish to make you aware, that should you decide to use these services we will receive a referral fee. For full and detailed information please visit 'terms and conditions' on our website www.keithashton.co.uk

Brentwood
Tel. 01277 260858

Village Office
Tel. 01277 375757

Lettings Office
Tel. 01277 202200

Explore more @ www.keithashton.co.uk

