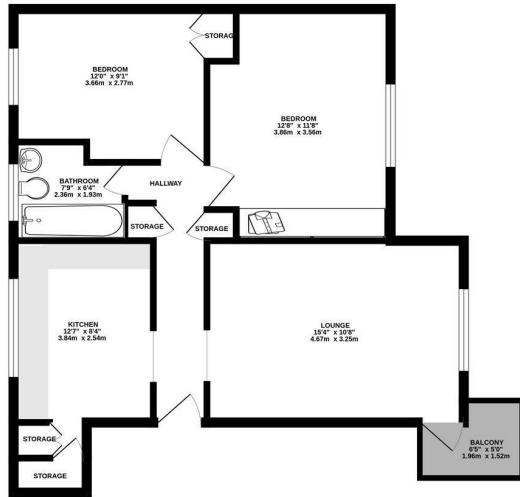




TOP FLOOR



Measurements are approximate. Not to scale. Illustrative purposes only. Made with Merge 3D.

£275,000

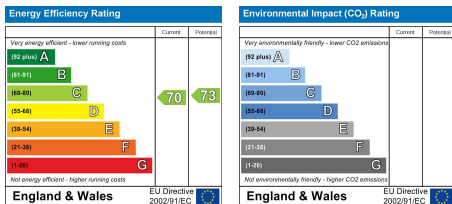


50 St Stephens Crecent, Hutton, CM13 2AX

We are delighted to present this beautifully spacious top-floor apartment, perfectly positioned within easy reach of both King Georges Playing Fields and Thorndon Country Park.

Well-presented throughout, the property offers a well-appointed kitchen, a generous lounge with access to a private balcony, two double bedrooms, and a contemporary family bathroom. Externally, the home benefits from a delightful rear garden — a rare and valuable feature for an apartment of this kind.

Ideally situated just 1.5 miles from Brentwood Station, the property provides excellent transport links into London and beyond. With highly regarded schools nearby, this home effortlessly combines comfort, style, and convenience — making it an ideal choice for professionals, couples, or small families alike.



SERVICES:

Local Authority: Hutton
Council tax band: B
Post code: CM13 2AX

VIEWING:

Strictly by prior arrangement with Keith Ashton Estate Agents

OPENING HOURS:

Monday to Friday: 8.45AM - 6.30PM | Saturdays: 9AM - 5.30PM | Sundays: 10AM - 2PM

MORTGAGE INFORMATION: We offer the additional facility of an in-house Independent Financial Adviser who will access all mortgage lenders with the purpose of providing you with the benefit of choice. For quotations or comparables please call 01277 260858 or visit our interactive website at www.mortgagebusiness.net



We the Agent have not tested any apparatus, fittings or services for this property. The plot size is intended merely as a guide and has not been officially measured or verified by the Agent. Photographs are for illustration only and may depict items which are not for sale or included in the sale of the property. As part of the service we offer we may recommend ancillary services to you which we believe may help you with your property transaction. We wish to make you aware, that should you decide to use these services we will receive a referral fee. For full and detailed information please visit 'terms and conditions' on our website www.keithashton.co.uk

Brentwood
Tel. 01277 260858

Village Office
Tel. 01277 375757

Lettings Office
Tel. 01277 202200

Explore more @ www.keithashton.co.uk

