



Keith  
Ashton

Weald Road, South Weald  
Brentwood





## 49 TOWER COTTAGES WEALD ROAD

South Weald Brentwood, CM14 5QJ

Guide Price £500,000 - £525,000

**\*\*Guide Price £500,000 - £525,000\*\*** We are delighted to present this enchanting Victorian residence, perfectly positioned in the picturesque village of South Weald. Impeccably maintained and thoughtfully styled throughout, the property boasts a welcoming and cosy lounge, three double bedrooms and a beautifully appointed kitchen and bathroom.

Ideally situated within walking distance of the highly regarded St. Peter's Primary School and enjoying a delightful backdrop onto Weald Park, this home offers both charm and convenience in equal measure.

- VICTORIAN FAMILY HOME
- BEAUTIFULLY PRESENTED THROUGHOUT
- THREE DOUBLE BEDROOMS
- CLOSE PROXIMITY OF ST PETERS PRIMARY SCHOOL
- SHORT DRIVE TO BRENTWOOD STATION
- EASY ACCESS TO M25/A12
- COURTYARD STYLE GARDEN
- BACKS ONTO WEALD PARK





## Description

The property opens into a welcoming entrance hall, leading to a cosy front lounge featuring a charming bay window and a wood-burning stove, creating a warm and inviting atmosphere. To the rear, a beautifully appointed kitchen/diner boasts a range of eye and base-level cabinetry, quartz worktops, and a classic butler sink, with a door opening directly onto the rear garden. The ground floor is completed by a stunning contemporary bathroom and a separate WC.

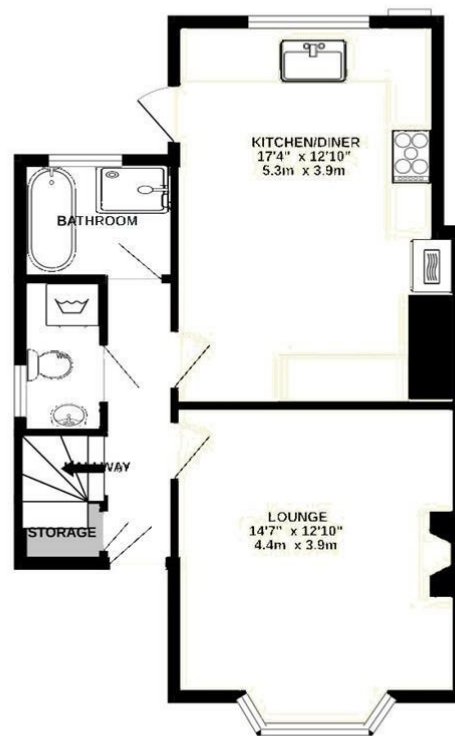
On the first floor, the landing provides access to three generous double bedrooms, each offering built-in storage for convenience and practicality.

Externally, the rear garden is designed in a stylish courtyard layout, offering lovely views of St. Peter's Church and backing onto the scenic Weald Park, blending tranquillity with charm.

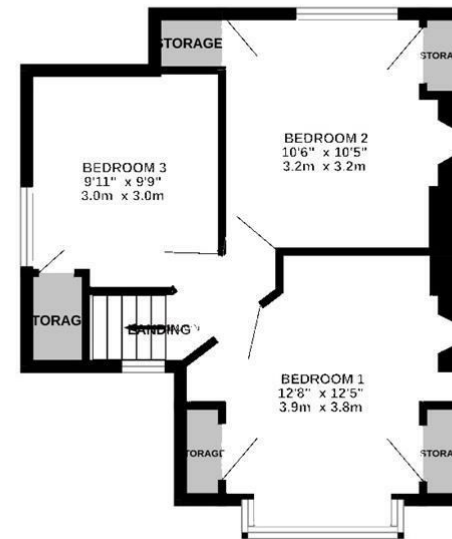




GROUND FLOOR  
500 sq.ft. (46.5 sq.m.) approx.

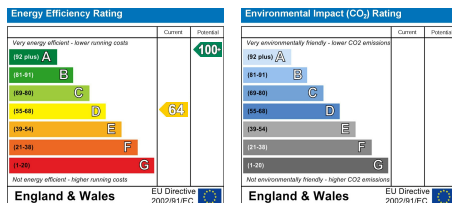


1ST FLOOR  
370 sq.ft. (34.4 sq.m.) approx.



TOTAL FLOOR AREA: 871 sq.ft. (80.9 sq.m.) approx.

Whilst every attempt has been made to ensure the accuracy of the floorplan contained here, measurements of doors, windows, rooms and any other items are approximate and no responsibility is taken for any error, omission or mis-statement. This plan is for illustrative purposes only and should be used as such by any prospective purchaser. The services, systems and appliances shown have not been tested and no guarantee as to their operability or efficiency can be given.  
Made with Metropix ©2025



### SERVICES:

Local Authority: Brentwood  
Council tax band: C  
Post code: CM14 5QJ

### VIEWING:

Strictly by prior arrangement with Keith Ashton Estate Agents

### OPENING HOURS:

Monday to Friday: 8.45AM - 6.30PM | Saturdays: 9AM - 5.30PM | Sundays: 10AM - 2PM

**MORTGAGE INFORMATION:** We offer the additional facility of an in-house Independent Financial Adviser who will access all mortgage lenders with the purpose of providing you with the benefit of choice. For quotations or comparables please call 01277 260858 or visit our interactive website at [www.mortgagebusiness.net](http://www.mortgagebusiness.net)



We the Agent have not tested any apparatus, fittings or services for this property. The plot size is intended merely as a guide and has not been officially measured or verified by the Agent. Photographs are for illustration only and may depict items which are not for sale or included in the sale of the property. As part of the service we offer we may recommend ancillary services to you which we believe may help you with your property transaction. We wish to make you aware, that should you decide to use these services we will receive a referral fee. For full and detailed information please visit 'terms and conditions' on our website [www.keithashton.co.uk](http://www.keithashton.co.uk)

Brentwood  
Tel. 01277 260858

Village Office  
Tel. 01277 375757

Lettings Office  
Tel. 01277 202200

Explore more @ [www.keithashton.co.uk](http://www.keithashton.co.uk)

