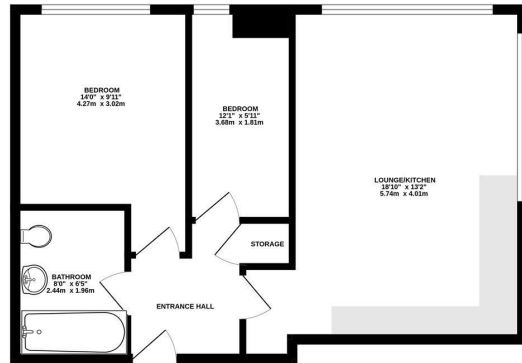




Keith
Ashton

Hubert Road,
Brentwood

GROUND FLOOR
560 sq.ft. (52.0 sq.m.) approx.



TOTAL FLOOR AREA: 560 sq.ft. (52.0 sq.m.) approx.
Measurements are approximate. Not to scale. Specified purposes only.
Made with Mergin 3D

Offers In Excess Of £300,000



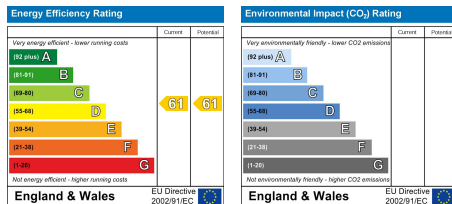
130 Regent House Hubert Road, Brentwood, CM14 4WN

We are delighted to present this beautifully appointed top-floor, two-bedroom apartment, ideally located just a short stroll from Brentwood High Street and the mainline railway station—offering fast and direct access into central London.

Set within a modern, well-maintained development, the property enjoys a range of sought-after amenities including a concierge service, secure entry phone system, and communal parking—ensuring both comfort and peace of mind.

Positioned on a desirable corner plot, the apartment boasts a bright and spacious open-plan kitchen/living area, enhanced by dual-aspect windows that flood the space with natural light and offer sweeping panoramic views. The contemporary kitchen features sleek eye and base-level units, generous worktop space, and a range of integrated appliances—perfect for modern living. The accommodation comprises two well-proportioned bedrooms, while a stylish bathroom completes the interior with a clean and contemporary finish. Externally, this apartment has the added benefit of a purchased parking space.

Offered with No Onward Chain, this impressive home is ideal for professionals, first-time buyers, or investors looking for a prime Brentwood location.



SERVICES:

Local Authority: Brentwood
Council tax band: E
Post code: CM14 4WN

VIEWING:

Strictly by prior arrangement with Keith Ashton Estate Agents

OPENING HOURS:

Monday to Friday: 8.45AM - 6.30PM | Saturdays: 9AM - 5.30PM | Sundays: 10AM - 2PM

MORTGAGE INFORMATION:

We offer the additional facility of an in-house Independent Financial Adviser who will access all mortgage lenders with the purpose of providing you with the benefit of choice. For quotations or comparables please call 01277 260858 or visit our interactive website at www.mortgagebusiness.net



We the Agent have not tested any apparatus, fittings or services for this property. The plot size is intended merely as a guide and has not been officially measured or verified by the Agent. Photographs are for illustration only and may depict items which are not for sale or included in the sale of the property. As part of the service we offer we may recommend ancillary services to you which we believe may help you with your property transaction. We wish to make you aware, that should you decide to use these services we will receive a referral fee. For full and detailed information please visit 'terms and conditions' on our website www.keithashton.co.uk

Brentwood
Tel. 01277 260858

Village Office
Tel. 01277 375757

Lettings Office
Tel. 01277 202200

Explore more @ www.keithashton.co.uk

