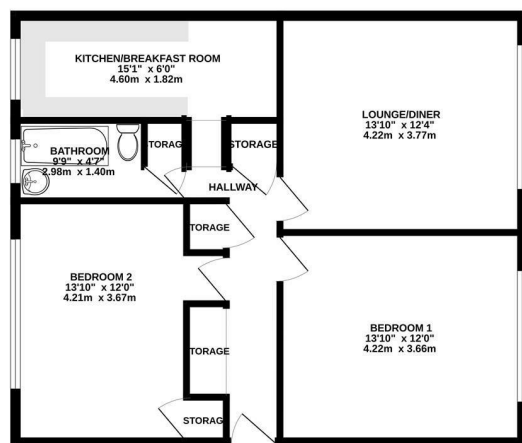




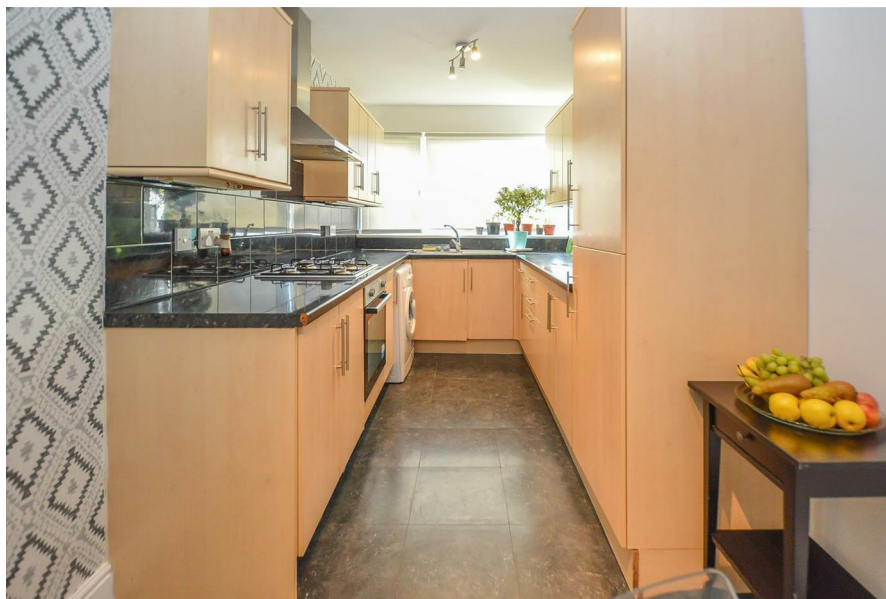
Keith
Ashton

Cameron Close, Warley
Brentwood

GROUND FLOOR
699 sq.ft. (65.0 sq.m.) approx.



TOTAL FLOOR AREA - 699 sq.ft. (65.0 sq.m.) approx.
Measurements are approximate. Not to scale. Dimensions given are only those with storage (G10).



7 Cawdor House Cameron Close, Warley, Brentwood, CM14 5BZ

We bring to market this two-bedroom, ground floor apartment, ideally located just minutes from Brentwood Station, offering excellent transport links into London and beyond.

Thoughtfully designed, this bright and spacious home is accessed via its own private entrance and features ample built-in storage throughout for added convenience. The generously sized lounge is bathed in natural light from a large window, creating a warm and inviting living space. The well-appointed kitchen offers a range of eye and base-level units, along with ample worktop space. Both double bedrooms are well-proportioned, providing plenty of room for furniture. A modern bathroom completes the internal accommodation. Externally, the property benefits from its own garage with parking space in front and is surrounded by well-maintained communal gardens, with woodland beyond.

Located less than a mile from Brentwood High Street and within close proximity to highly regarded schools, this apartment is perfectly positioned for both convenience and lifestyle.



Guide Price £267,000

SERVICES:

Local Authority: Brentwood
Council tax band: C
Post code: CM14 5BZ

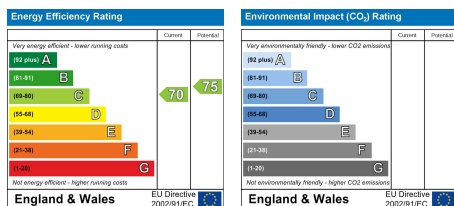
VIEWING:

Strictly by prior arrangement with Keith Ashton Estate Agents

OPENING HOURS:

Monday to Friday: 8.45AM - 6.30PM | Saturdays: 9AM - 5.30PM | Sundays: 10AM - 2PM

MORTGAGE INFORMATION: We offer the additional facility of an in-house Independent Financial Adviser who will access all mortgage lenders with the purpose of providing you with the benefit of choice. For quotations or comparables please call 01277 260858 or visit our interactive website at www.mortgagebusiness.net



We the Agent have not tested any apparatus, fittings or services for this property. The plot size is intended merely as a guide and has not been officially measured or verified by the Agent. Photographs are for illustration only and may depict items which are not for sale or included in the sale of the property. As part of the service we offer we may recommend ancillary services to you which we believe may help you with your property transaction. We wish to make you aware, that should you decide to use these services we will receive a referral fee. For full and detailed information please visit 'terms and conditions' on our website www.keithashton.co.uk

Brentwood
Tel. 01277 260858

Village Office
Tel. 01277 375757

Lettings Office
Tel. 01277 202200

Explore more @ www.keithashton.co.uk

