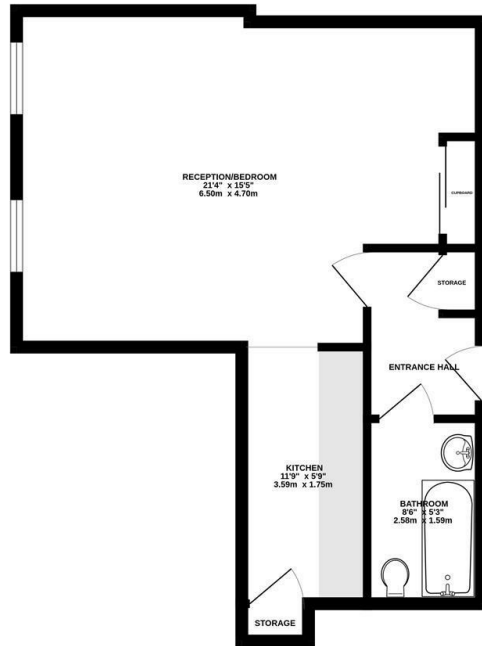




Keith
Ashton

8 Ingrave Road,
Brentwood

GROUND FLOOR
505 sq. ft. (46.9 sq. m.) approx.



TOTAL FLOOR AREA: 505 sq. ft. (46.9 sq. m.) approx.
Measurements are approximate. Not to scale. Illustrative purposes only.
Made with Metrepro CDS5



10 Ingrave House 8 Ingrave Road, Brentwood, CM15 8TG

We are delighted to present this beautifully appointed ground-floor studio apartment, offered with No Onward Chain. Situated within the sought-after Ingrave House development in the heart of Brentwood Town Centre, this immaculate home is perfect for first-time buyers seeking a prime location, just a short stroll from Brentwood Station.

Accessed via a secure communal entrance with an entry phone system, the building features a stylish reception area with both stairs and lifts serving all floors. Upon entering the apartment, you are welcomed by a well-designed entrance hall with a built-in storage cupboard. The open-plan living and bedroom area is bright and spacious, seamlessly flowing into a sleek, modern kitchen, complete with high-gloss cabinetry, integrated appliances, and a built-in utility cupboard with space for a washing machine. A contemporary bathroom, featuring elegant tiling and ceramic flooring, completes the home. Further benefits include a private allocated parking space and access to an impressive communal roof terrace, offering breathtaking views over Brentwood and the London skyline.

With 246 years remaining on the lease and annual charges of approximately £1,400, this property offers a fantastic combination of long-term security, modern convenience, and a highly desirable location.

Offers In Excess Of £240,000

SERVICES:

Local Authority: Brentwood
Council tax band: C
Post code: CM15 8TG

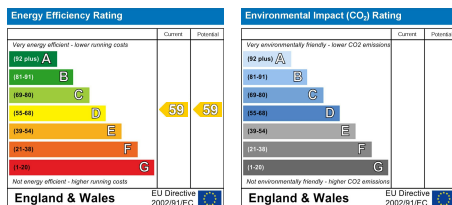
VIEWING:

Strictly by prior arrangement with Keith Ashton Estate Agents

OPENING HOURS:

Monday to Friday: 8.45AM - 6.30PM | Saturdays: 9AM - 5.30PM | Sundays: 10AM - 2PM

MORTGAGE INFORMATION: We offer the additional facility of an in-house Independent Financial Adviser who will access all mortgage lenders with the purpose of providing you with the benefit of choice. For quotations or comparables please call 01277 260858 or visit our interactive website at www.mortgagebusiness.net



We the Agent have not tested any apparatus, fittings or services for this property. The plot size is intended merely as a guide and has not been officially measured or verified by the Agent. Photographs are for illustration only and may depict items which are not for sale or included in the sale of the property. As part of the service we offer we may recommend ancillary services to you which we believe may help you with your property transaction. We wish to make you aware, that should you decide to use these services we will receive a referral fee. For full and detailed information please visit 'terms and conditions' on our website www.keithashton.co.uk

Brentwood
Tel. 01277 260858

Village Office
Tel. 01277 375757

Lettings Office
Tel. 01277 202200

Explore more @ www.keithashton.co.uk

