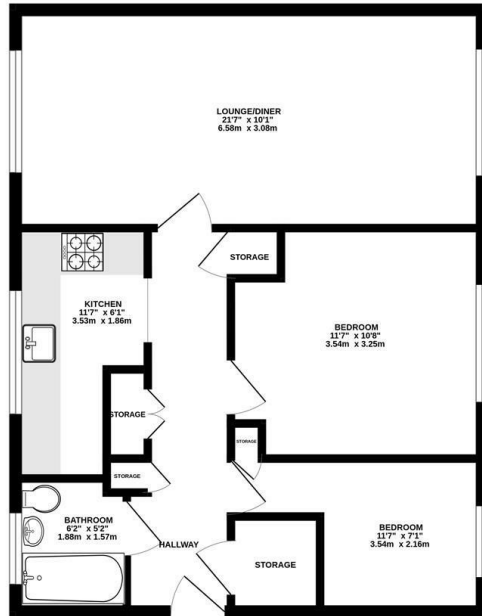




Keith
Ashton

Eagle Way,
Brentwood

TOP FLOOR
601 sq.ft. (55.8 sq.m.) approx.



TOTAL FLOOR AREA: 601 sq.ft. (55.8 sq.m.) approx.
Measurements are approximate. Not to scale. Illustrative purposes only.
Made with MyHome 1000



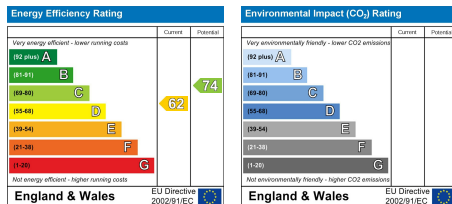
59 Thorndon Court Eagle Way, Brentwood, CM13 3BX

****Guide Price £240,000 - £250,000**** Situated in the popular Warley area of Brentwood, this top-floor apartment enjoys a prime location close to Thorndon Country Park, while being within easy reach of Brentwood High Street and the Mainline Railway Station. Boasting great views over the surrounding area, this home offers both convenience and tranquillity.

The well-designed interior begins with an entrance hallway featuring ample built-in storage. A bright and spacious lounge/diner benefits from dual-aspect windows, flooding the room with natural light. The kitchen is fitted with shaker-style wall and base units and ample worktop space. Two well-proportioned bedrooms and a modern bathroom complete the accommodation. Further highlights include well-maintained communal gardens, residents' parking, and a private garage in a nearby block.



Guide Price £240,000 - £250,000



SERVICES:

Local Authority: Brentwood
Council tax band: B
Post code: CM13 3BX

VIEWING:

Strictly by prior arrangement with Keith Ashton Estate Agents

OPENING HOURS:

Monday to Friday: 8.45AM - 6.30PM | Saturdays: 9AM - 5.30PM | Sundays: 10AM - 2PM

MORTGAGE INFORMATION:

We offer the additional facility of an in-house Independent Financial Adviser who will access all mortgage lenders with the purpose of providing you with the benefit of choice. For quotations or comparables please call 01277 260858 or visit our interactive website at www.mortgagebusiness.net



We the Agent have not tested any apparatus, fittings or services for this property. The plot size is intended merely as a guide and has not been officially measured or verified by the Agent. Photographs are for illustration only and may depict items which are not for sale or included in the sale of the property. As part of the service we offer we may recommend ancillary services to you which we believe may help you with your property transaction. We wish to make you aware, that should you decide to use these services we will receive a referral fee. For full and detailed information please visit 'terms and conditions' on our website www.keithashton.co.uk

Brentwood
Tel. 01277 260858

Village Office
Tel. 01277 375757

Lettings Office
Tel. 01277 202200

Explore more @ www.keithashton.co.uk

