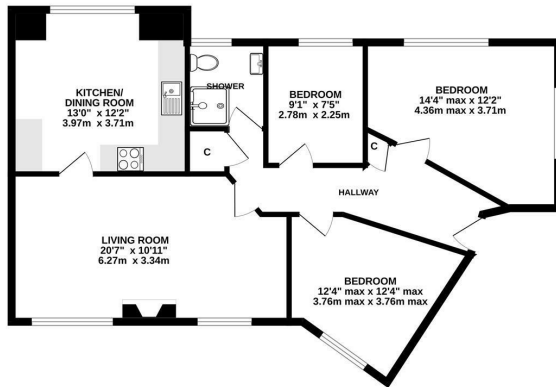




Keith
Ashton

Burland Road,
Brentwood

FIRST FLOOR
815 sq.ft. (75.7 sq.m.) approx.



TOTAL FLOOR AREA: 815 sq.ft. (75.7 sq.m.) approx.
Measurements are approximate. Not to scale. Reproduce properties only.
Made with Metagor G2025



6 Endways Court Burland Road, Brentwood, CM15 9AS

Offered with No Onward Chain, we are pleased to present this spacious first-floor apartment, ideally situated within easy reach of Brentwood High Street and highly regarded schools.

In need of some modernisation, the property offers a well-proportioned layout, beginning with an entrance hall that provides access to all rooms. The bright and airy living room benefits from two large windows, allowing for an abundance of natural light. The well-appointed kitchen features white eye and base level units, along with generous countertop space. The principal bedroom enjoys a dual-aspect outlook, while two further well-sized bedrooms and a shower room complete the accommodation.

Additionally, the apartment comes with its own garage and two parking permits. Conveniently located within a mile of Brentwood train station, offering direct Elizabeth Line services to London and beyond this property is an ideal buy to let with monthly rentals in the region of £1500.

SERVICES:

Local Authority: Brentwood
Council tax band: D
Post code: CM15 9AS

VIEWING:

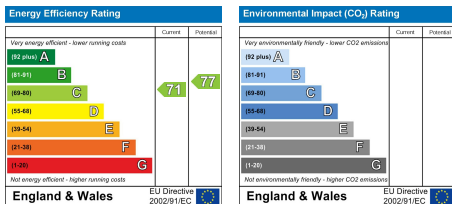
Strictly by prior arrangement with Keith Ashton Estate Agents

OPENING HOURS:

Monday to Friday: 8.45AM - 6.30PM | Saturdays: 9AM - 5.30PM | Sundays: 10AM - 2PM

MORTGAGE INFORMATION:

We offer the additional facility of an in-house Independent Financial Adviser who will access all mortgage lenders with the purpose of providing you with the benefit of choice. For quotations or comparables please call 01277 260858 or visit our interactive website at www.mortgagebusiness.net



We the Agent have not tested any apparatus, fittings or services for this property. The plot size is intended merely as a guide and has not been officially measured or verified by the Agent. Photographs are for illustration only and may depict items which are not for sale or included in the sale of the property. As part of the service we offer we may recommend ancillary services to you which we believe may help you with your property transaction. We wish to make you aware, that should you decide to use these services we will receive a referral fee. For full and detailed information please visit 'terms and conditions' on our website www.keithashton.co.uk

Brentwood
Tel. 01277 260858

Village Office
Tel. 01277 375757

Lettings Office
Tel. 01277 202200

Explore more @ www.keithashton.co.uk

