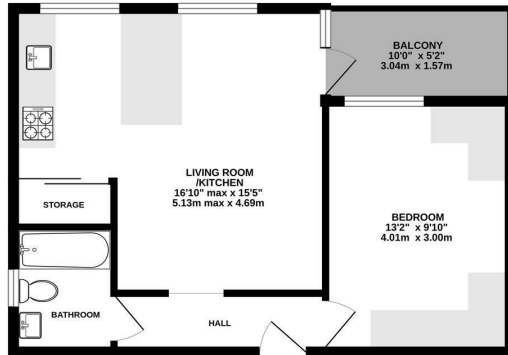




Keith
Ashton

Gordon Road, Shenfield
Brentwood

SECOND FLOOR
448 sq.ft. (41.6 sq.m.) approx.



TOTAL FLOOR AREA: 448 sq.ft. (41.6 sq.m.) approx.
Measurements are approximate. Not to scale. Illustrative purposes only.
Made with MyHomeSpace



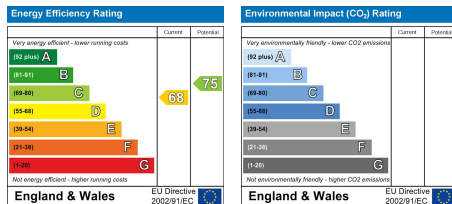
7 Chulmleigh Court Gordon Road, Shenfield, Brentwood, CM15 8LS

****Guide Price £250,000 - £260,000**** We are thrilled to present this beautifully maintained one-bedroom apartment, perfectly situated within easy reach of Shenfield High Street and the mainline railway station.

The property welcomes you with an inviting hallway, leading to a bright and airy open-plan kitchen and living area. The kitchen is tastefully designed with elegant shaker-style units and features a practical breakfast bar, ideal for casual dining or entertaining. From the living area, a doorway opens onto a private balcony, offering a comfortable outdoor space to relax and unwind. The generously sized double bedroom offers plenty of wardrobe space and completing the interior is a sleek, modern bathroom, fully tiled for a stylish and contemporary finish.

Additional benefits include ample off street parking space and the apartment's prime location, making it an excellent choice for first-time buyers or commuters seeking convenient access to Shenfield's train station and vibrant high street.

Guide Price £250,000



SERVICES:

Local Authority: Brentwood
Council tax band: C
Post code: CM15 8LS

VIEWING:

Strictly by prior arrangement with Keith Ashton Estate Agents

OPENING HOURS:

Monday to Friday: 8.45AM - 6.30PM | Saturdays: 9AM - 5.30PM | Sundays: 10AM - 2PM

MORTGAGE INFORMATION:

We offer the additional facility of an in-house Independent Financial Adviser who will access all mortgage lenders with the purpose of providing you with the benefit of choice. For quotations or comparables please call 01277 260858 or visit our interactive website at www.mortgagebusiness.net



We the Agent have not tested any apparatus, fittings or services for this property. The plot size is intended merely as a guide and has not been officially measured or verified by the Agent. Photographs are for illustration only and may depict items which are not for sale or included in the sale of the property. As part of the service we offer we may recommend ancillary services to you which we believe may help you with your property transaction. We wish to make you aware, that should you decide to use these services we will receive a referral fee. For full and detailed information please visit 'terms and conditions' on our website www.keithashton.co.uk

Brentwood
Tel. 01277 260858

Village Office
Tel. 01277 375757

Lettings Office
Tel. 01277 202200

Explore more @ www.keithashton.co.uk

