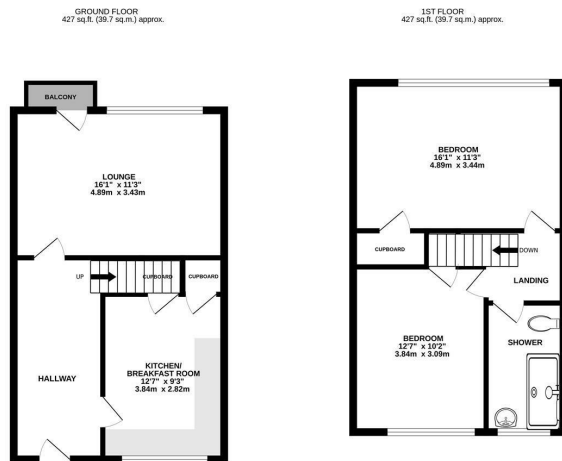


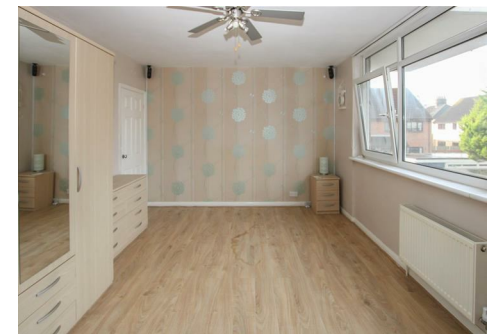


Keith
Ashton

Pompadour Close, Warley
Brentwood



TOTAL FLOOR AREA: 855 sq.ft. (79.6 sq.m.) approx.
Measurements are approximate. Not to scale. Illustrative positions only.
Made with Mapbox ©2022



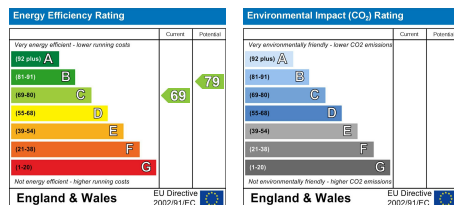
10 Pompadour Close, Warley, Brentwood, CM14 5LB

****Guide Price £250,000 - £275,000**** We bring to market this two-floor apartment, ideally situated within a short walk of Brentwood Mainline Railway Station and town centre.

The ground floor welcomes you with a spacious hallway, leading to a generously sized lounge that opens onto a private balcony. Adjacent is a bright kitchen fitted with wall and base units and offering ample space for white goods. Upstairs, the first-floor features two comfortable double bedrooms, complemented by a modern shower room.

With its convenient location and thoughtful layout, this apartment is an excellent choice for first-time buyers, commuters, or investors.

Guide Price £250,000



SERVICES:

Local Authority: Brentwood
Council tax band: C
Post code: CM14 5LB

VIEWING:

Strictly by prior arrangement with Keith Ashton Estate Agents

OPENING HOURS:

Monday to Friday: 8.45AM - 6.30PM | Saturdays: 9AM - 5.30PM | Sundays: 10AM - 2PM

MORTGAGE INFORMATION:

We offer the additional facility of an in-house Independent Financial Adviser who will access all mortgage lenders with the purpose of providing you with the benefit of choice. For quotations or comparables please call 01277 260858 or visit our interactive website at www.mortgagebusiness.net



We the Agent have not tested any apparatus, fittings or services for this property. The plot size is intended merely as a guide and has not been officially measured or verified by the Agent. Photographs are for illustration only and may depict items which are not for sale or included in the sale of the property. As part of the service we offer we may recommend ancillary services to you which we believe may help you with your property transaction. We wish to make you aware, that should you decide to use these services we will receive a referral fee. For full and detailed information please visit 'terms and conditions' on our website www.keithashton.co.uk

Brentwood
Tel. 01277 260858

Village Office
Tel. 01277 375757

Lettings Office
Tel. 01277 202200

Explore more @ www.keithashton.co.uk

