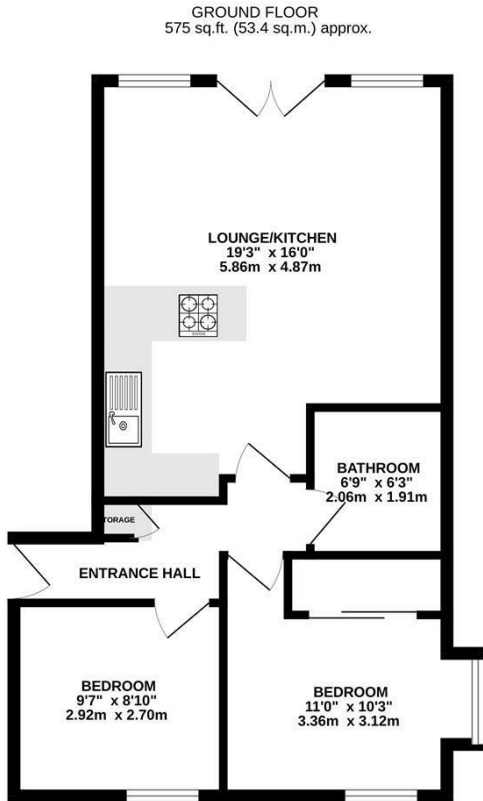




Keith  
Ashton

Chatham Way,  
Brentwood



TOTAL FLOOR AREA: 575 sq.ft. (53.4 sq.m.) approx.  
Measurements are approximate. Not to scale. Illustrative purposes only.  
Made with Metropix (2024)

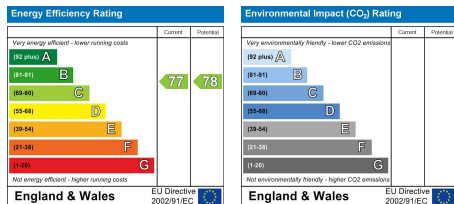


### Flat 4, The Square Chatham Way, Brentwood, CM14 4AL

**\*\*GUIDE PRICE £300,000 - £325,000\*\*** We are delighted to bring to market this bright and spacious two bedroom apartment which is very centrally located within close proximity to Brentwood's vibrant high street, with its great options for shopping and socialising. The mainline railway station is within a short walk and offers great transport links into London and beyond. The property is set on the ground floor of this attractive development and conveniently benefits from allocated car parking space, located directly below the property.

The internal accommodation includes a large, open-plan kitchen/lounge, with attractive wood style flooring. The kitchen itself comprises a range of above and below storage units, ample worktop space and various integrated appliances. There are two double bedrooms, with the principal bedroom featuring fitted wardrobes and dual aspect window overlooking the beautiful courtyard.

According to the current owner, there are in excess of 100 years remaining on the lease. The current combined ground rent and service charge is approximately £2,900 per year.



#### SERVICES:

Local Authority: Brentwood  
Council tax band: E  
Post code: CM14 4AL

#### VIEWING:

Strictly by prior arrangement with Keith Ashton Estate Agents

Guide Price £300,000-£325,000

#### OPENING HOURS:

Monday to Friday: 8.45AM - 6.30PM | Saturdays: 9AM - 5.30PM | Sundays: 10AM - 2PM

#### MORTGAGE INFORMATION:

We offer the additional facility of an in-house Independent Financial Adviser who will access all mortgage lenders with the purpose of providing you with the benefit of choice. For quotations or comparables please call 01277 260858 or visit our interactive website at [www.mortgagebusiness.net](http://www.mortgagebusiness.net)



We the Agent have not tested any apparatus, fittings or services for this property. The plot size is intended merely as a guide and has not been officially measured or verified by the Agent. Photographs are for illustration only and may depict items which are not for sale or included in the sale of the property. As part of the service we offer we may recommend ancillary services to you which we believe may help you with your property transaction. We wish to make you aware, that should you decide to use these services we will receive a referral fee. For full and detailed information please visit 'terms and conditions' on our website [www.keithashton.co.uk](http://www.keithashton.co.uk)

Brentwood  
Tel. 01277 260858

Village Office  
Tel. 01277 375757

Lettings Office  
Tel. 01277 202200

Explore more @ [www.keithashton.co.uk](http://www.keithashton.co.uk)

