



Keith
Ashton

7- 9 The Mount,
Brentwood



9 HENRY PLACE 7- 9 THE MOUNT

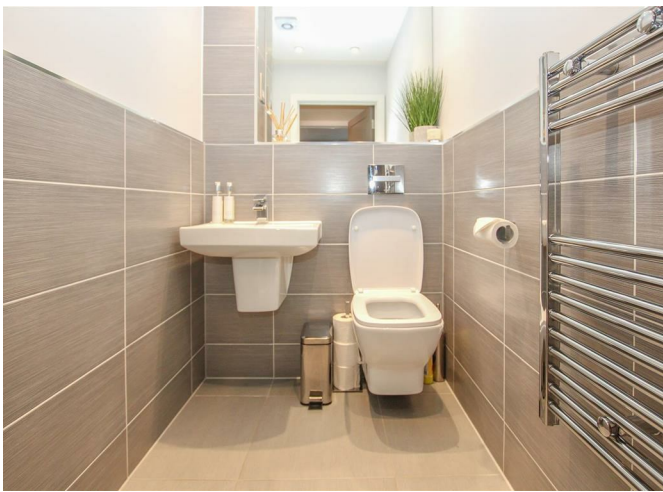
Brentwood, CM14 4QR

£410,000

We are delighted to offer for sale this superb two-bedroom duplex penthouse situated in a quiet residential area in the heart of the town, only 200 yards from Brentwood station, and just a short stroll from Brentwood's vibrant High Street.

Beautifully presented, this modern apartment boasts a fabulous open-plan living area, two en-suite bathrooms and two west-facing balconies with views towards the London skyline. Built to a superior standard, this beautifully designed apartment offers a blend of luxury and convenience. NO ONWARD CHAIN!

- Stunning duplex Penthouse
- Beautifully presented throughout
- Fabulous open plan living area
- Two west facing balconies
- Far reaching views towards City
- Two good-sized bedrooms
- Allocated parking
- Heart of Brentwood location



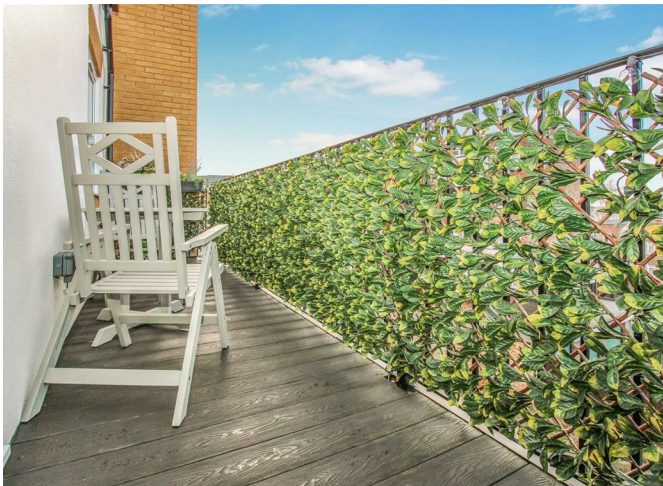
Description

A secure audiovisual entry phone system gives access to the communal area with stairs to all floors and access to underground parking. As you enter this beautifully presented penthouse you are greeted with a bright entrance hall with a handy storage cupboard, a utility store and stairs to the upper floor.

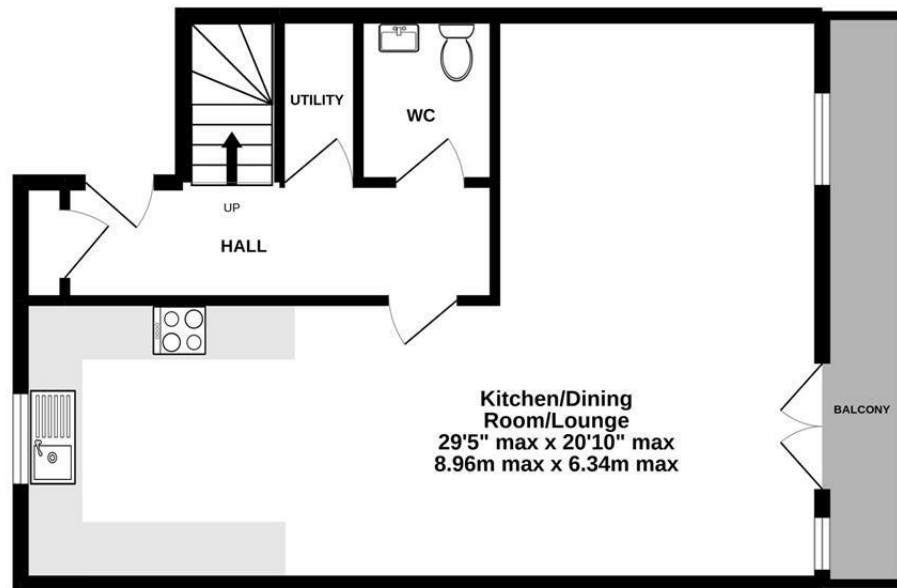
There is a stylish open-plan lounge/diner/kitchen area, with French doors opening onto the large west-facing balcony, which makes it perfect for alfresco dining with views towards the City. This spacious "L" shaped area measures 29'5 x 20'10 max and is beautifully presented, with plenty of natural light, giving it a very light and airy feel. The kitchen area is fitted with an excellent range of contemporary units, set in contrasting granite worktops. Integrated appliances include a built-in double oven, fridge/freezer and a wine cooler. An attractive cloakroom can also be found on this level.

Stairs take you to the landing and give access to the beautiful master bedroom with its own private west-facing balcony accessed via French doors and an en-suite bathroom which includes both a bath and a separate double shower unit. The well proportioned second bedroom benefits from plenty of built-in storage and a skylight. This also has its own en-suite shower room.

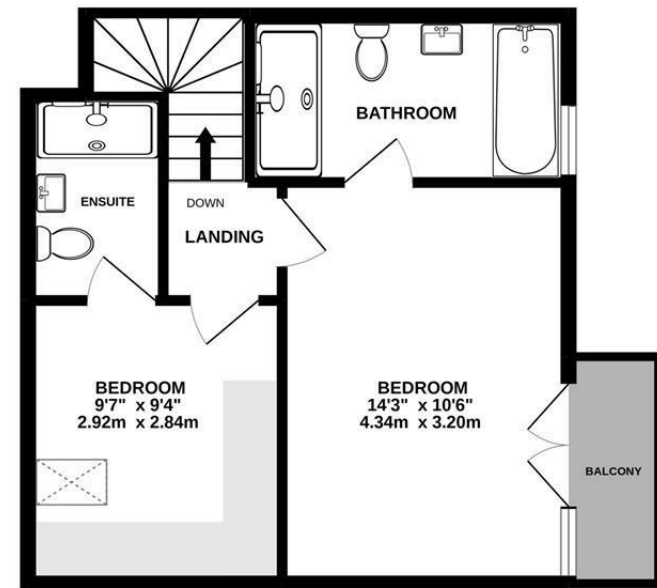
Outside is a communal decked courtyard area and allocated parking. With its convenient location and upmarket accommodation, we feel this will make an excellent home for the discerning purchaser.



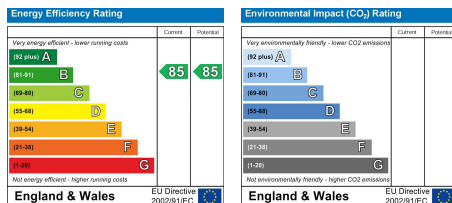
SECOND FLOOR
576 sq.ft. (53.5 sq.m.) approx.



TOP FLOOR
406 sq.ft. (37.8 sq.m.) approx.



TOTAL FLOOR AREA : 982 sq.ft. (91.3 sq.m.) approx.
Measurements are approximate. Not to scale. Illustrative purposes only
Made with Metropix ©2022



SERVICES:

Local Authority: Brentwood
Council tax band: E
Post code: CM14 4QR

VIEWING:

Strictly by prior arrangement with Keith Ashton Estate Agents

OPENING HOURS:

Monday to Friday: 8.45AM - 6.30PM | Saturdays: 9AM - 5.30PM | Sundays: 10AM - 2PM

MORTGAGE INFORMATION: We offer the additional facility of an in-house Independent Financial Adviser who will access all mortgage lenders with the purpose of providing you with the benefit of choice. For quotations or comparables please call 01277 260858 or visit our interactive website at www.mortgagebusiness.net



We the Agent have not tested any apparatus, fittings or services for this property. The plot size is intended merely as a guide and has not been officially measured or verified by the Agent. Photographs are for illustration only and may depict items which are not for sale or included in the sale of the property. As part of the service we offer we may recommend ancillary services to you which we believe may help you with your property transaction. We wish to make you aware, that should you decide to use these services we will receive a referral fee. For full and detailed information please visit 'terms and conditions' on our website www.keithashton.co.uk

Brentwood
Tel. 01277 260858

Village Office
Tel. 01277 375757

Lettings Office
Tel: 01277 202200

Explore more @ www.keithashton.co.uk

