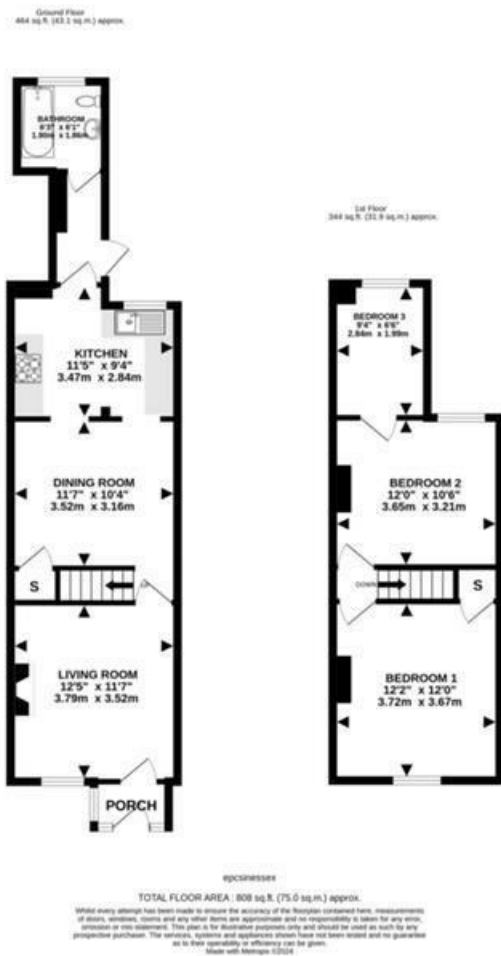




Keith  
Ashton

Cromwell Road, Warley  
Brentwood



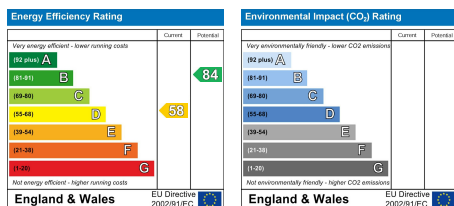


19 Cromwell Road, Warley, Brentwood, CM14 5DT

**\*\* GUIDE RANGE £375,000 - £400,000 \*\* NO ONWARD CHAIN** - This charming two/three bed cottage boasts a welcoming porch that leads to the cosy living room with a fireplace to centre, a dining room through to the well equipped kitchen and a family bathroom. To the first floor there are 3 bedrooms, two of which are double rooms and a third single. Requiring some modernisation throughout, this property presents a fantastic opportunity to add a personal touch and with the excellent size plot, it offers plenty of scope to extend, subject to planning permission. Externally the property offers off road parking to the front and a sizable garden to the rear.

This property is located within close proximity of Brentwood main line station with its excellent links to London Liverpool Street. There is also a local children's nursery within close proximity as well as Holly Trees primary school (subject to acceptance) which is located within 0.3 miles.

Guide Price £375,000



#### SERVICES:

Local Authority: Brentwood  
Council tax band: D  
Post code: CM14 5DT

#### VIEWING:

Strictly by prior arrangement with Keith Ashton Estate Agents

#### OPENING HOURS:

Monday to Friday: 8.45AM - 6.30PM | Saturdays: 9AM - 5.30PM | Sundays: 10AM - 2PM

#### MORTGAGE INFORMATION:

We offer the additional facility of an in-house Independent Financial Adviser who will access all mortgage lenders with the purpose of providing you with the benefit of choice. For quotations or comparables please call 01277 260858 or visit our interactive website at [www.mortgagebusiness.net](http://www.mortgagebusiness.net)



We the Agent have not tested any apparatus, fittings or services for this property. The plot size is intended merely as a guide and has not been officially measured or verified by the Agent. Photographs are for illustration only and may depict items which are not for sale or included in the sale of the property. As part of the service we offer we may recommend ancillary services to you which we believe may help you with your property transaction. We wish to make you aware, that should you decide to use these services we will receive a referral fee. For full and detailed information please visit 'terms and conditions' on our website [www.keithashton.co.uk](http://www.keithashton.co.uk)

Brentwood  
Tel. 01277 260858

Village Office  
Tel. 01277 375757

Lettings Office  
Tel. 01277 202200

Explore more @ [www.keithashton.co.uk](http://www.keithashton.co.uk)

