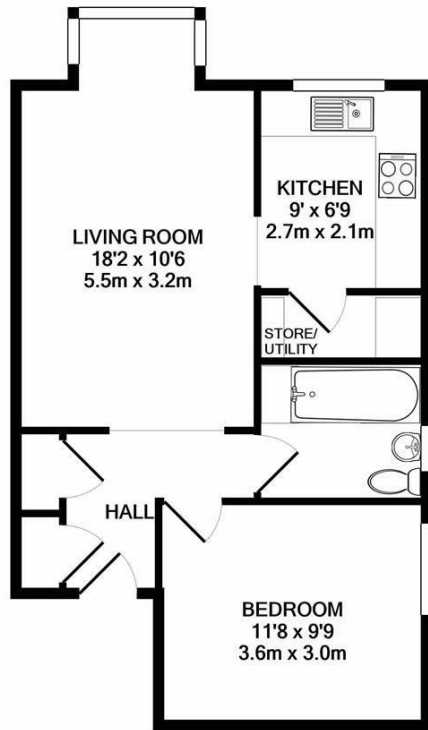




**Keith
Ashton**

Crescent Road, Warley
Brentwood



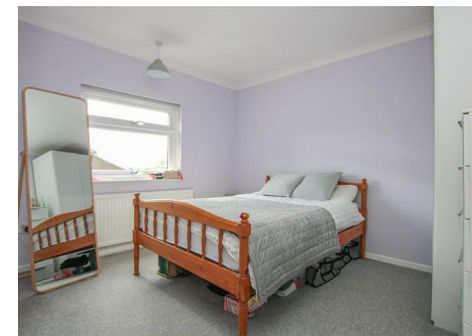
TOTAL APPROX. FLOOR AREA 479 SQ.FT. (44.5 SQ.M.)

Whilst every attempt has been made to ensure the accuracy of the floor plan contained here, measurements of doors, windows, rooms and any other items are approximate and no responsibility is taken for any error, omission, or mis-statement. This plan is for illustrative purposes only and should be used as such by any prospective purchaser. The services, systems and appliances shown have not been tested and no guarantee as to their operability or efficiency can be given
Made with Metropix ©2019



5 Wheatfields Crescent Road, Warley, Brentwood, CM14 5JU

Nestled in the charming Crescent Road of Warley, Brentwood, this delightful apartment offers a perfect blend of comfort and style. As you step inside, you are greeted by a spacious and luminous living room, with space for a dining table and chairs. There is a generously sized double bedroom giving views of the green space. The bathroom is well-appointed and offers convenience and functionality. The property boasts ample storage space, ensuring a clutter-free environment. Externally, there is parking at the rear of the property, where you can rent a space via Brentwood Council. This property is within walking distance of Brentwood Railway Station and local shops.



Guide Price £230,000

SERVICES:

Local Authority: Brentwood
Council tax band: C
Post code: CM14 5JU

VIEWING:

Strictly by prior arrangement with Keith Ashton Estate Agents

OPENING HOURS:

Monday to Friday: 8.45AM - 6.30PM | Saturdays: 9AM - 5.30PM | Sundays: 10AM - 2PM

MORTGAGE INFORMATION: We offer the additional facility of an in-house Independent Financial Adviser who will access all mortgage lenders with the purpose of providing you with the benefit of choice. For quotations or comparables please call 01277 260858 or visit our interactive website at www.mortgagebusiness.net

Energy Efficiency Rating		Environmental Impact (CO ₂) Rating	
Current	Potential	Current	Potential
73	73		



We the Agent have not tested any apparatus, fittings or services for this property. The plot size is intended merely as a guide and has not been officially measured or verified by the Agent. Photographs are for illustration only and may depict items which are not for sale or included in the sale of the property. As part of the service we offer we may recommend ancillary services to you which we believe may help you with your property transaction. We wish to make you aware, that should you decide to use these services we will receive a referral fee. For full and detailed information please visit 'terms and conditions' on our website www.keithashton.co.uk

Brentwood
Tel. 01277 260858

Village Office
Tel. 01277 375757

Lettings Office
Tel. 01277 202200

Explore more @ www.keithashton.co.uk

