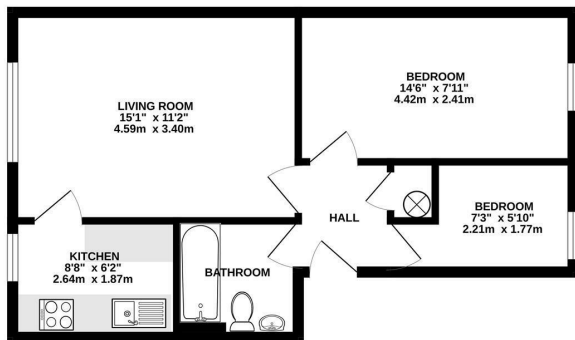




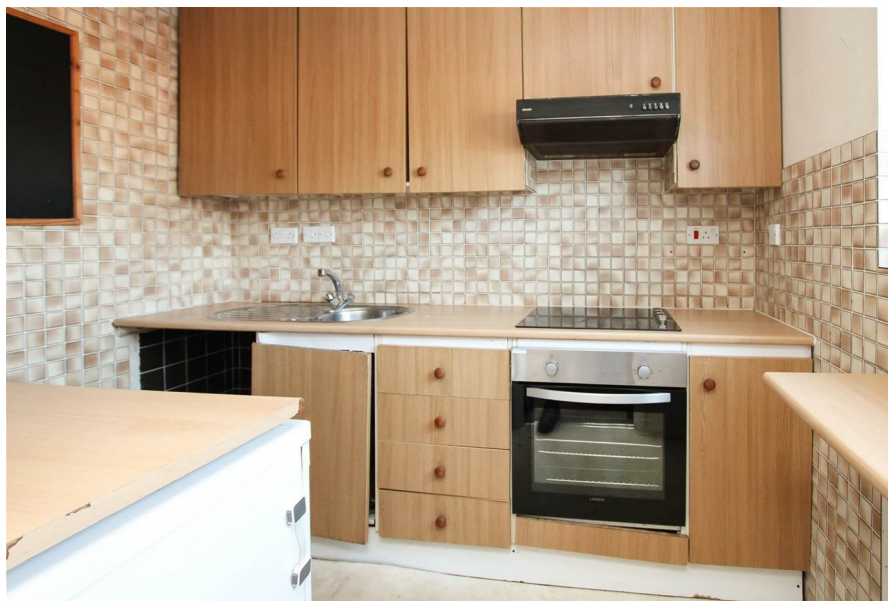
Keith
Ashton

Gresham Road,
Brentwood

SECOND FLOOR
455 sq.ft. (42.3 sq.m.) approx.



TOTAL FLOOR AREA - 455 sq.ft. (42.3 sq.m.) approx.
Measurements are approximate. Not to scale. No liability accepted only.
Made with Metaphor (2022)



34 Gresham Court Gresham Road, Brentwood, CM14 4HW

NO ONWARD CHAIN! Situated in a prime location within a short walk of Brentwood Train Station offering fast links to London via the Elizabeth Line this well presented, two bedroom top floor apartment. Set in Central Brentwood this is ideally within close proximity of Brentwood High Street with its array of shops, bars and restaurants. The internal accommodation comprises entrance hall, large lounge/diner, fitted kitchen, two bedrooms, white bathroom suite and also benefits from its own personal garage. We feel that this property would be ideal for either a first time buyer or a great investment opportunity and would highly recommend an early viewing to appreciate what is on offer.

Guide Price £230,000



Energy Efficiency Rating		Environmental Impact (CO ₂) Rating	
Current	Potential	Current	Potential
73	79	A	A
<p>Very energy efficient - lower running costs</p> <p>(82 plus) A</p> <p>(61-81) B</p> <p>(49-60) C</p> <p>(35-48) D</p> <p>(22-44) E</p> <p>(9-28) F</p> <p>(1-8) G</p> <p>Not energy efficient - higher running costs</p>		<p>Very environmentally friendly - lower CO₂ emissions</p> <p>(82 plus) A</p> <p>(61-81) B</p> <p>(49-60) C</p> <p>(35-48) D</p> <p>(22-44) E</p> <p>(9-28) F</p> <p>(1-8) G</p> <p>Not environmentally friendly - higher CO₂ emissions</p>	
<p>England & Wales EU Directive 2002/91/EC</p>		<p>England & Wales EU Directive 2002/91/EC</p>	

SERVICES:

Local Authority: Brentwood
Council tax band: C
Post code: CM14 4HW

VIEWING:

Strictly by prior arrangement with Keith Ashton Estate Agents

OPENING HOURS:

Monday to Friday: 8.45AM - 6.30PM | Saturdays: 9AM - 5.30PM | Sundays: 10AM - 2PM

MORTGAGE INFORMATION:

We offer the additional facility of an in-house Independent Financial Adviser who will access all mortgage lenders with the purpose of providing you with the benefit of choice. For quotations or comparables please call 01277 260858 or visit our interactive website at www.mortgagebusiness.net



We the Agent have not tested any apparatus, fittings or services for this property. The plot size is intended merely as a guide and has not been officially measured or verified by the Agent. Photographs are for illustration only and may depict items which are not for sale or included in the sale of the property. As part of the service we offer we may recommend ancillary services to you which we believe may help you with your property transaction. We wish to make you aware, that should you decide to use these services we will receive a referral fee. For full and detailed information please visit 'terms and conditions' on our website www.keithashton.co.uk

Brentwood
Tel. 01277 260858

Village Office
Tel. 01277 375757

Lettings Office
Tel: 01277 202200

Explore more @ www.keithashton.co.uk

