

# 60

West Drayton  
Park Avenue  
West Drayton  
Middlesex  
UB7 7QB

---

**RWHITLEY**  
Est. 1938 & CO

Guide Price £775,000



- Extended 1930's Bay-Fronted Semi-Detached House
- Four Bedrooms
- Sought After & Highly Desirable Road
- Drawing Room with Bay Window
- Spacious Living Room
- Conservatory
- Fitted Kitchen with Granite Worksurfaces
- Dining Room
- Driveway
- Stunning Rear Garden

DESCRIPTION

Prepare to be impressed by this home's characterful 1930's bay fronted façade, typical of a property of its era. This extended four bedroom semi-detached house sits on a generous plot and is located on the highly sought after 'West Drayton Park Avenue' which is arguably one of the finest roads in West Drayton and within the 'Conservation Area'. Inside, the property boasts family comfort with its easy flowing layout and well proportioned rooms. To the ground floor there is an entrance lobby with useful coats cupboard, hallway with downstairs WC off, drawing room with bay window flooding the room with natural light, spacious living room,

conservatory with double doors out to the rear garden, kitchen fitted with a comprehensive range of stylish wall and floor cupboard units with granite worksurfaces and a dining room with door out to the rear garden. Stairs from the hallway lead to the first floor landing where you will find a principal bedroom with bay window and fitted wardrobes, second double bedroom with fitted wardrobes and views over the rear garden, two further bedrooms and a luxury family bathroom.

OUTSIDE

Front: A dropped kerb provides access via a wide opening to a block paved driveway, extending down the side of the property to a garage. Area of lawn with planting border and established shrubs.  
Rear: Patio area with the balance mainly laid to lawn with established planting borders.

LOCATION

The town centre of West Drayton with mainline railway station and Elizabeth Line, bus routes, The Closes Park and The Green are all within a short walk. London Heathrow Airport, Hillingdon Hospital, Schools, the motorway network, Stockley Business Park and Uxbridge town centre are all conveniently nearby.

COUNCIL TAX BAND

We understand that the current council tax band is F.

WINDOWS

Mainly double glazed.

HEATING & HOT WATER

A gas fired boiler serves the radiator system and hot water cylinder.

SERVICES

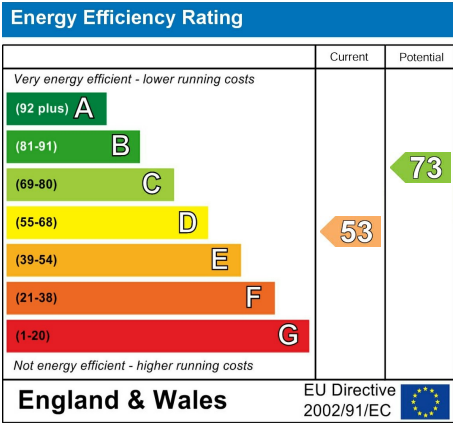
Mains gas, electricity, water and drainage.

TENURE

Freehold.

VIEWINGS

Strictly by appointment with R Whitley & Co.











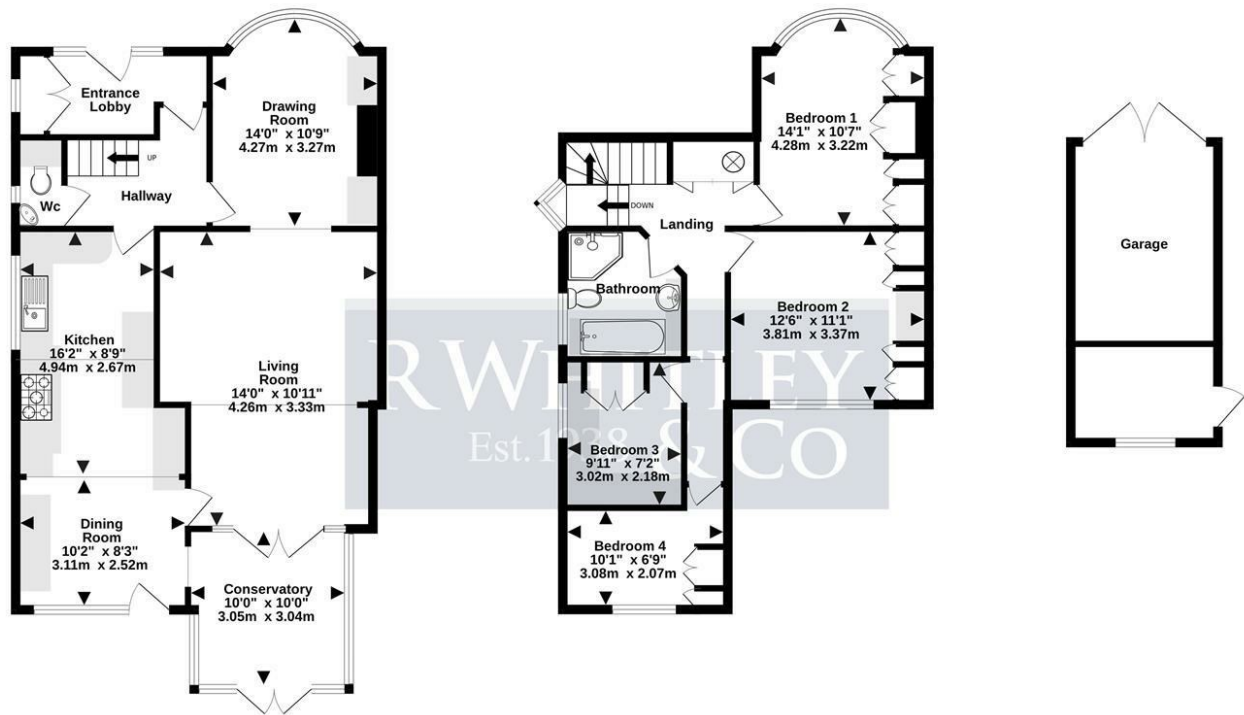




GROUND FLOOR  
899 sq ft (82.1 sq.m.) approx.

FIRST FLOOR  
580 sq ft (53.8 sq.m.) approx.

GARAGE



TOTAL FLOOR AREA EXCLUDES GARAGE

TOTAL FLOOR AREA : 1409sq.ft. (130.9 sq.m.) approx.

Whilst every attempt has been made to ensure the accuracy of the floorplan contained here, measurements of doors, windows, rooms and any other items are approximate and no responsibility is taken for any error, omission or mis-statement. This plan is for illustrative purposes only and should be used as such by any prospective purchaser. The services, systems and appliances shown have not been tested and no guarantee as to their operability or efficiency can be given.

Made with Metropix ©2025

# RWHITLEY

Est. 1938 & CO

Every care has been taken with the preparation of these brochures, but they are for general guidance only and complete accuracy cannot be guaranteed. If there is any point which is of particular importance, please ask us for verification or seek professional verification. This brochure does not constitute any part of a contract. All measurements are approximate. Fixtures, fittings and appliances have not been tested. Photographs are reproduced for general information and it cannot be inferred that any item shown is included in the sale. Drawings, sketches and floor plans are for general guidance only and are not to scale.

Estate House, 40 Station Road, West Drayton, Middlesex, UB7 7DA  
**sales@rwhitley.co.uk | 01895 422711 | rwhitley.co.uk**

