



## 297B Green Lanes, London, N13 4XS

£1,650 PCM Part furnished

- Flat above shop • Near Palmers Green Station • 3 Bedrooms • Gas central heating • Double glazing

An opportunity to rent a part furnished three bedroom flat situated two minutes walk from Palmers Green railway station with direct access to Old Street and Moorgate. The self-contained accommodation comprises of a kitchen, shower room, three bedrooms and living area. Other benefits include gas central heating and double glazing. The A406 is within easy motoring distance with connections to the North Circular. Based on the rent of £1,650pcm, a deposit of £1,903 will be required (equivalent of five weeks rent). Council tax band C. Available immediately on a 12 month tenancy.



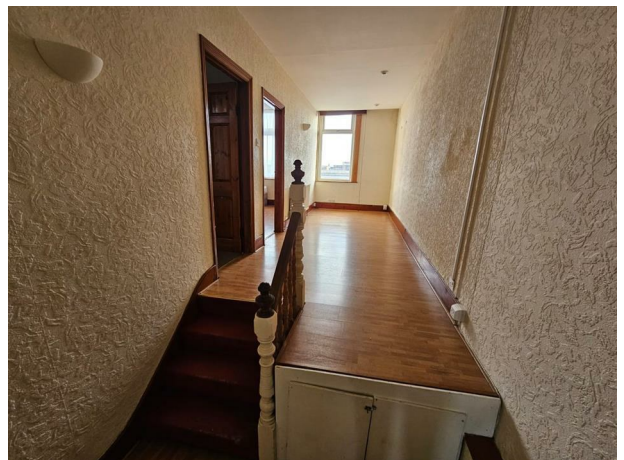
SCAN TO APPLY  
[www.rwhitley.co.uk/tenancy-application/](http://www.rwhitley.co.uk/tenancy-application/)

Energy Efficiency Rating		
	Current	Potential
Very energy efficient - lower running costs		
(92 plus) <b>A</b>		
(81-91) <b>B</b>		
(69-80) <b>C</b>		
(55-68) <b>D</b>		
(39-54) <b>E</b>		
(21-38) <b>F</b>		
(1-20) <b>G</b>		
Not energy efficient - higher running costs		
<b>England &amp; Wales</b>	71	79
EU Directive 2002/91/EC		

297B Green Lanes, N13 4XS

£1,650 PCM

RWHITLEY  
Est. 1938 & CO



For clarification we wish to inform prospective tenants that we have prepared these particulars as a general guide only. No responsibility is taken for any errors, omissions or mis-statements. The property may be left furnished, part furnished or unfurnished and it should not be assumed that the furnishings, floor coverings (including fitted carpets), curtains, blinds and other window dressings, furnishing (fitted or otherwise) and the white goods as seen at the time of viewing are to be included in the tenancy. These particulars do not constitute nor constitute any part of an offer or contract and are issued upon the understanding that all negotiations are conducted through R Whitley & Co.



01895 424056  
[lettings@rwhitley.co.uk](mailto:lettings@rwhitley.co.uk)  
Estate House, 40 Station Road, West Drayton, Middlesex, UB7 7DA