



## 22 Zeus Court West Drayton Middlesex UB7 8FD

£1,400 Per Calendar Month Part furnished

- Close to Elizabeth Line/West Drayton Railway Station
- 2nd floor apartment
- Gas central heating
- One double bedroom
- Underground allocated parking space
- Lift access
- Double glazing



SCAN TO APPLY

This second floor one bedroom apartment is perfectly positioned for the town centre and is just a short walk from the Elizabeth Line/Mainline Railway Station. The well presented accommodation comprises an entrance hall with two useful storage cupboards, a good sized living room which is open plan to the kitchen, generous double bedroom with french doors to private balcony and a bathroom with modern white suite with extensive tiling & shower over bath. The property has gas central heating and double glazing. The flat is served by a lift with video entry phone and terrace communal garden. One allocated underground car parking space. Your early inspection is recommended. Council tax band C. Based on the rent of £1,400 a deposit of £1,615 will be required (equivalent of five weeks rent). Available from 6th August 2024 on a 12 month tenancy.

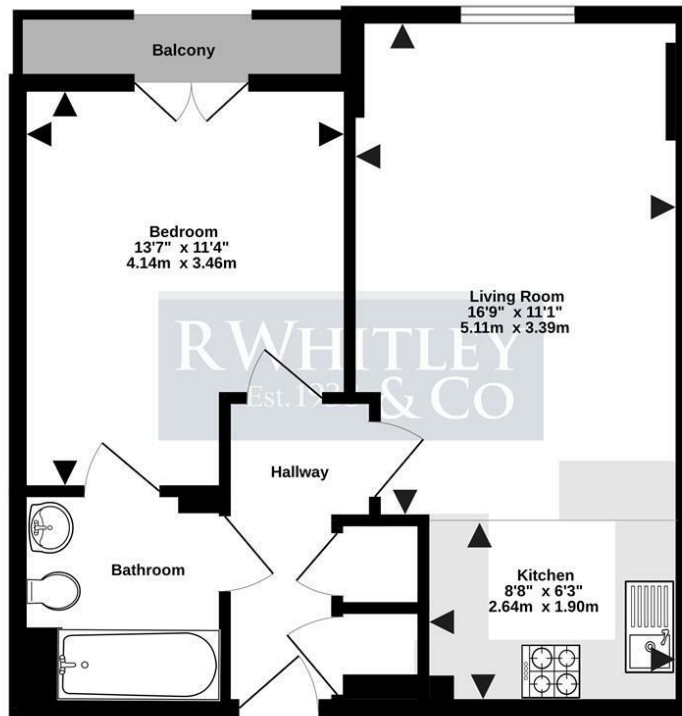
Energy Efficiency Rating		
	Current	Potential
Very energy efficient - lower running costs		
(92 plus) <b>A</b>		
(81-91) <b>B</b>	<b>82</b>	<b>82</b>
(69-80) <b>C</b>		
(55-68) <b>D</b>		
(39-54) <b>E</b>		
(21-38) <b>F</b>		
(1-20) <b>G</b>		
Not energy efficient - higher running costs		
<b>England &amp; Wales</b>	EU Directive 2002/91/EC	

22 Zeus Court UB7 8FD

£1,400 Per Calendar Month

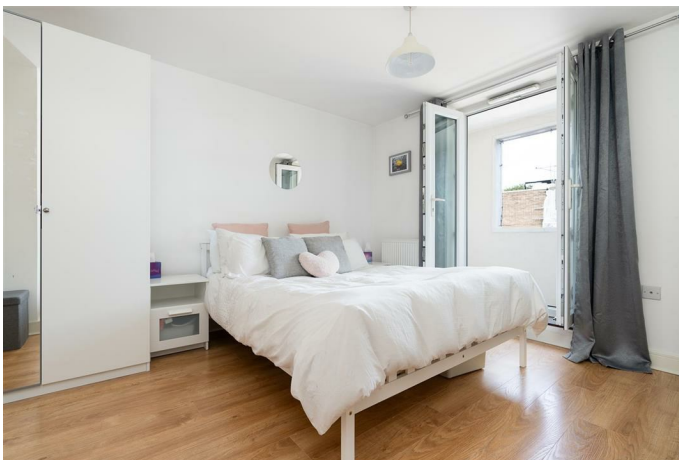
**RWHITLEY**  
Est. 1938 & CO

SECOND FLOOR  
476 sq.ft. (44.2 sq.m.) approx.



TOTAL FLOOR AREA: 476 sq.ft. (44.2 sq.m.) approx.

Whilst every attempt has been made to ensure the accuracy of the floorplan contained here, measurements of doors, windows, rooms and any other items are approximate and no responsibility is taken for any error, omission or mis-statement. This plan is for illustrative purposes only and should be used as such by any prospective purchaser. The services, systems and appliances shown have not been tested and no guarantee as to their operability or efficiency can be given.  
Made with Metropix ©2023



For clarification we wish to inform prospective tenants that we have prepared these particulars as a general guide only. No responsibility is taken for any errors, omissions or mis-statements. The property may be left furnished, part furnished or unfurnished and it should not be assumed that the furnishings, floor coverings (including fitted carpets), curtains, blinds and other window dressings, furnishing (fitted or otherwise) and the white goods as seen at the time of viewing are to be included in the tenancy. These particulars do not constitute nor constitute any part of an offer or contract and are issued upon the understanding that all negotiations are conducted through R Whitley & Co.



01895 424056

lettings@rwhitley.co.uk

Estate House, 40 Station Road, West Drayton, Middlesex, UB7 7DA